



*12th Annual Production Sale*  
**Feb. 20<sup>th</sup> 2021**  
At the Ranch, Turtle Lake, ND • 2 p.m. CST



[www.DoubleTSimmentals.com](http://www.DoubleTSimmentals.com)





*Welcome* It is with great pleasure that we welcome you to our 12th Annual production sale. We are very thankful and honored that you have displayed interest in our program. We are truly excited to present this year's set of bulls to you. I know this have been said over and over, but this is our strongest, deepest, and most powerful set of bulls we have ever offered. When you see this set you will understand. We go beyond the norm in producing functional and practical seedstock to advance your herd.

As the industry moves into a new era of genomic data, we too have included more genomic data for your evaluation. We now have our entire cow herd, bulls, and heifers genetically tested and parent verified. As last year, all bulls in the sale have been DNA profiled to provide Genomic Enhanced EPD's. With the dams and all the bull calves being tested this will increase the overall accuracy of the Bulls. With this increase in overall accuracy of young animals, this in turn will reduce some of the risk in making your bull selection. We work hard to offer as much information as possible to our customers, to make your decisions easier and more informed. All the bulls have also been tested for homo polled along with all black bulls tested for coat color. Black bulls will be indicated by a BB for homo black and BR for hetero black. Homo polled will be indicated by PP and hetero polled by HP. All the red bulls are diluter free. Which means, if used on black cows, no worries of producing a gray calf.

We pride ourselves on offering you all the information needed to make your bull selections. We will have ultrasound data, frame score and scrotal measurements on a supplement sheet provided sale day. If you would like to break down these numbers before sale day, please give us a call. We will have them available prior to the sale. We just do not have it all done prior going to print with the catalog.

We continue to breed cattle that will work for you and the entire industry. We want to raise cattle that are functional and profitable. The first order of business in any operation is to have a live calf. We have focused on cattle with calving ease and acceptable birth weights, while maintaining growth and performance for our commercial cattlemen.

Again, this year, we will be broadcasting the sale thru DV Auction service. With the continuation of COVID 19, if you are not comfortable attending sale day. We invite you to come walk through the bulls and females prior to the sale one on one. This will give you the opportunity to see them firsthand and on sale day bid over DV Auction in the comforts of your home. We will assist you any way we can to make it easier for you to purchase.

Simmental influenced cattle are more popular than any time before and sought after in every segment of the industry. Cattlemen across the country are looking to the Simmental breed to improve growth, maternal traits, and overall red meat yield. With the trend of increased carcass weights and demand for higher quality grading cattle, Simmentals have the traits to help you increase profit and demand.

Let us help you find a bull that will fit your program and needs to improve profit and functionality.

**Please join us on February 20th for Lunch at 11:30 with sale to follow at 2 PM.**

Thanks for your interest,

*Tim & Tam Clark • Michael & Jessie Martin  
Shane & Kayla Swanson*



# POWER & GROWTH

## Calving Ease



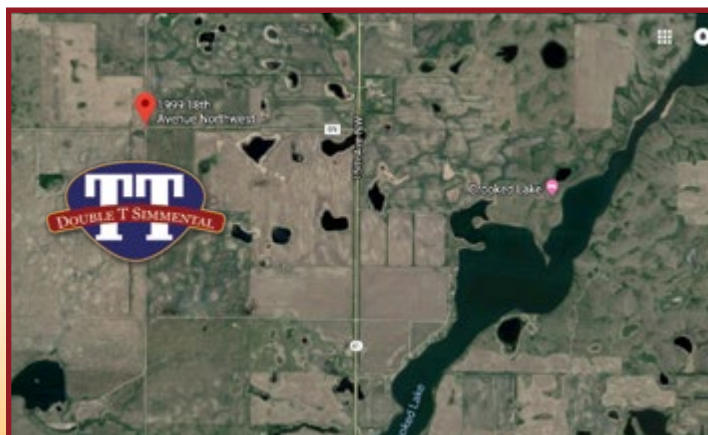
12th Annual Production Sale  
**Feb. 20<sup>th</sup> 2021**

At the Ranch, Turtle Lake, ND • 2 p.m. CST

*Selling* **45** Simmental & SimAngus™ Yearling Bulls  
**20 Open Heifers**  
*& The* **Elite 8** 4 Elite Breds  
 4 Elite Opens

This sale will be broadcast live on the internet.

**DVAuction**  
 Broadcasting Real-Time Auctions  
 Real time bidding & proxy bidding available.



### Maternal & Carcass Traits

*Physical Address:* 1999 18th St. NW Turtle Lake ND 58575  
 Complimentary Lunch will be served from 11:30 to 1:30

#### *Location:*

**At the Ranch** – 11 miles north of Turtle Lake on Hi-way 41 to county road 8N (note: do not take county road 8) then west 3 miles on county road 8N.  
**From Velva** – approximately 25 miles south on Hi-way 41 to county road 8N, 3 miles west on 8N.

#### *Accommodations:*

Scotwood Motel, Washburn, ND .....701-462-8191 (40 mins)  
 North Shore Inn, Garrison, ND.....701-463-7202 (30 mins)

#### *Contact information:*

Home .....701-448-2815  
 Tim Cell .....701-799-7752  
 Tam Cell .....701-315-0032

#### *Auctioneer:*

Mike Ostrem .....701-208-0164

#### *Sale Staff:*

Marty Ropp, Allied Genetic Resources .....406-581-7835  
 Tony Heins.....701-400-4435

*Farm Visits:* Bulls will be available to view at any time prior to sale day. For those who view prior to sale day, will receive a credit of \$100 on a purchase of a bull.

*Guarantee:* Bulls are guaranteed as breeders; if failing to be satisfactory, they must be reported to us by August 1. Our goal is for each customer to be satisfied; if not we will work with each individual to resolve any issues.

*Herd Health:* Calves were all vaccinated with 7 way, Bovishield Gold 5, and One Shot in the spring and fall. Bulls will receive 2 shots of Fusogard prior to delivery. Open Heifers will receive spring vaccination of Bovishield 5 VL5 prior to sale date. Bred females have been vaccinated with 2 shots of Scour Guard 4KC along with Virashield VL5 HB.

*Semen interest:* Double T will retain 1/3 semen interest on all bulls. Selling 2/3 semen interest and full possession.

*Wintering:* Bulls will be semen tested early April. When the bulls have completed breeding soundness exam we will begin delivering. Bulls being winter here will be charged a fee of \$180 per head at time of purchase; which includes feeding, semen testing, delivery and insurance for 6 months. Free delivery will be limited to 300 miles.

*Terms and conditions:* All cattle sell under terms and conditions of the American Simmental Association and will be available on request the day of sale.

*Risk:* Double T Simmentals will not be responsible for any lost or stolen items or liable for any personal injury.

# Black Bulls



## Reference Sire LRS ICONIC 303C

Sire: SITZ TRAVELER 8180 MGS: BON VIEW BANDO 598

CE	BW	WW	YW	MCE	ADG	YG	Marb.	REA	API	TI
18.1	-2.1	85.6	132.8	9.2	0.3	-0.11	0.62	0.7	163	94.1

New 1/2 blood bull we sampled. Used on heifers and cows with great success. Complete package bull from moderate birth to breed topping growth and carcass. Sires cattle with depth, muscle, and ideal rib shape.



LOT 1 • TT HERCULES 7032H



LOT 2 • TT HULK 871H

## Lot 1 TT HERCULES 7032H

BD	Color	%Sim	BW/Ratio	205/Ratio	P/S
2/12/20	BB	1/2 SM	95/109	855/111	PP

PA FULL POWER 1208  
LRS ICONIC 303C  
LRS MS TOPGRADE 303A  
TT HERCULES 7032H Reg #: 3769511  
TJ MAIN EVENT 503B  
ADV MS MAIN EVENT E7032  
TRPH MS CATALYST A384

EPDs	%
CE 12.2	50%
BW 1.7	75%
WW 110.6	1%
YW 175.2	1%
MCE 5.7	70%
Milk 24.9	30%
MWW 80.1	1%
YG -0.13	80%
Marb. 0.51	20%
REA 0.77	30%
API 158.3	10%
TI 102.7	1%

Where do we start with this one? This guy is a beast, indexed 111 on weaning weight. Ranks in the top 1 % for weaning weight, yearling weight, average daily gain, maternal weaning, and terminal index. That is only the beginning. Once you see this guy you will be amazed, he is as powerful as his numbers. Big massive structure, huge middle, and thick wide quarter. Hercules is the most fitting name for this guy.

## Lot 2 TT HULK 871H

BD	Color	%Sim	BW/Ratio	205/Ratio	P/S
2/10/20	BB	1/2 SM	80/95	791/103	PP

PA FULL POWER 1208  
LRS ICONIC 303C  
LRS MS TOPGRADE 303A  
TT HULK 871H Reg #: 3769471  
S A V FINAL ANSWER 0035  
TT MS ANSWER 871F  
TT MS BOZEMAN 671D

EPDs	%
CE 18.2	4%
BW 0.8	60%
WW 91	10%
YW 137	15%
MCE 10.2	10%
Milk 16.9	95%
MWW 62.4	35%
YG -0.11	85%
Marb. 0.52	15%
REA 0.65	50%
API 152.2	15%
TI 91.5	5%

Hulk is an elite pedigree packed bull, with Iconic on the top side. He is out of a Final Answer first calf heifer, going back to a Bozeman and High Roller. This homo black and polled bull is made right, he is smooth fronted with big volume and strong top. He will add power and pounds to your calf crops.





## LOT 4 • TT HITCHCOCK 831H

### Lot 3 TT HUBBARD 859H

BD	Color	%Sim	BW/Ratio	205/Ratio	P/S
2/14/20	BB	1/2 SM	77/92	797/104	PP

PA FULL POWER 1208  
LRS ICONIC 303C  
LRS MS TOPGRADE 303A

TT HUBBARD 859H Reg #:3769435  
MAR INNOVATION 251  
TT MS INNOVATION 859F  
TT DREAM GIRL 859T

TT Hubbard is homo polled and black. This set of Iconic sons will impress you all. They are all very functional and practical in their genetic package. Out of another first calf heifer. Hubbard would be a heifer bull candidate.

EPDs	%
CE	14.2 30%
BW	-0.7 30%
WW	84.4 20%
YW	126.8 25%
MCE	8.1 30%
Milk	17.6 90%
MWW	59.7 50%
YG	-0.19 65%
Marb.	0.41 30%
REA	0.75 35%
API	143.5 25%
TI	86.5 15%

### Lot 4 TT HITCHCOCK 831H

BD	Color	%Sim	BW/Ratio	205/Ratio	P/S
2/15/20	BB	1/2 SM	84/100	802/104	PP

PA FULL POWER 1208  
LRS ICONIC 303C  
LRS MS TOPGRADE 303A

TT HITCHCOCK 831H Reg #:3769463  
S A V BRUISER 9164  
TT MS BRUISER 831F  
TT MS DEXTER 231Z

TT Hitchcock is a ranch favorite that has performed well out of a heifer. His mother is a fantastic SAV Bruise daughter going back to Dexter. Look for him to add maternal superior females to your herd and profit to your steer crop.

EPDs	%
CE	13.4 35%
BW	1 65%
WW	88.3 10%
YW	135.3 15%
MCE	8.1 30%
Milk	18.5 85%
MWW	62.5 35%
YG	-0.23 50%
Marb.	0.39 35%
REA	0.83 20%
API	144.5 20%
TI	86.8 15%







## Reference Sire **HOOKS ADMIRAL 33A**

Sire: Sire Name MGS: Maternal Grand Sire name

CE	BW	WW	YW	MCE	ADG	YG	Marb.	REA	API	TI
9	1	89.6	136.9	9	0.3	-0.23	0.52	1.09	148.6	89.1

Hook's Admiral is a 1/2 blood that will add growth, muscle, an added marbling. A great maternal value. Profit leading genetics with added muscle and bone.



**LOT 5 • TT HIGH GRADE 672H**



**LOT 6 • TT HIGH END 434H**



**LOT 9 • TT HIGH PLAINS 201H**

## Lot **5** **TT HIGH GRADE 672H**

BD	Color	%Sim	BW/Ratio	205/Ratio	P/S
2/18/20	BB	1/2 SM	88/	879/	PP

GAR-EGL PROTEGE

HOOKS ADMIRAL 33A

HOOKS PATTI 3P

TT HIGH GRADE 672H Reg #3769578

SA V FINAL ANSWER 0035

BTS MS ANSWER 201Z

BTS MS DEX 025X

EPDs	%
CE	9.8 80%
BW	1.8 80%
WW	90.5 10%
YW	134.6 15%
MCE	7.3 45%
Milk	21.2 65%
MWW	66.4 20%
YG	-0.1 85%
Marb.	0.43 30%
REA	0.7 45%
API	147.1 20%
TI	87 15%

Lots 5 -9 - All full brothers to last year's high selling bull. This set of Admiral sons are truly impressive, out of our Final Answer daughter - 201Z, who continues to produce great one's year after year. These efficient well-designed bulls will add value and profit your calves. Package them together to add more consistency to your herd.

## Lot **6** **TT HIGH END 434H**

ASA#	BD	Color	%Sim	BW/Ratio	205/Ratio	P/S						
3769577	2/18/20	BB	1/2 SM	88/	755/	PP						
EPDs	CE	BW	WW	YW	MCE	Milk	MWW	YG	Marb.	REA	API	TI
	9.9	-1.3	74.3	113.4	7.5	21.2	58.3	-0.12	0.37	0.61	144.9	79.5
%	80%	20%	50%	55%	40%	65%	60%	80%	35%	60%	20%	40%

## Lot **7** **TT HIGH QUALITY 4H**

ASA#	BD	Color	%Sim	BW/Ratio	205/Ratio	P/S						
3769571	2/14/20	BB	1/2 SM	76/	736/	PP						
% EPDs	CE	BW	WW	YW	MCE	Milk	MWW	YG	Marb.	REA	API	TI
	10	1.8	92	138.7	7.5	21.2	67.2	-0.21	0.49	0.89	148.3	90
	80%	80%	5%	10%	40%	65%	15%	55%	20%	15%	15%	10%

## Lot **8** **TT HUEY 558H**

ASA#	BD	Color	%Sim	BW/Ratio	205/Ratio	P/S						
3769549	2/24/20	BB	1/2 SM	110/	802/	PP						
EPDS	CE	BW	WW	YW	MCE	Milk	MWW	YG	Marb.	REA	API	TI
	3.5	5.8	113.5	174.9	3.4	21.2	77.9	-0.14	0.43	0.92	136.4	95.4
%	99%	99%	1%	1%	95%	65%	1%	75%	30%	10%	35%	2%

## Lot **9** **TT HIGH PLAINS 201H**

ASA#	BD	Color	%Sim	BW/Ratio	205/Ratio	P/S						
3769512	2/7/20	BB	1/2 SM	89/99	835/109	PP						
EPDS	CE	BW	WW	YW	MCE	Milk	MWW	YG	Marb.	REA	API	TI
10.7	1.1	94.1	142.8	8.2	21.2	68.2	-0.09	0.35	0.67	142.9	88.2	
%	70%	65%	3%	10%	30%	65%	15%	90%	40%	50%	25%	10%





### Reference Sire **WS PROCLAMATION E202**

Sire: Sire Name MGS: Maternal Grand Sire name

CE	BW	WW	YW	MCE	ADG	YG	Marb.	REA	API	TI
13.7	0	99.5	148.2	9.1	0.3	-0.27	0.56	0.96	165.8	103.9

Eye-appealing progeny exhibit tremendous performance, extra body mass, natural muscle plus great feet and legs. His daughters are attractive-fronted females with excellent volume and are destined to make awesome cows. Use him with confidence to improve EPD profiles, structural correctness, performance, body mass, eye appeal and marketability.



## LOT 12 • TT HEAVY LOAD 657H

### Lot **10** TT HEAVY DUTY 412H

BD	Color	%Sim	BW/Ratio	205/Ratio	P/S
2/24/20	BB	3/4 SM	87/	717/	PP

CCR COWBOY CUT 5048Z

WS PROCLAMATION E202

WS MISS SUGAR C4

TT HEAVY DUTY 412H Reg #3769429

GAR PROGRESS

TT MS PROGRESS 421B

TT MS EIGHTBALL 221Z

EPDs	%
CE	16.7 10%
BW	-2 15%
WW	68.1 75%
YW	96.2 90%
MCE	10.7 5%
Milk	31.8 3%
MWW	65.8 20%
YG	-0.18 65%
Marb.	0.84 2%
REA	0.55 70%
API	170 2%
TI	90.2 10%

Lots 10 – 11 -12 are from an exciting flush of Proclamation and 421B Progress donor. Proclamation became a household name last year. This exciting new sire mated to 421B has been thrilling to watch through the year. These 3 full brothers are moderate frame, stout made, and thick muscled. They are power packed muscle makers.

### Lot **11** TT HEAVY HITTER 211H

ASA#	BD	Color	%Sim	BW/Ratio	205/Ratio	P/S						
3769483	2/25/20	BB	3/4 SM	87/	686/	PH						
EPDs	CE	BW	WW	YW	MCE	Milk	MWW	YG	Marb.	REA	API	TI
	13.9	0.4	77.2	110.9	9	31.8	70.3	-0.17	0.68	0.56	153.2	88.4
%	30%	50%	40%	60%	20%	3%	10%	70%	5%	70%	10%	10%

### Lot **12** TT HEAVY LOAD 657H

ASA#	BD			Color	%Sim	BW/Ratio		205/Ratio		P/S		
3769449	2/24/20			BB	3/4 SM	89/		698/		PP		
EPDs	CE	BW	WW	YW	MCE	Milk	MWW	YG	Marb.	REA	API	TI
	15.4	-1.8	72.2	97.5	10	31.8	67.8	-0.16	0.65	0.45	153.7	87.1
%	15%	15%	60%	85%	10%	3%	15%	70%	10%	85%	10%	15%



### LOT 13 • TT HEAVYWEIGHT 688H

#### Lot **13** TT HEAVYWEIGHT 688H

BD	Color	%Sim	BW/Ratio	205/Ratio	P/S
2/29/20	BB	PB SM	90/103	917/119	PP

CCR COWBOY CUT 5048Z

WS PROCLAMATION E202

WS MISS SUGAR C4

TT HEAVYWEIGHT 688H Reg #:3769557

WS EIGHT BALL W114

TT MS EIGHT BALL 688D

KSR BLACK BEAUTY

EPDs	%
CE	10.3 60%
BW	1.2 40%
WW	86.7 15%
YW	130.5 20%
MCE	6.7 35%
Milk	34.2 2%
MWW	77.5 2%
YG	-0.41 60%
Marb.	0.35 10%
REA	0.98 30%
API	145.8 15%
TI	90.2 10%

TT Heavyweight takes the honor of the heaviest weaning bull of 2020 at 917 with a ratio of 119. This homo polled and black Proclamation son will sire more pounds and performance for your calf crop. Tallies a weaning weight EPD of 86 and yearling weight of 130.

#### Lot **14** TT HOT TOPIC 301H

BD	Color	%Sim	BW/Ratio	205/Ratio	P/S
2/14/20	BB	PB SM	94/104	658/86	PH

CCR COWBOY CUT 5048Z

WS PROCLAMATION E202

WS MISS SUGAR C4

TT HOT TOPIC 301H Reg #:3769476

HOOKS SHEAR FORCE 38K

TT ABBY 301A

TT DIAMOND GIRL 913U

EPDs	%
CE	12.2 30%
BW	0.8 30%
WW	83.8 25%
YW	126.8 25%
MCE	7.2 25%
Milk	22.6 55%
MWW	64.5 35%
YG	-0.37 80%
Marb.	0.44 5%
REA	0.96 30%
API	160.7 4%
TI	90.3 10%

TT Hot Topic is a cool looking baldy out of Proclamation. If you are looking for some color, here he is. Out of a Shear Force female who has raised some impressive ones in the past. She is also the mother to Ms. PTO 910 one of the Elite 8 breds.



### LOT 14 • TT HOT TOPIC 301H





### Reference Sire **HOOK'S BLACK HAWK 50B**

Sire: Sire Name **MGS**: Maternal Grand Sire name

CE	BW	WW	YW	MCE	ADG	YG	Marb.	REA	API	TI
18.2	-3.2	87.2	134.8	10.9	0.3	-0.33	0.3	1.34	162.8	89.8

Hook's Black Hawk is a calving ease bull with the extra performance everyone is looking for. Black Hawk is the smooth sided, deep bodied, moderate sized, sound footed bull you might expect from his pedigree



**LOT 15 • TT HARD DRIVE 825H**



**LOT 16 • TT HARD ROCK 824H**

### Lot **15** **TT HARD DRIVE 825H**

BD	Color	%Sim	BW/Ratio	205/Ratio	P/S
2/26/20	BB	3/4 SM	88/104	865/112	PP

HOOK'S XAVIER 14X  
HOOK'S BLACK HAWK 50B  
HOOK'S YVETTE 100Y  
TT HARD DRIVE 825H Reg #:3769531  
HOOK'S BEACON 56B  
TT MS BEACON 825F  
TT MS PROPHET 525C

EPDs	%
CE 12.9	45%
BW -0.7	30%
WW 91.3	10%
YW 139	10%
MCE 8.4	25%
Milk 24.6	35%
MWW 70.2	10%
YG -0.28	35%
Marb. 0.36	40%
REA 1.15	2%
API 157.4	10%
TI 90.5	10%

Pay attention here. TT Hard Drive is a heifer bull prospect with a bit extra power. This Black Hawk son goes back to a Beacon daughter out of our Prophet donor female who had the featured flush last year. A full sib to his mother was one of the featured Elite 8 opens last year. Do not miss this power packed bull with a ton of potential.

### Lot **16** **TT HARD ROCK 824H**

BD	Color	%Sim	BW/Ratio	205/Ratio	P/S
2/16/20	BB	3/4 SM	71/86	775/101	PP

HOOK'S XAVIER 14X  
HOOK'S BLACK HAWK 50B  
HOOK'S YVETTE 100Y  
TT HARD ROCK 824H Reg #:3769493  
TT DYNAMIC 495D  
TT MS DYNAMIC 824F  
TT MS PROGRESS 421B

EPDs	%
CE 18.8	3%
BW -1.3	20%
WW 71.9	60%
YW 107.1	70%
MCE 11.3	3%
Milk 22.9	50%
MWW 58.8	55%
YG -0.29	35%
Marb. 0.37	35%
REA 0.86	20%
API 151.2	15%
TI 80.2	40%

This 3/4 blood Black Hawk is homo polled and black heifer bull prospect is a must see. An all around balanced numbered bull with power and stoutness. You will love this bull for his thickness, mass, and confirmation.

### Lot **17** **TT HIGH CALIBER 869H**

BD	Color	%Sim	BW/Ratio	205/Ratio	P/S
2/19/20	BB	3/4 SM	83/99	808/105	PP

HOOK'S XAVIER 14X  
HOOK'S BLACK HAWK 50B  
HOOK'S YVETTE 100Y  
TT HIGH CALIBER 869H Reg #:3769459  
HOOK'S BEACON 56B  
TT MS BEACON 869F  
KINNS MS ANSWER 669D

EPDs	%
CE 14.2	30%
BW -1.4	20%
WW 94.5	3%
YW 144.4	5%
MCE 9.6	15%
Milk 21.2	65%
MWW 68.4	15%
YG -0.33	20%
Marb. 0.44	25%
REA 1.37	1%
API 162.1	5%
TI 95.5	2%

Here is an interesting 3/4 blood Black Hawk son. He goes back to a Beacon and to a Final Answer daughter we purchased from Kinn's in the State Sale. Tallies a 14-calving ease EPD, with a negative BW and top 3% for weaning and yearling weight EPD's. Calving ease with that much power is not easy to find.

This sale will be broadcast live on the internet.

**DVAuction**  
Broadcasting Real-Time Auctions

Real time bidding & proxy bidding available.





### Reference Sire **SYDGEN ENHANCE**

Sire: Sire Name MGS: Maternal Grand Sire name

CE	BW	WW	YW	MCE	ADG	YG	Marb.	REA	API	TI
17.8	-2.5	85.4	152.2	10.7	0.42	0.24	1	0.57	164.8	95.9

SydGen Enhance combines elite calving ease, breed leading growth and superior carcass traits. The NUMBER 1 sire of progeny registered by the American Angus Association in 2020. This international favorite increases in popularity as his progeny continue to dominate sales.



## LOT 18 • TT HOOTIE 808H

### Lot **18** **TT HOOTIE 808H**

BD	Color	%Sim	BW/Ratio	205/Ratio	P/S
2/17/20	BB	1/2 SM	82/98	807/105	PP

SYDGEN EXCEED 3223

SYDGEN ENHANCE

SYDGEN RITA 2618

**TT HOOTIE 808H** Reg #:3769486

TT COOPER 36Z

TT MS COOPER 808F

BTS ON TRACK 108Y

EPDs	%
CE	15.2 20%
BW	0.6 55%
WW	86.7 15%
YW	147.2 4%
MCE	6.9 50%
Milk	26.5 20%
MWW	69.8 10%
YG	-0.12 80%
Marb.	0.46 25%
REA	0.76 30%
API	144.7 20%
TI	89.4 10%

Here is a heifer bull prospect with good performance. 807-pound adjusted weaning weight with 81-pound birth weight. He is homo polled and black going back to a Cooper daughter. If you are looking for an easy calving bull look at this guy.

### Lot **19** **TT HUMMER 888H**

BD	Color	%Sim	BW/Ratio	205/Ratio	P/S
2/17/20	BB	1/2 SM	87/103	771/100	PP

SYDGEN EXCEED 3223

SYDGEN ENHANCE

SYDGEN RITA 2618

**TT HUMMER 888H** Reg #:3769504

GW PTO 536D

TT MS PTO 888F

TT MS 388A

EPDs	%
CE	11.2 65%
BW	-0.6 30%
WW	73.2 55%
YW	127.4 25%
MCE	5.5 75%
Milk	23 50%
MWW	59.6 50%
YG	0.06 99%
Marb.	0.78 3%
REA	0.43 90%
API	162.1 5%
TI	89 10%

An Enhance 1/2 blood that displays the look of a heifer bull. His mother is a super first calf heifer out of PTO. She did a great job with her first calf with a near perfect udder. This guy will calf easy without sacrificing growth.





### Reference Sire **HOOK'S BEACON 56B**

Sire: Sire Name MGS: Maternal Grand Sire name

CE	BW	WW	YW	MCE	ADG	YG	Marb.	REA	API	TI
16.8	-3.5	79.8	121.7	11.8	0.26	-0.52	0.75	1.81	192.8	102.5

Generating high API cattle in a 6-frame package with added length, substance and muscle, Beacon is a true outlier in every sense of the word.

### Lot **20** **TT HECLA 829H**

BD	Color	%Sim	BW/Ratio	205/Ratio	P/S
2/20/20	BB	PB SM	81/98	814/106	PP

HOOKS SHEAR FORCE 38K  
 HOOK'S BEACON 56B  
 HOOKS ZAFIRAH 41Z  
**TT HECLA 829H** Reg #: 3769535  
 TJ MAIN EVENT 503B  
 TT MS EVENT 529F  
 TT MS BUBBA 529C

EPDs	%
CE	13.4 20%
BW	-0.7 15%
WW	85.1 20%
YW	132.9 15%
MCE	8.7 10%
Milk	29.8 10%
MWW	72.3 10%
YG	-0.36 85%
Marb.	0.37 10%
REA	1.19 5%
API	166.9 2%
TI	92.2 4%

A super made Beacon son out of a Main Event daughter. Top 2% for API at 167 and top 4% for TI at 92. This homo polled and black purebred rings the bell throughout his EPDs. Negative BW, 85 and 135 for WW and YW. He ranks in the top 20% or better in 16 traits.



### Reference Sire **MGR TREASURE**

Sire: Sire Name MGS: Maternal Grand Sire name

CE	BW	WW	YW	MCE	ADG	YG	Marb.	REA	API	TI
17.2	-3.6	86.6	153.1	15.9	0.42	0.24	1	0.13	166.5	97

A new Angus bull we sampled, to offer calving ease with moderate growth and excellent carcass traits. He did not disappoint.



### LOT 21 • **TT HIRED HAND 633H**

### Lot **21** **TT HIRED HAND 633H**

BD	Color	%Sim	BW/Ratio	205/Ratio	P/S
2/15/20	BB	1/2 SM	94/106	807/105	PP

V A R DISCOVERY 2240  
 MGR TREASURE  
 SJH IMPRESSION OF 6108 1614  
**TT HIRED HAND 633H** Reg #: 3769528  
 TT COOPER 36Z  
 TT MS COOPER 633D  
 TT MS SUBSTANCE 433B

EPDs	%
CE	15.5 15%
BW	-1.1 25%
WW	83.6 20%
YW	142.8 10%
MCE	11.3 3%
Milk	17.9 90%
MWW	59.7 50%
YG	0.05 99%
Marb.	0.77 3%
REA	0.14 99%
API	158.1 10%
TI	93.8 3%

Another 1/2 blood heifer bull prospect out of MGR Treasure. This is an eye appealing bull with negative 1.1 BW EPD and top 20% for weaning and 10% for yearling weight EPD's. All the growth you need with exceptional calving ease.



Reference Sire **GW PTO 536D**  
Sire: Sire Name MGS: Maternal Grand Sire name

CE	BW	WW	YW	MCE	ADG	YG	Marb.	REA	API	TI
12.1	0.7	71	129.7	6.1	0.37	-0.12	0.52	0.21	162.6	85.5

GW PTO 536D was our pick of the purebred bulls at the Gateway sale in 2017. He is moderate framed and very easy fleshing. He has passed that on to his females. Combines a complete package of calving ease, power, and carcass.



**LOT 22 • TT HOT STUFF 614H**

Lot **22 TT HOT STUFF 614H**

BD	Color	%Sim	BW/Ratio	205/Ratio	P/S
3/8/20	BB	PB SM	83/94	745/97	PP
GW PTO 345B					
GW PTO 536D					
GW MISS GOLD DIGGER 582A					
TT HOT STUFF 614H Reg #:3769538					
TT PROGRESS 215B					
TT MS PROGRESS 614D					
TT MS SUBSTANCE 414B					

EPDs		%
CE	17.1	2%
BW	-4.5	1%
WW	59.5	99%
YW	93.9	95%
MCE	10.5	2%
Milk	26.3	30%
MWW	56	80%
YG	-0.18	99%
Marb.	0.58	1%
REA	0.31	99%
r		
API	167.2	2%
r		
TI	81.8	30%

This PTO son is a big-time heifer bull candidate. Top 1% for BW, Top 2% for CE, top 2% for MCE and Top 2% for API. This homo polled and black prospect will add profit to your herd. He will sire superior females that will thrive in any operation.



**LOT 23 • TT HOT BEEF 533H**

Lot **23 TT HOT BEEF 533H**

BD	Color	%Sim	BW/Ratio	205/Ratio	P/S
3/26/20	BB	PB SM	88/99	803/104	PP
GW PTO 345B					
GW PTO 536D					
GW MISS GOLD DIGGER 582A					
TT HOT BEEF 533H Reg #:3769556					
HOOKS ATLANTIC 18A					
TT MS ATLANTIC 533C					
TT MS EIGHT BALL 133Y					

	EPDs	%
	CE	8.6 80%
	BW	1.6 50%
	WW	77.3 50%
	YW	129.5 20%
	MCE	6.6 35%
	Milk	29.6 15%
	MWW	68.2 20%
	YG	-0.22 99%
	Marb.	0.46 4%
	REA	0.59 99%
ex d	API	149.5 15%
	TI	86.1 15%

Homo polled and black PTO son with more performance. TT Hot Beef had a 205 adjusted weight of 803 with an index of 104. Tallies a 77 WW EPD and 130 YW EPD. A very good bull that will add pounds and performance and dollars to your calf crop.



**LOT 24 • TT HOT SHOT 215H**

Lot **24 TT HOT SHOT 215H**

BD	Color	%Sim	BW/Ratio	205/Ratio	P/S
3/12/20	BB	PB SM	90/100	758/99	PP
GW PTO 345B					
GW PTO 536D					
GW MISS GOLD DIGGER 582A					
TT HOT SHOT 215H Reg #:3769475					
HOOKS SHEAR FORCE 38K					
TT MS FORCE 215Z					
TT MS MAJORITY 045X					

EPDs	%	
CE	13.3	20%
BW	-0.1	20%
WW	58.4	99%
YW	96.7	90%
MCE	8	15%
Milk	29.9	10%
MWW	59.1	65%
YG	-0.27	99%
Marb.	0.24	25%
REA	0.33	99%
API	141.2	25%
TI	71.8	75%

TT Hot Shot is out of a super Shear Force daughter 215Z. She is also the mother to TT Progress 215B. This homo polled PTO son is moderate framed, big volume with muscle and mass. He will add value in many ways from elite females you will want to retain to high valued males to market.





**LOT 25 • TT HOT ROD 662H**

Lot **25** **TT HOT ROD 662H**

BD	Color	%Sim	BW/Ratio	205/Ratio	P/S
3/18/20	BB	PB SM	85/97	757/98	PP
GW PTO 345B					
GW PTO 536D					
GW MISS GOLD DIGGER 582A					
TT HOT ROD 662H Reg #:3769498					
ASR AUGUSTUS Z2165					
TT MS AUGUSTUS 662D					
TT MS PIONEER 162Y					

EPDs	%
CE	12.9 25%
BW	0.2 25%
WW	60.4 99%
YW	92.9 95%
MCE	7.2 25%
Milk	24.6 40%
MWW	54.8 85%
YG	-0.31 95%
Marb.	0.3 15%
REA	0.49 99%
API	149.6 10%
TI	73.4 65%

TT Hot Rod is an all-around good bull. He is homo polled and black, out of a super Augustus female that is good footed and great uddered. Do not miss out on these PTO sons.

Lot **26** **TT HITCH 797H**

BD	Color	%Sim	BW/Ratio	205/Ratio	P/S
3/14/20	BR	PB SM	90/104	797/104	PP
GW PTO 345B					
GW PTO 536D					
GW MISS GOLD DIGGER 582A					
TT HITCH 797H Reg #:3769446					
HOOK'S RED ZONE 79Z					
TT MS RED ZONE 797E					
TT MS RUSHMORE 497B					

EPDs	%
CE	13.7 15%
BW	1.7 50%
WW	75.8 55%
YW	128.7 20%
MCE	6.7 35%
Milk	24 45%
MWW	61.9 50%
YG	-0.41 60%
Marb.	0.3 15%
REA	0.94 35%
API	156.3 10%
TI	82.4 25%

Hitch will add overall growth, performance, and profitability to his calf crops. He had indexes of 104, 104 and 103 for BW, WW and YW.

Lot **27** **TT HESSTON 421H**

BD	Color	%Sim	BW/Ratio	205/Ratio	P/S
3/26/20	BB	3/4 SM	85/94	769/100	PH
GW PTO 345B					
GW PTO 536D					
GW MISS GOLD DIGGER 582A					
TT HESSTON 421H Reg #:3769544					
G A R PROGRESS					
TT MS PROGRESS 421B					
TT MS EIGHTBALL 221Z					

EPDs	%
CE	19.1 2%
BW	-2.7 10%
WW	59.6 95%
YW	92.5 95%
MCE	11.2 3%
Milk	31.3 3%
MWW	61.1 45%
YG	-0.12 80%
Marb.	0.83 2%
REA	0.21 99%
API	172.9 2%
TI	86.1 15%

TT Hesston is a unique individual out of PTO, going back to our 421 donor. Ms Progress has sorted herself to the donor pen from her consistent performance over the years. Last year she raised one of our high selling lots with TT The Gipper going to Begger's Diamond V Ranch. She is also the mother of 10,11,12 and Elite 8, member lot 51 TT Hailey.





## Reference Sire **TT EQUITY 060E**

Sire: Sire Name **MGS**: Maternal Grand Sire name

CE	BW	WW	YW	MCE	ADG	YG	Marb.	REA	API	TI
10.3	1.6	89.7	128.5	5.2	0.24	-0.46	0.25	1.17	128.1	88.1



**LOT 28 • TT HANK 108H**

TT Equity was one of our high sellers in 2018 that we collected and sampled within our own herd. He did not disappoint. Equity did a nice job of siring cattle with muscle, capacity, and growth. We will continue to use him as we go forward.

## Lot **28** **TT HANK 108H**

BD	Color	%Sim	BW/Ratio	205/Ratio	P/S
2/23/20	BR	PB SM	98/110	880/114	PP

W/C EXECUTIVE ORDER 8543B

TT EQUITY 060E

TT MS FORCE 060X

**TT HANK 108H** Reg #:3769452

SRS RIGHT-ON 22R

BTS ON TRACK 108Y

BTS REBAS DREAM S612

EPDs	%
CE	7.9 85%
BW	2.1 60%
WW	86.5 15%
YW	127.3 20%
MCE	3.4 90%
Milk	30.9 10%
MWW	74.1 10%
YG	-0.42 55%
Marb.	0.23 25%
REA	1 25%
API	135.7 30%
TI	85.2 20%

Hank is packed with power and growth. If you are looking for a bit more frame and added growth pay attention here. He was the second-high weaning calf in his contemporary group with 114 index at 880 pounds. The Equity calves have been extremely good with excellent performance.

## Lot **29** **TT HAVANNA 553H**

BD	Color	%Sim	BW/Ratio	205/Ratio	P/S
2/11/20	BB	PB SM	86/97	733/95	PP

W/C EXECUTIVE ORDER 8543B

TT EQUITY 060E

TT MS FORCE 060X

**TT HAVANNA 553H** Reg #:3769489

HOOKS ATLANTIC 18A

TT MS ATLANTIC 553C

KSR MS DEX 850T

EPDs	%
CE	9.4 70%
BW	0.2 25%
WW	79.4 40%
YW	115.8 45%
MCE	5.9 50%
Milk	25.3 35%
MWW	64.9 35%
YG	-0.45 40%
Marb.	0.15 40%
REA	1.17 5%
API	130.2 45%
TI	80.9 30%

Here is another Equity son you will want to pay attention too. His mother is an Atlantic daughter that has shined. She is the mother to last year's high selling bred in the Elite 8 going to Kenner Simmentals. She has a bred heifer in our herd this year that is phenomenal. Havana will excel as well. A power back pedigree here.

## Lot **30** **TT HAWKSNEST 540H**

BD	Color	%Sim	BW/Ratio	205/Ratio	P/S
2/27/20	BB	PB SM	87/98	778/101	PP

LANCASTER ENFORCER K25

GW OUTBACK 485F

GW MISS GPRD 298Z

**TT HAWKSNEST 540H** Reg #:3769440

BTS SHEAR BRILLIANCE104Y

TT MS BUBBA 540C

BTS SWEET DREAM S610

EPDs	%
CE	13.6 15%
BW	2.5 70%
WW	83.6 25%
YW	128.5 20%
MCE	7.9 15%
Milk	29.6 15%
MWW	71.3 10%
YG	-0.38 75%
Marb.	0.52 2%
REA	0.89 50%
API	169.7 2%
TI	91.1 5%

This guy is out of a new bull we sampled from Gateway. This Outback son has a tremendous API ranking in the top 1% for a purebred at 170 and top 5% for TI with 91. Also ranks in the top 2% for marbling and 1% for stayability.

## Lot **31** **TT HOUDINI 529H**

BD	Color	%Sim	BW/Ratio	205/Ratio	P/S
3/22/20	BB	PB SM	88/100	759/99	PP

HOOK'S BOZEMAN 8B

TT DYNAMIC 495D

BTS MS GAMBLER 715T

**TT HOUDINI 529H** Reg #:3769509

BTS SHEAR BRILLIANCE104Y

TT MS BUBBA 529C

TT MS PAYDIRT 029X

EPDs	%
CE	12 35%
BW	0.8 30%
WW	58.8 99%
YW	96.6 90%
MCE	7.1 25%
Milk	23.5 50%
MWW	52.9 95%
YG	-0.5 15%
Marb.	0.15 40%
REA	0.83 65%
API	137.6 30%
TI	69 85%

This guy is out of a Bozeman son we kept that did a super job. An exceptional well-balanced bull with a lot to offer. From outstanding females to superb steers this guy will perform.



**LOT 31 • TT HOUDINI 529H**



# Red Bulls

## Reference Sire **IR IMPERIAL D948**

Sire: Sire Name MGS: Maternal Grand Sire name

CE	BW	WW	YW	MCE	ADG	YG	Marb.	REA	API	TI
18.4	-3.5	62.8	96.7	10.8	0.21	-0.45	0.73	0.93	187.8	91.7

IR Imperial is one of the most exciting red bulls in the past few years. He has breed leading CE, Marbling, API and TI. Has sired many high sellers last year.



## Lot **32** **TT HUDSON 689H**

BD	Color	%Sim	BW/Ratio	205/Ratio	P/S
2/18/20	R	PB SM	91/104	850/111	PP

IR IMPERIAL B772

IR IMPERIAL D948

IR MS DUAL FOCUS W086

TT HUDSON 689H Reg #: 3769559

RFS RED IRON T20

TT MS RED IRON 689D

KSR CURL 889T

EPDs	%
CE	9.2 70%
BW	3.7 90%
WW	84.1 25%
YW	130.5 20%
MCE	5.7 50%
Milk	24.7 40%
MWW	66.8 25%
YG	-0.54 5%
Marb.	0.31 15%
REA	1.29 2%
API	141.4 20%
TI	84.4 20%

Power, muscle and performance describe this guy. Homo polled son of Imperial out of a Red Iron daughter. Hudson recorded an 850-pound adjusted weaning weight with 111 index. Has an 84 and 130 for WW and YW EPD's.

## LOT 32 • TT HUDSON 689H



## LOT 33 • TT HARWOOD 157H

## Lot **33** **TT HARWOOD 157H**

BD	Color	%Sim	BW/Ratio	205/Ratio	P/S
2/16/20	R	PB SM	70/79	736/96	PP

IR IMPERIAL B772

IR IMPERIAL D948

IR MS DUAL FOCUS W086

TT HARWOOD 157H Reg #: 3769565

HOOKS SHEAR FORCE 38K

TT MS RED FORCE 157Y

TT MS MAJORITY 57W

EPDs	%
CE	18.2 1%
BW	-3.7 1%
WW	59.5 99%
YW	87.7 99%
MCE	11 1%
Milk	27 25%
MWW	56.7 75%
YG	-0.39 70%
Marb.	0.34 15%
REA	0.83 65%
API	166.8 2%
TI	79.6 35%

Harwood is a super attractive heifer bull prospect. He ranks in the top 1% for calving ease and birth weight, along with maternal calving ease. His mother is a coming 10-year-old that has a 361-calving interval. If you want a heifer bull with a good look and good performance, here is your guy.





**LOT 34 • TT HAVRE 892H**

Lot **34** **TT HAVRE 892H**

BD	Color	%Sim	BW/Ratio	205/Ratio	P/S
2/13/20	R	PB SM	86/102	792/103	PP
IR IMPERIAL B772					
IR IMPERIAL D948					
IR MS DUAL FOCUS W086					
TT HAVRE 892H Reg #:3769427					
TT FIREBALL 280B					
TT MS FIREBALL 892F					
TT MS ATLANTIC 692D					

EPDs	%
CE	14.7 10%
BW	-0.1 20%
WW	84 25%
YW	130.9 15%
MCE	9.4 5%
Milk	24.1 45%
MWW	66.1 30%
YG	-0.37 80%
Marb.	0.52 2%
REA	0.79 70%
API	158.3 5%
TI	90.3 10%

Here is another Imperial heifer bull prospect that computes a 15-calving ease EPD and -.1 BW EPD. Out of a Fireball daughter who is doing a great job. This guy has a bit more growth as well with an 84 and 131 WW and YW EPD's.



Lot **35** **TT HALLIDAY 798H**

BD	Color	%Sim	BW/Ratio	205/Ratio	P/S
2/24/20	R	3/4 SM	88/101	784/102	PP
IR IMPERIAL B772					
IR IMPERIAL D948					
IR MS DUAL FOCUS W086					
TT HALLIDAY 798H Reg #:3769434					
SCHULER REBEL 0029X					
TT MS REBEL 798E					
KS MISS AUTHORITY C598					

EPDs	%
CE	11.9 55%
BW	0.3 50%
WW	89.1 10%
YW	137.2 10%
MCE	6.5 60%
Milk	30.4 4%
MWW	74.9 3%
YG	-0.09 90%
Marb.	0.47 20%
REA	0.36 95%
API	150.7 15%
TI	90.3 10%

TT Halliday is a 3/4 blood Imperial that ranks in the top 10% for WW and YW at 89 and 137. He tallied a 101 index for BW, 102 for WW and 101 for YW. A top producer that should add growth to his calf crops.

*Reference Sire* **CDI HOMETOWN 246A**

Sire: Sire Name **MGS:** Maternal Grand Sire name

CE	BW	WW	YW	MCE	ADG	YG	Marb.	REA	API	TI
4.8	4.2	105.1	162	2.1	0.36	-0.55	0.5	1.57	161.1	101.7

CDI Hometown provides top-ranking weaning and yearling EPD sire to use to add pounds on a set of red commercial cows or to produce red Simmental sons that will add extra pounds with mating flexibility. Yet top ranking EPDs for MARB and REA.



**LOT 36 • TT HOMERUN 700H**

Lot **36** **TT HOMERUN 700H**

BD	Color	%Sim	BW/Ratio	205/Ratio	P/S
2/20/20	R	PB SM	92/107	858/112	PP
GW REDESTINED 642X					
CDI HOMETOWN 246A					
CDI MS TRUMP 86U					
TT HOMERUN 700H Reg #:3769487					
TT TOUCHDOWN 360C					
TT MS TOUCHDOWN 700E					
KS MISS ALL IN C931					

EPDs	%
CE	6.1 95%
BW	3.3 85%
WW	98.6 2%
YW	145.9 4%
MCE	3 95%
Milk	33.7 3%
MWW	82.9 1%
YG	-0.63 1%
Marb.	0.22 25%
REA	1.43 1%
API	142.8 20%
TI	92 5%

TT Homerun is just that a Homerun. This homo polled Hometown packs a powerful punch with top 2% WW EPD and top 4% YW EPD. He had an 858 adjusted weaning weight with a 112 index and 1492 adjusted yearling weight with 113 index. Look up this powerhouse sale day.



Reference Sire **TT ELITE 610E**  
Sire: Sire Name MGS: Maternal Grand Sire name

CE	BW	WW	YW	MCE	ADG	YG	Marb.	REA	API	TI
6.9	3.4	78.9	117.2	3.8	0.24	-0.23	0.59	0.38	146.7	82.4

TT Elite was one of our top selling bulls in 2018. We collected and sampled him within our herd. We are extremely satisfied with his success. He sired very functional cattle with great volume, mass, and growth. We are excited to see how his daughters will do as well.



## LOT 37 • TT HEARTLAND 612H

### Lot 37 TT HEARTLAND 612H

BD	Color	%Sim	BW/Ratio	205/Ratio	P/S
3/2/20	R	3/4 SM	93/106	814/106	PP
BROWN COMMITMENT S7206					
TT ELITE 610E					
BTS SWEET DREAM S610					
TT HEARTLAND 612H Reg #: 3769537					
RFS RED IRON T20					
TT MS RED IRON 612D					
TT MS MAJORITY 200Z					

TT Heartland is an Elite son with extra power and performance. He topped the scale with an adjusted weaning weight of 814 pounds with a 106 index along with a 1394 with 106 index. He is big topped, deep bodied and heavy muscled. Look for him to add extra muscle and pounds to his calf crops.

EPDs	%
CE	7.5 95%
BW	1.7 75%
WW	77.1 40%
YW	113.5 55%
MCE	5.7 70%
Milk	28.1 10%
MWW	66.6 20%
YG	-0.35 20%
Marb.	0.21 70%
REA	0.68 45%
API	129.8 50%
TI	74.8 60%

### Lot 38 TT HITMAN 697H

BD	Color	%Sim	BW/Ratio	205/Ratio	P/S
2/20/20	R	3/4 SM	93/106	790/103	PP
BROWN COMMITMENT S7206					
TT ELITE 610E					
BTS SWEET DREAM S610					
TT HITMAN 697H Reg #: 3769566					
HOOK'S RED ZONE 79Z					
TT MS RED ZONE 697D					
TT MS RUSHMORE 497B					

Hitman is a homo polled Elite son with size, length, and depth. Weaned at 790 pounds with 103 index. He ranks in the top 10% for WW and YW at 91 and 139, respectively. Hitman will sire calves with more performance, pounds, and profit.

EPDs	%
CE	9.4 85%
BW	3.9 99%
WW	91.3 10%
YW	138.7 10%
MCE	4.6 85%
Milk	23.4 45%
MWW	68.9 15%
YG	-0.44 5%
Marb.	0.43 30%
REA	0.82 25%
API	142.2 25%
TI	86.8 15%

Notes:





## LOT 39 • TT HARLEY 699H

### Lot 39 TT HARLEY 699H

BD 2/18/20 Color R %Sim 3/4 SM BW/Ratio 94/107 205/Ratio 753/98 P/S PP

BROWN COMMITMENT S7206

TT ELITE 610E

BTS SWEET DREAM S610

TT HARLEY 699H Reg #3769570

HOOK'S RED ZONE 79Z

TT MS RED ZONE 699D

TT MS MAJORITY

EPDs	%
CE	8.2 95%
BW	3.9 99%
WW	78.2 35%
YW	116.4 50%
MCE	4.6 85%
Milk	26.5 20%
MWW	65.6 25%
YG	-0.27 40%
Marb.	0.52 15%
REA	0.57 65%

API	141.9	25%
TI	80.3	40%

Harley is a 3/4 blood homo polled Elite son with overall balance. He comes from a Red Zone daughter who is doing things right. This blending of Elite x Red Zone's is a perfect combination for profitable and functional cattle.

### Lot 40 TT HISTORY 200H

BD 2/15/20 Color R %Sim 3/4 SM BW/Ratio 81/90 205/Ratio 746/97 P/S PP

BROWN COMMITMENT S7206

TT ELITE 610E

BTS SWEET DREAM S610

TT HISTORY 200H Reg #3769467

HSF MAJORITY 141S

TT MS MAJORITY 200Z

KSR RED PASSION 400N

EPDs	%
CE	13.3 40%
BW	-1.5 20%
WW	65.6 85%
YW	98.7 85%
MCE	10 10%
Milk	27.5 15%
MWW	60.3 50%
YG	-0.18 65%
Marb.	0.12 85%
REA	0.32 95%

API	138.6	30%
TI	69.6	80%

This Elite son has the potential of being a heifer bull. He posts a negative 1.7 BW EPD and actual BW of 80 pounds. His Majority daughter is a long-time producer that has produced 3 bulls that have made the sale. She has had 7 calves with 364 calving intervals.

## Watch & Bid online for FREE at

# DVAuction

Broadcasting Real-Time Auctions



**Can't make the sale? Bid from home with DV Auction's "real-time" internet bidding service! Buying online is as easy as 1, 2, 3...**

1. Create an account at [www.dvauction.com](http://www.dvauction.com) under the "register" tab.
2. Apply for bidding approval by clicking on the "details" tab at least 24 hours prior to the auction - a DV representative will notify you once you have been approved.
3. Tune in for the sale and make your purchases!

After the sale, contact the sale manager or owner to arrange transportation and payment. **High speed internet** is required for successful bidding - be sure to check the lag-time monitor in the top left corner to ensure real-time broadcasts.

**Proxy Bidding:** If you can't make time to watch the sale, register a proxy bid and let our system represent your bid while you're away. Look for the "proxy bid" tab on the auction listing and fill in your maximum bids. We'll handle the rest!

**Having troubles?** During the auction, you can type a message to the operator at any time for assistance. Our full-time support team can also always be reached at (402) 474-5557.





*Reference Sire* **HOOK'S RED ZONE 79Z**

Sire: Sire Name MGS: Maternal Grand Sire name

CE	BW	WW	YW	MCE	ADG	YG	Marb.	REA	API	TI
13.9	0.5	83.6	120.6	5.2	0.23	-0.63	0.37	1.47	156.4	89.7

Hook's Red Zone has been a staple here for several years now. He was high selling bull in Hook's sale in 2013. He has produced many high selling bulls and females here over the years. His daughters have done a great job and sons have performed well.



## LOT 41 • TT HUNTER 420H

Lot **41** **TT HUNTER 420H**

BD	Color	%Sim	BW/Ratio	205/Ratio	P/S
3/27/20	R	PB SM	100/112	867/113	PP
WS BEEF KING W107					
HOOK'S RED ZONE 79Z					
HOOK'S UNCENSORED 47U					
TT HUNTER 420H Reg #:3769432					
WS EIGHT BALL W114					
TT MS EIGHTBALL 420B					
BTS TOMAHAWK 020X					

If you are looking for a stout thick powerhouse, here he is. TT Hunter is a Red Zone son that performed at the top. He was 3rd in his contemporary group with an 867-pound adjusted weaning weight with a 113 index. He topped the scales for YW at 1394 with 106 index. This powerhouse will sire big time performance in his offspring.

EPDs	%
CE	8.5 80%
BW	4.4 95%
WW	94.4 4%
YW	143.2 5%
MCE	4.2 80%
Milk	27.4 20%
MWW	74.5 5%
YG	-0.55 4%
Marb.	0.07 65%
REA	1.21 4%
API	126.7 50%
TI	84 20%

Lot **42** **TT HEBRON 877H**

BD	Color	%Sim	BW/Ratio	205/Ratio	P/S
2/23/20	R	PB SM	73/89	736/96	PP
WS BEEF KING W107					
HOOK'S RED ZONE 79Z					
HOOK'S UNCENSORED 47U					
TT HEBRON 877H Reg #:3769524					
CDI HOMETOWN 246A					
TT MS HOMETOWN 877F					
TT MS RUSHMORE 497B					

Here is another Red Zone that will offer performance and profit with calving ease. Hebron ranks in the top 5% for CE with a 15.7 and top 3% for API with 164. You will like this guy for his moderate frame, deep body, and overall stoutness. These Red Zone's have been very accepted in the past.

EPDs	%
CE	15.7 5%
BW	-0.6 15%
WW	74 60%
YW	112.1 55%
MCE	7.7 20%
Milk	22.7 55%
MWW	59.7 60%
YG	-0.51 15%
Marb.	0.35 10%
REA	1.33 2%
API	163.8 3%
TI	84.9 20%





### Reference Sire **TT FIREBALL 280B**

Sire: Sire Name MGS: Maternal Grand Sire name

CE	BW	WW	YW	MCE	ADG	YG	Marb.	REA	API	TI
21.2	-5.1	59.5	85	13.6	0.16	-0.25	0.35	0.53	142.7	77

TT Fireball continues to gain popularity after many years of progeny. He is a sure-fire calving ease bull with added performance and thickness. His daughters have been doing an excellent job. He sires extremely good footed females with exceptional udders.



**LOT 44 • TT HATTON 805H**

### Lot **44** **TT HATTON 805H**

BD	Color	%Sim	BW/Ratio	205/Ratio	P/S
2/19/20	R	3/4 SM	77/93	777/101	PP

EPDs	%
CE	17
BW	-2.6
WW	72.5
YW	109.1
MCE	10.4
Milk	30
MWW	66.2
YG	-0.32
Marb.	0.4
REA	0.77
API	147.5
TI	83.5

HXC CONQUEST 4405P  
TT FIREBALL 280B  
TT MS FORCE 280Z  
**TT HATTON 805H** Reg #:3769450  
CDI HOMETOWN 246A  
TT MS HOMETOWN 805F  
TT MS BEEF 205Z

TT Hatton is another Fireball out of a Hometown first calf heifer. He records a 17 CE with negative 2.6 BW EPD's. Look for his offspring to come easy and perform at the top.



**LOT 46 • TT HARMONY 775H**

### Lot **43** **TT HAMILTON 848H**

BD	Color	%Sim	BW/Ratio	205/Ratio	P/S
2/17/20	R	3/4 SM	71/86	809/105	PP

HXC CONQUEST 4405P  
TT FIREBALL 280B  
TT MS FORCE 280Z  
**TT HAMILTON 848H** Reg #:3769442  
CDI HOMETOWN 246A  
TT MS HOMETOWN 848F  
KR MS RODGE Z158

Here is an interesting combination out of a first calf heifer. This combo of Fireball and Hometown has been a hit. A blend of calving ease with Fireball and growth with Hometown. Hamilton had an actual 71-pound birth weight and tipped the scales with an 809-pound adjusted weaning weight and 1375 yearling weight.

EPDs	%
CE	16.2
BW	-1.9
WW	76.2
YW	107.7
MCE	10.5
Milk	33
MWW	71
YG	-0.34
Marb.	0.23
REA	0.82
API	138.4
TI	80.6

### Lot **45** **TT HANS 732H**

BD	Color	%Sim	BW/Ratio	205/Ratio	P/S
3/18/20	R	PB SM	96/111	791/103	PP

GW COMMOTION 333B  
KS MR COMMOTION E236  
KS COLUMBA C71  
**TT HANS 732H** Reg #:3769516  
HOOK'S RED ZONE 79Z  
TT MS RED ZONE 732E  
TT MAJORITY 131Y

Hans is a high-performance son out of Commotion going back to a Red Zone daughter. This fantastic combo will provide you with extra performance and added profit.

EPDs	%
CE	8.7
BW	2.4
WW	76.8
YW	119.3
MCE	5.1
Milk	25.3
MWW	63.6
YG	-0.22
Marb.	0.42
REA	0.79
API	146.7
TI	82.7

### Lot **46** **TT HARMONY 775H**

BD	Color	%Sim	BW/Ratio	205/Ratio	P/S
2/23/20	R	1/2 SM	79/91	703/91	PP

LSF TAKEOVER 9943W  
OOO SIR LOIN 5122  
BROWN MS PARAMOUNT A7033  
**TT HARMONY 775H** Reg #:3769485  
CDI BOLT 273C  
TT MS BOLT 775E  
TT MS CISCO 975U

TT Harmony is our only 1/2 blood red bull. This Sirloin son is moderate framed, thick topped with a big hip.

EPDs	%
CE	11.1
BW	-1
WW	59.3
YW	90.2
MCE	5.4
Milk	21
MWW	50.6
YG	-0.16
Marb.	0.38
REA	0.58
API	134.3
TI	70.6



# The Elite 8

The ELITE 8 is an opportunity to own our best. We again have selected some of our top female prospects for you. We will retain the right of one flush on each of these females. We could not let this quality of females go without this opportunity to maintain their genetics. Take some time and analyze these elite females.



The Elite 8

## LOT 47 • TT MS PTO 910G



### Lot 47 TT MS PTO 910G

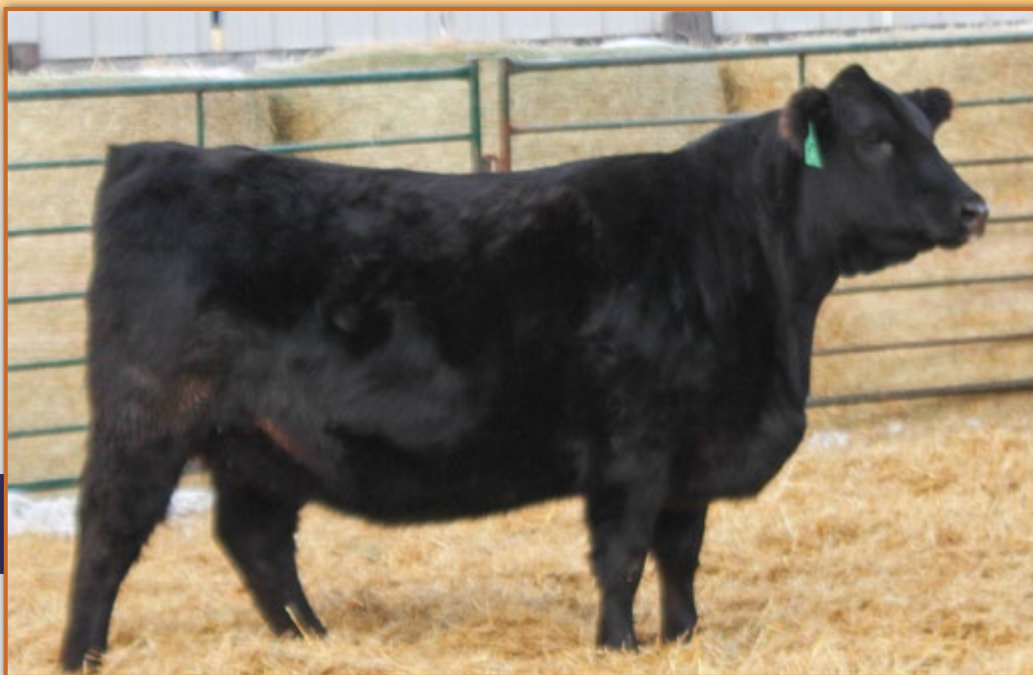
BD	Color	%Sim	BW/Ratio	205/Ratio	P/S
3/16/19	Homo Black	PB SM	86/102	643/91	
GW PTO 345B					
GW PTO 536D					
GW MISS GOLD DIGGER 582A					
TT MS PTO 910G Reg #3614326					
HOOKS SHEAR FORCE 38K					
TT ABBY 301A					
TT DIAMOND GIRL 913U					

EPDs	%
CE	13.4 20%
BW	0.1 20%
WW	67.1 85%
YW	113 55%
MCE	6.9 30%
Milk	22.2 60%
MWW	55.7 80%
YG	-0.21 99%
Marb.	0.38 10%
REA	0.53 99%
API	151.6 10%
TI	79.7 35%

Here is a baldy out of PTO that will turn some heads. These PTO daughters have been phenomenal mothers. She is the brood cow kind being deep bodied with a big sweeping rib. Her mother is a fabulous Shear Force dam that has been a super job over the years. Bred to IR Prospector for the end of April or early May.



The Elite 8



## LOT 48 • TT MS PTO 974G

### Lot 48 TT MS PTO 974G

BD	Color	%Sim	BW/Ratio	205/Ratio	P/S
3/22/19		3/4 SM	73/87	696/101	
GW PTO 345B					
GW PTO 536D					
GW MISS GOLD DIGGER 582A					
TT MS PTO 974G Reg #.3614317					
C R A BEXTOR 872 5205 608					
KSR MS BEXTOR 884T					
KSR DEXTERS STAR 684R					

EPDs	%
CE	14.3
BW	-0.9
WW	63.5
YW	101.3
MCE	7.3
Milk	24.9
MWW	56.6
YG	-0.25
Marb.	0.42
REA	0.54
API	144.8
TI	76

Here is another tremendous PTO daughter. She is moderate frame with a ton of volume and big, huge top. She has it all to make a super brood cow. Do not miss this powerful breeding piece on sale day. Bred to TT Forward around July 10th to calve around April 19th.

### Lot 49 TT GIZELLE 956G

BD	Color	%Sim	BW/Ratio	205/Ratio	P/S
2/6/19		5/8 SM	70/87	625/91	
W/C EXECUTIVE ORDER 8543B					
TT EQUITY 060E					
TT MS FORCE 060X					
TT GIZELLE 956G Reg #.3614367					
R B TOUR OF DUTY 177					
TT MS TOUR 656D					
TT MS FORTUNE 56W					

EPDs	%
CE	13.1
BW	0
WW	80.3
YW	122.2
MCE	7.7
Milk	22
MWW	62.2
YG	-0.29
Marb.	0.36
REA	0.83
API	133.4
TI	82.8

TT Gizelle is as eye appealing and sweet fronted as you can get with this much power and mass. You must love her for her big deep body and full solid hip shape. Look for her to produce some front-end bulls in her future. Bred to TT Forward 668F around June 20 to calve around March 30th.



## LOT 49 • TT GIZELLE 956G

The Elite 8





The *Elite 8*

## LOT 50 • TT MS PROFITBUILDER 930G

### Lot *50* TT MS PROFITBUILDER 930G

BD 2/11/19 Color %Sim 1/2 SM BW/Ratio 66/85 205/Ratio 715/104 P/S Homo Polled

LSF TAKEOVER 9943W  
H2R PROFITBUILDER B403  
BROWN MS P707 Y6674

TT MS PROFITBUILDER 930G Reg #:3614392  
WS EIGHT BALL W114  
TT MS EIGHTBALL 730E  
TT AVA330A

EPDs		%
CE	12.5	50%
BW	-1.6	20%
WW	70.9	65%
YW	109.4	65%
MCE	8.6	25%
Milk	29.6	10%
MWW	65	25%
YG	-0.07	90%
Marb.	0.48	20%
REA	0.29	99%
API	139.1	30%
TI	81.8	30%

This homo polled 1/2 blood is the standard of our 1/2 blood program. Moderate frame easy doing females with style and performance. The female is designed with massive body, deep flank, and big sweeping rib. She will be a brood cow machine in the future. Bred to TT Forward 668F around June 25 to calve around April 4th.

### Lot *51* TT HAILEY 084H

BD 2/29/20 Color Homo Black %Sim 3/4 SM BW/Ratio 84/ 205/Ratio 706/ Hetero Polled

CCR COWBOY CUT 5048Z  
WS PROCLAMATION E202  
WS MISS SUGAR C4

TT HAILEY 084H Reg #:3769466  
G A R PROGRESS  
TT MS PROGRESS 421B  
TT MS EIGHTBALL 221Z

EPDs		%
CE	16.4	10%
BW	-0.6	30%
WW	77.3	40%
YW	113.9	55%
MCE	10.8	4%
Milk	31.8	3%
MWW	70.4	10%
YG	-0.18	65%
Marb.	0.74	3%
REA	0.64	55%
API	164.1	4%
TI	91.8	5%

TT Hailey 084H is a flush mate to our 2020 State Sale heifer. This Proclamation female is a powerhouse. She is massive and sweet all at the same time. Out of our 421 Progress donor female, who is making her mark. Do not miss your chance here, to own one of her best.



The *Elite 8*

## LOT 51 • TT HAILEY 084H



# The Elite 8



**LOT 52 • TT HANA 095H**

## Lot 52 TT HANA 095H

BD	Color	%Sim	BW/Ratio	205/Ratio	P/S
3/3/20	Homo Black	PB SM	83/101	730/109	Homo Polled

GW PTO 345B  
 GW PTO 536D  
 GW MISS GOLD DIGGER 582A  
 TT HANA 095H Reg #:3769563  
 HOOK'S BOZEMAN 8B  
 TT MS BOZEMAN 695D  
 KNH HAZEL 295Y

EPDs	%
CE	12.2 30%
BW	0.5 25%
WW	76.8 50%
YW	126.4 25%
MCE	5.6 55%
Milk	27 25%
MWW	65.3 30%
YG	-0.27 99%
Marb.	0.33 15%
REA	0.63 95%
API	152.2 10%
TI	84.3 20%

TT Hana 095H is a PTO, out of a Bozeman daughter with huge potential. She is a long necked sweet, fronted heifer with big sweeping rib and massive volume. These PTO females are great mothers, look for them to make a big impact in the future. This heifer is no different, she is backed by great females in her background and the new maternal cow maker GW PTO.



**LOT 53 • TT HOPE 090H**

## Lot 53 TT HOPE 090H

BD	Color	%Sim	BW/Ratio	205/Ratio	P/S
2/21/20		PB SM	68/	631/	Homo Polled

IR IMPERIAL B772  
 IR IMPERIAL D948  
 IR MS DUAL FOCUS W086  
 TT HOPE 090H Reg #:3769472  
 HOOK'S RED ZONE 79Z  
 TT MS REDZONE 490B  
 TT MS MAJORITY 190Y

EPDs	%
CE	16.6 3%
BW	-1.1 10%
WW	66.1 90%
YW	101.3 80%
MCE	9.3 5%
Milk	24.1 45%
MWW	57.1 75%
YG	-0.42 55%
Marb.	0.56 2%
REA	0.9 45%
API	175.7 1%
TI	85.9 15%

TT Hope 090H is a homo polled Imperial daughter you will need to own. She tallies a 174 API, which puts her in the top 1% of the breed. Her mother is a Red Zone daughter that has already begun to make her mark here. She is the mother to TT Frisco high selling bull a few year's ago. She also made her way to the donor pen this spring and successfully produced 13 number one embryos.



**LOT 54 • TT HEIDI 098H**

## Lot 54 TT HEIDI 098H

BD	Color	%Sim	BW/Ratio	205/Ratio	P/S
2/12/20		3/4 SM	92/111	729/109	

BROWN COMMITMENT S7206  
 TT ELITE 610E  
 BTS SWEET DREAM S610  
 TT HEIDI 098H Reg #:3769506  
 CDI AUTHORITY 77X  
 KS MISS AUTHORITY C598  
 KS BRANDY S424

EPDs	%
CE	7.3 95%
BW	3.9 99%
WW	84.1 20%
YW	124.8 30%
MCE	4.1 90%
Milk	29.4 10%
MWW	71.4 10%
YG	-0.31 25%
Marb.	0.28 55%
REA	0.69 45%
API	125.9 55%
TI	78.3 45%

TT Heidi 098H is one to look for if you want power. She is a TT Elite daughter out of an Authority, we purchased from Kenner's. The heifer was one of our top weaning weight heifer calves. Indexed 109 with a 729 adjusted weaning weight. Heidi will add power, performance, and elegance to her offspring. Do not miss this red female on February 20th.



# Open Heifers



**LOT 55 • TT MS PTO 061H**



**LOT 56 • TT MS PTO 088H**

## Lot 55 TT MS PTO 061H

BD	Color	%Sim	BW/Ratio	205/Ratio	P/S
3/2/20	Homo Black	PB SM	89/110	601/90	Homo Polled

GW PTO 345B  
GW PTO 536D  
GW MISS GOLD DIGGER 582A  
TT MS PTO 061H Reg #:3769546  
HOOK'S BALTIC 17B  
TT MS BALTIC 721E  
TT MS PROGRESS 421B

TT Ms PTO 061H is a homo polled and black PTO daughter with a bright future. She is out of an awesome Baltic female going back to the 421 donor. Here is an opportunity for a special one.

EPDs	%
CE	12.3 30%
BW	1.4 45%
WW	65.3 90%
YW	110.8 60%
MCE	6.7 35%
Milk	21.8 65%
MWW	54.4 85%
YG	-0.13 99%
Marb.	0.56 2%
REA	0.3 99%
API	145.7 15%
TI	77 50%

## Lot 56 TT MS PTO 088H

BD	Color	%Sim	BW/Ratio	205/Ratio	P/S
3/16/20		PB SM	90/107	721/108	Homo Polled

GW PTO 345B  
GW PTO 536D  
GW MISS GOLD DIGGER 582A  
TT MS PTO 088H Reg #:3769517  
HOOK'S YAHOO 131Y  
TT MS 388A  
TT MS DEX 088X

TT Ms PTO 088H is another homo polled PTO daughter with superior performance. She had an index of 108 with a 723 adjusted weaning weight. She ranks in the top 10% for API at 149.

EPDs	%
CE	8.8 75%
BW	2.1 60%
WW	74.7 60%
YW	124.7 25%
MCE	4.7 70%
Milk	24.9 40%
MWW	62.2 45%
YG	-0.24 99%
Marb.	0.4 10%
REA	0.61 99%
API	149.4 15%
TI	82.1 25%

## Lot 57 TT MS PTO 017H

BD	Color	%Sim	BW/Ratio	205/Ratio	P/S
3/1/20	Homo Black	3/4 SM	78/96	643/96	Homo Polled

GW PTO 345B  
GW PTO 536D  
GW MISS GOLD DIGGER 582A  
TT MS PTO 017H Reg #:3769444  
AAR TEN X 7008 S A  
TT MS TEN X 718E  
TT MS BUBBA 518C

TT Ms PTO 017 is homo polled and black ¾ blood. She goes back to a super Ten X daughter. Sweet heifer with lots of body and mass.

EPDs	%
CE	14.9 20%
BW	-1 25%
WW	66 80%
YW	114.1 55%
MCE	8.9 20%
Milk	26.8 20%
MWW	59.7 50%
YG	-0.13 80%
Marb.	0.44 25%
REA	0.36 95%
API	149.6 15%
TI	78.3 45%

## Lot 58 TT MS PTO 079H

BD	Color	%Sim	BW/Ratio	205/Ratio	P/S
3/30/20		3/4 SM	87/107	616/100	Homo Polled

GW PTO 345B  
GW PTO 536D  
GW MISS GOLD DIGGER 582A  
TT MS PTO 079H Reg #:3769520  
GW NATIONAL 231C  
KBHR E379  
KBHR C016

TT Ms PTO 079 is homo polled and has a ton of growth. Note her WW EPD at 77 and YW EPD of 132. She ranks in the top 15% for API at 152.

EPDs	%
CE	12.1 55%
BW	1.7 75%
WW	77.1 40%
YW	132.8 15%
MCE	7.1 45%
Milk	30.7 4%
MWW	69.2 10%
YG	-0.08 90%
Marb.	0.56 15%
REA	0.32 95%
API	151.8 15%
TI	84.6 20%



## Lot 59 TT MS PTO 016H

BD	Color	%Sim	BW/Ratio	205/Ratio	P/S
3/18/20	Homo Black	PB SM	70/84	551/89	Homo Polled

GW PTO 345B  
GW PTO 536D  
GW MISS GOLD DIGGER 582A  
TT MS PTO 016H Reg #:3769547  
BTS SHEAR BRILLIANCE 104Y  
TT MS BUBBA 518C  
TT MS HIGH END 158Y

TT MS PTO 016H is homo polled and black. Another super made PTO daughter out of a Bubba daughter. This pure-bred heifer ranks in the top 10% for API. One to look at on sale day.

EPDs	%
CE	15.5
BW	-1.3
WW	59.6
YW	103.4
MCE	8.4
Milk	28.2
MWW	58
YG	-0.31
Marb.	0.32
REA	0.56
API	156.2
TI	76.7

## Lot 60 TT MS PTO 087H

BD	Color	%Sim	BW/Ratio	205/Ratio	P/S
4/16/20	Homo Black	3/4 SM	84/104	608/91	Homo Polled

GW PTO 345B  
GW PTO 536D  
GW MISS GOLD DIGGER 582A  
TT MS PTO 087H Reg #:3769436  
TT PROGRESS 215B  
TT MS PROGRESS 794E  
TT MS ATLANTIC 584C

TT MS PTO 087H is a 3/4 blood that is super sweet made with a load of body. She is the brood cow type with easy fleshing ability. Homo polled and black

EPDs	%
CE	13.9
BW	-0.3
WW	68.2
YW	114.1
MCE	7.8
Milk	25.2
MWW	59.3
YG	-0.14
Marb.	0.48
REA	0.34
API	147
TI	79.3

## Lot 61 TT MS PTO 056H

BD	Color	%Sim	BW/Ratio	205/Ratio	P/S
3/9/20		5/8 SM	86/104	565/84	

GW PTO 345B  
GW PTO 536D  
GW MISS GOLD DIGGER 582A  
TT MS PTO 056H Reg #:3769522  
R B TOUR OF DUTY 177  
TT MS TOUR 656D  
TT MS FORTUNE 56W

TT Ms PTO 056H is a moderate made female that will make a solid brood cow.

EPDs	%
CE	11.9
BW	1.2
WW	70.1
YW	122.1
MCE	6.8
Milk	23.8
MWW	58.8
YG	-0.12
Marb.	0.43
REA	0.3
API	141.8
TI	77.3

## Lot 62 TT MS BOZE 040H

BD	Color	%Sim	BW/Ratio	205/Ratio	P/S
4/8/20		PB SM	70/86	645/96	Homo Polled

HOOK'S BOZEMAN 8B  
TT DYNAMIC 495D  
BTS MS GAMBLER 715T  
TT MS BOZE 040H Reg #:3769529  
BTS SHEAR BRILLIANCE 104Y  
TT 634DD  
TT MS B TOTAL 334A

TT MS Boze 040H is a homo polled PB SM out of TT Dynamic. Another solid female with huge potential.

EPDs	%
CE	16.9
BW	-2.2
WW	50.4
YW	77.4
MCE	8.8
Milk	19.8
MWW	45
YG	-0.44
Marb.	0.3
REA	0.83
API	151.7
TI	70.8



LOT 64 • TT MS RED ZONE 054H

## Lot 64 TT MS RED ZONE 054H

BD	Color	%Sim	BW/Ratio	205/Ratio	P/S
2/18/20		PB SM	61/82	594/96	

WS BEEF KING W107  
HOOK'S RED ZONE 79Z  
HOOK'S UNCENSORED 47U  
TT MS RED ZONE 054H Reg #:3769497  
CDI BOLT 273C  
TT MS BOLT 854F  
TT MS 354A

TT Ms Red Zone 054H is another fantastic Red Zone daughter. She ranks in the top 20% with a 143 API. She has the look of a great brood cow.

EPDs	%
CE	16.1
BW	-1.4
WW	70.8
YW	102.8
MCE	8.1
Milk	25.1
MWW	60.4
YG	-0.42
Marb.	0.18
REA	0.9
API	145.2
TI	79.3

## Lot 65 TT MS RED ZONE 034H

BD	Color	%Sim	BW/Ratio	205/Ratio	P/S
3/27/20		3/4 SM	83/100	628/102	

WS BEEF KING W107  
HOOK'S RED ZONE 79Z  
HOOK'S UNCENSORED 47U  
TT MS RED ZONE 034H Reg #:3769527  
BROWN COMMITMENT S7206  
TT MS COMMITMENT 631D  
TT MAJORITY 131Y

TT Ms Red Zone 034 is out of an awesome Commitment daughter, this 3/4 blood heifer will be a standout cow as time goes on. She is the brood cow type with brood cow look.

EPDs	%
CE	12.5
BW	0.1
WW	75.2
YW	111.7
MCE	6.5
Milk	25.7
MWW	63.3
YG	-0.33
Marb.	0.51
REA	0.8
API	153.6
TI	83.7



## Lot 66 TT MS ELITE 057H

BD	Color	%Sim	BW/Ratio	205/Ratio	P/S
2/23/20		3/4 SM	97/116	610/99	Homo Polled

BROWN COMMITMENT S7206

TT ELITE 610E

BTS SWEET DREAM S610

TT MS ELITE 057H Reg #:3769480

RFS RED IRON T20

TT MS REDIRON 457B

TT MS GUN 957U

TT MS Elite 057 is a big volume heifer that is homo polled. This heifer is an all-around complete female with a load of promise.

EPDs	%
CE	5.7 99%
BW	3.9 99%
WW	77.9 40%
YW	109.6 65%
MCE	3.6 95%
Milk	22 60%
MWW	60.9 45%
YG	-0.4 10%
Marb.	0.37 35%
REA	0.6 60%
API	131.7 45%
TI	75.5 60%

## Lot 67 TT MS ELITE 019H

BD	Color	%Sim	BW/Ratio	205/Ratio	P/S
2/23/20		3/4 SM	82/98	599/97	

BROWN COMMITMENT S7206

TT ELITE 610E

BTS SWEET DREAM S610

TT MS ELITE 019H Reg #:3769523

RFS RED IRON T20

TT MS RED IRON 318A

TT MS GUNNER 910U

TT Ms Elite 019H is another Elite daughter out of a super Red Iron female. This heifer will do it all. She is big and deep bodied with massive top and big hip.

EPDs	%
CE	8.7 90%
BW	1.7 75%
WW	71.5 65%
YW	100.7 80%
MCE	5 80%
Milk	24.1 40%
MWW	59.8 50%
YG	-0.34 20%
Marb.	0.37 35%
REA	0.56 70%
API	136.8 35%
TI	74.9 60%



## LOT 69 • TT MS COMMOTION 089H

## Lot 69 TT MS COMMOTION 089H

BD	Color	%Sim	BW/Ratio	205/Ratio	P/S
3/23/20		PB SM	97/121	695/112	Homo Polled

GW COMMOTION 333B

KS MR COMMOTION E236

KS COLUMBA C71

TT MS COMMOTION 089H Reg #:3769499

HOOK'S RED ZONE 79Z

TT MS RED ZONE 793E

KR MS RODGE Z93

Lot 69 Here is a homo polled red female that is packed with power. Look at her WW and YW EPD's, she ranks in the top 3% for WW with a 96 and top 1% for YW weight with 154.

EPDs	%
CE	4.3 99%
BW	6 99%
WW	96.1 3%
YW	154.3 1%
MCE	0.4 99%
Milk	26 30%
MWW	74 10%
YG	-0.42 55%
Marb.	0.3 15%
REA	1.17 5%
API	134.3 35%
TI	87.7 10%

## Lot 70 TT MS COMMOTION 069H

BD	Color	%Sim	BW/Ratio	205/Ratio	P/S
3/26/20		PB SM	75/94	548/89	Homo Polled

GW COMMOTION 333B

KS MR COMMOTION E236

KS COLUMBA C71

TT MS COMMOTION 069H Reg #:3769425

HOOK'S RED ZONE 79Z

TT MS RED ZONE 768E

TT MS MAJORITY 008X

Lot 70 Another Commotion daughter with growth and performance. Out of a Red Zone female, this is a great combination of calving ease, growth, and carcass.

EPDs	%
CE	8.9 75%
BW	2.3 65%
WW	81.7 30%
YW	130.1 20%
MCE	4.9 70%
Milk	24.9 40%
MWW	65.7 30%
YG	-0.36 85%
Marb.	0.28 20%
REA	0.88 50%
API	139.8 25%
TI	83.3 25%

## Lot 71 TT MS COMMOTION 070H

BD	Color	%Sim	BW/Ratio	205/Ratio	P/S
3/23/20		PB SM	80/96	561/91	Homo Polled

GW COMMOTION 333B

KS MR COMMOTION E236

KS COLUMBA C71

TT MS COMMOTION 070H Reg #:3769568

HOOK'S RED ZONE 79Z

TT MS RED ZONE 570C

TT MS MAJORITY 70W

Lot 71 Take a look at this sweet Commotion daughter. She is a brood cow in the making. This Commotion X Red Zone combo is a sweet mating that works.

EPDs	%
CE	8.2 85%
BW	1.5 45%
WW	79.7 40%
YW	125.6 25%
MCE	4.3 80%
Milk	23 55%
MWW	62.8 45%
YG	-0.32 95%
Marb.	0.31 15%
REA	0.86 55%
API	142.2 20%
TI	83.3 25%

## Lot 72 TT MS COMMOTION 050H

BD	Color	%Sim	BW/Ratio	205/Ratio	P/S
3/16/20		PB SM	90/109	682/110	

GW COMMOTION 333B

KS MR COMMOTION E236

KS COLUMBA C71

TT MS COMMOTION 050H Reg #:3769558

HOOK'S RED ZONE 79Z

TT MS RED ZONE 550C

TT MS DIESEL 50W

Here is the Commotion X Red Zone combo again with great performance results. Look at the growth numbers here. She ranks in the top 1% for WW and YW with at 101 and 160. If you want power and performance here she is.

EPDs	%
CE	3.7 99%
BW	4.9 99%
WW	101.3 1%
YW	159.5 1%
MCE	-0.4 99%
Milk	28.1 20%
MWW	78.7 2%
YG	-0.41 60%
Marb.	0.23 25%
REA	1.17 5%
API	130.6 45%
TI	90.2 10%





Tim & Tam Clark  
1999 18th St NW  
Turtle Lake, ND 58575

