



13th Annual Production Sale
Feb. 19th 2022
At the Ranch, Turtle Lake, ND • 2 p.m. CST



www.DoubleTSimmentals.com



Welcome It is with great pleasure that we welcome you to our 13th Annual production sale. We are extremely excited about the 2022 class of bulls. It has been said over and over this is our best set of bulls to date. I hate to claim that each year, so I invite you to come see for yourself. You be the judge if this is truly the best of bulls to date. We strive to use breed leading bulls to advance our program and, in the end, advance your program as well.

As the industry moves into a new era of genomic data, we too have included more genomic data for your evaluation. With the entire cow herd and herd bulls being tested. We moved forward now to test our complete calf crop. This will enhance the overall accuracy and power of the genomic data. All bulls in the sale have been DNA profiled to provide Genomic Enhanced EPD's. With this increase in overall accuracy of young animals, this in turn will reduce some of the risk in making your bull selection. We work hard to offer as much information as possible to our customers, to make your decisions easier and more informed. All the bulls have also been tested for homo polled along with all black bulls tested for coat color. Black bulls will be indicated by a BB for homo black and BR for hetero black. Homo polled will be indicated by PP and hetero polled by HP. All the red bulls are diluter free. Which means, if used on black cows, no worries of producing a gray calf.

We pride ourselves on offering you all the information needed to make your bull selections. We will have yearling weights, frame score and scrotal measurements on a supplement sheet provided sale day. If you would like to break down these numbers before sale day, please give us a call. We will have them available prior to the sale.

We continue to breed cattle that will work for you and the entire industry. We want to raise cattle that are functional and profitable. The first order of business in any operation is to have a live calf. We have focused on cattle with calving ease and acceptable birth weights, while maintaining growth and performance for our commercial cattlemen.

Again, this year, we will be broadcasting the sale thru DV Auction service. We invite you to come walk through the bulls and females prior to the sale one on one. This will give you the opportunity to see them firsthand and on sale day bid over DV Auction in the comforts of your home. We will assist you any way we can to make it easier for you to purchase.

Simmental influenced cattle are more popular than any time before and sought after in every segment of the industry. Cattlemen across the country are looking to the Simmental breed to improve growth, maternal traits, and overall red meat yield. With the trend of increased carcass weights and demand for higher quality grading cattle, Simmentals have the traits to help you increase profit and demand.

Let us help you find a bull that will fit your program and needs to improve profit and functionality.

Please join us on February 19th for Lunch at 11:30 with sale to follow at 2 PM.

Thanks for your interest
Tim and Tam Clark
Michael and Jessie Martin
Shane and Kayla Swanson

POWER & GROWTH

Calving Ease

Maternal & Carcass Traits

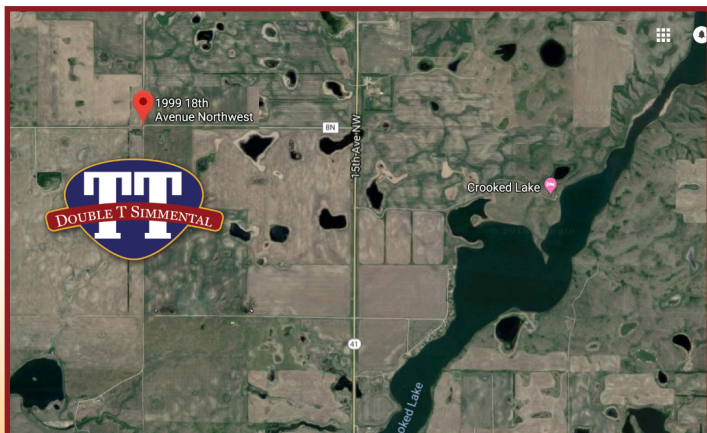


13th Annual Production Sale
Feb. 19th 2022
 At the Ranch, Turtle Lake, ND • 2 p.m. CST

Selling **45** Simmental & SimAngus™ Yearling Bulls
20 Open Heifers
 & The **Elite 8** 4 Elite Breds
 4 Elite Opens

This sale will be broadcast live on the internet.

DVAuction
 Broadcasting Real-Time Auctions
 Real time bidding & proxy bidding available.



Physical Address: 1999 18th St. NW Turtle Lake ND 58575
 Complimentary Lunch will be served from 11:30 to 1:30

Location:

At the Ranch – 11 miles north of Turtle Lake on Hi-way 41 to county road 8N (note: do not take county road 8) then west 3 miles on county road 8N.
From Velva – approximately 25 miles south on Hi-way 41 to county road 8N, 3 miles west on 8N.

Accommodations:

Scotwood Motel, Washburn, ND701-462-8191 (40 mins)
 North Shore Inn, Garrison, ND.....701-463-7202 (30 mins)

Contact information:

Home 701-448-2815
 Tim Cell 701-799-7752
 Tam Cell 701-315-0032

Auctioneer:

Mike Ostrem 701-208-0164

Sale Staff:

Marty Ropp, Allied Genetic Resources 406-581-7835
 Tony Heins 701-400-4435
 Vern Frey 701-721-0344

Farm Visits: Bulls will be available to view at any time prior to sale day. For those who view prior to sale day, will receive a credit of \$100 on a purchase of a bull.

Guarantee: Bulls are guaranteed as breeders; if failing to be satisfactory, they must be reported to us by August 1. Our goal is for each customer to be satisfied; if not we will work with each individual to resolve any issues.

Herd Health: Calves were all vaccinated with 7 way, Bovishield Gold 5, and One Shot in the spring and fall. Bulls will receive 2 shots of Fusogard prior to delivery. Open Heifers will receive spring vaccination of Bovishield 5 VL5 prior to sale date. Bred females have been vaccinated with 2 shots of Scour Guard 4KC along with Virashield VL5 HB.

Semen interest: Double T will retain 1/3 semen interest on all bulls. Selling 2/3 semen interest and full possession.

Wintering: Bulls will be semen tested early April. When the bulls have completed breeding soundness exam we will begin delivering. Bulls being winter here will be charged a fee of \$180 per head at time of purchase; which includes feeding, semen testing, delivery and insurance for 6 months. Free delivery will be limited to 300 miles.

Terms and conditions: All cattle sell under terms and conditions of the American Simmental Association and will be available on request the day of sale.

Risk: Double T Simmentals will not be responsible for any lost or stolen items or liable for any personal injury.

Volume Discount: 3 bulls = 4% discount; 4 bulls = 5% discount; 5 or more bulls = 6% discount



Reference Sire **SAV RAINFALL 6846**
 Sire: COLEMAN CHARLO 0256 MGS: S A V 8180 TRAVELER 004

CE	BW	WW	YW	MCE	ADG	YG	Marb.	REA	API	TI
20	-2.9	76	130	11.1	0.34	0.21	0.88	0.3	159	87

SAV Rainfall 6846 has risen to the top of the Charlo sons as the calving ease sire with muscle, mass and performance. He also leads the pack in disposition and marbling. He was our pick to sample and did not disappoint.

Black Bulls



LOT 1 • TT JESSIE JAMES 647J

Here is a Rainfall that combines it all. A moderate framed bull with all the performance needed in a herd bull. Jessie James displays a tremendous amount of muscle from end to end, along with great volume and capacity. He indexed a 108 for weaning weight and will be one of top yearling weight bulls.

Lot 1 **TT JESSIE JAMES 647J**

BD	Color	%Sim	BW/Ratio	205/Ratio	P/S
2/13/2021	BB	1/2 SM 1/2 AN	90/100	762/108	PP

COLEMAN CHARLO 0256
 S A V RAINFALL 6846
 S A V BLACKCAP MAY 4136
TT JESSIE JAMES 647J Reg #-3924971
 HOOK'S BOZEMAN 8B
 TT MS BOZEMAN 647D
 BTS MS GAMBLER 715T

EPDs	%
CE	16.7
BW	0.2
WW	76.8
YW	121.8
MCE	9.2
Milk	19.7
MWW	58
YG	-0.22
Marb.	0.43
REA	0.82
API	144.3
TI	82.6



LOT 2 • TT JOHNNY RINGO 688J

Lot 2 **TT JOHNNY RINGO 688J**

BD	Color	%Sim	BW/Ratio	205/Ratio	P/S
2/18/2021	BB	1/2 SM 1/2 AN	87/97	642/91	PP

COLEMAN CHARLO 0256
 S A V RAINFALL 6846
 S A V BLACKCAP MAY 4136
TT JOHNNY RINGO 688J Reg #-3925026
 WS EIGHT BALL W114
 TT MS EIGHT BALL 688D
 KSR BLACK BEAUTY

EPDs	%
CE	17.4
BW	1.4
WW	76.2
YW	123.5
MCE	9.8
Milk	29.2
MWW	67.3
YG	-0.12
Marb.	0.42
REA	0.55
API	143.2
TI	81.3

Another Rainfall with a bit more frame and performance. Going to grass he was probably our heaviest bull but right at weaning he became lame, which negatively affected his weaning weight. Johnny Ringo has recovered very well and has outperformed his contemporaries. His dam raised one of our high sellers a year ago and now brings home this stud.



Reference Sire **CLRS GUARDIAN 317G**

Sire: Hook's Beacon MGS: MCM TOP GRADE 018X

CE	BW	WW	YW	MCE	ADG	YG	Marb.	REA	API	TI
17.6	-3	102	154	10.7	0.32	-0.41	0.89		212	119

CLRS Guardian was the high selling bulls at Bred for Balance in 2020. We elected to sample him as the next generation of Beacon sons. Guardian is a unique combination of solid calving ease with tremendous growth opportunity.



LOT 3 • TT JOE COOL 76J

Take note of this blaze faced Guardian son, Joe Cool will gather a number of friends on sale day. We purchased his dam at the Kappes Simmental dispersal last fall. She did a fantastic job her first year out, with him posting a 757-pound adjusted weaning weight with a 107 index in a drought-stricken year.

3 TT JOE COOL 76J

BD	Color	%Sim	BW/Ratio	205/Ratio	P/S
2/9/2021	BB	3/4 SM 1/4 AN	87/105	757/107	PP

HOOK'S BEACON 56B
CLRS GUARDIAN 317G
CLRS ALWAYS XCELLENT

TT JOE COOL 76J Reg #-3925037

KAPPES TRAIL 884 C507

SK MELANIE 110Y B354 G76

KAPPES MELANIE 110Y B354

EPDs	%	
CE	13.5	35
BW	-1.3	25
WW	93.2	5
YW	136.5	15
MCE	7.3	40
Milk	25	35
MWW	71.5	10
YG	-0.36	15
Marb.	0.66	10
REA	1.13	2
API	166.9	5
TI	100.1	1

Lot 4 TT JACK BLACK 721J

BD	Color	%Sim	BW/Ratio	205/Ratio	P/S
2/20/2021	BB	PB SM	84/96	715/101	PP

HOOK'S BEACON 56B
CLRS GUARDIAN 317G
CLRS ALWAYS XCELLENT

TT JACK BLACK 721J Reg #-3925010

HOOK'S BALTIC 17B

TT MS BALTIC 721E

TT MS PROGRESS 421B

EPDs	%	
CE	17.2	2
BW	-2	4
WW	82.7	30
YW	132	20
MCE	10.2	2
Milk	22.8	60
MWW	64.1	40
YG	-0.33	90
Marb.	0.73	1
REA	0.98	30
API	182	1
TI	97.2	3

This Guardian stems from the 421B donor cow, the mother of lots 6,7 and 8. His mother is a Baltic dam going back to 421B. Here is a strong set of numbers with a below average birth weight and exceeding our average weaning weight with a 101 WW index. He ranks in the top 1% for API and top 3% for TI. There is a lot of genetic potential in this low birth weight high growth Guardian son.

Lot 5 TT JORDY 928J

BD	Color	%Sim	BW/Ratio	205/Ratio	P/S
2/20/2021	BB	3/4 SM 1/4 AN	90/107	686/97	PP

HOOK'S BEACON 56B
CLRS GUARDIAN 317G
CLRS ALWAYS XCELLENT

TT JORDY 928J Reg #-3925023

S POWERPOINT WS 5503

TT MS POWERPOINT 928G

TT MS BUBBA 728E

EPDs	%	
CE	13	45
BW	1	65
WW	98.7	2
YW	153.6	3
MCE	8.1	30
Milk	23	50
MWW	72.3	10
YG	-0.34	20
Marb.	0.62	10
REA	1.16	2
API	166.5	5
TI	100	1

A 3/4 blood homo polled and black Guardian out of a super 1/2 blood PowerPoint female. Another great set of numbers follow this guy. He ranks in the top 5% for API and top 1% for TI. Jordy will add great value to your calf crops.



Reference Sire **HOOK'S EAGLE 6E**

Sire: HOOK'S BLACK HAWK 50B MGS: GW-WBF SUBSTANCE 820Y

CE	BW	WW	YW	MCE	ADG	YG	Marb.	REA	API	TI
14	-2	102	162	6.3	0.37	-0.35	0.55	1.27	168	104

Hook's Eagle has gained popularity each and every year. We were lucky enough to get some semen in 2020. Eagle provides negative birth weight EPD's with top 1% growth EPDs. The Eagle offspring have great value and will add significant profit.



LOT 6 • TT JOE MONTANA 672J

Lot **6** **TT JOE MONTANA 672J**

BD	Color	%Sim	BW/Ratio	205/Ratio	P/S
2/25/2021	BB	5/8 SM 3/8 AN	84/	735/	PP

HOOK'S BLACK HAWK 50B
HOOK'S EAGLE 6E
HOOK'S CRYSTAL 1C

TT JOE MONTANA 672J Reg #: 3925051
G A R PROGRESS
TT MS PROGRESS 421B
TT MS EIGHTBALL 221Z

EPDs	%
CE	16 15
BW	-2 15
WW	80.5 35
YW	127.3 30
MCE	8.9 20
Milk	25.9 25
MWW	66.1 25
YG	-0.28 35
Marb.	0.83 3
REA	0.91 15
API	170.7 4
TI	98.2 2

Lot 6, 7 and 8: A great flush of Eagle sons here out of the 421B donor cow. This group have the potential to be heifer bull candidates with top 30% in growth. They rank in the top 4% for API and top 2% for TI. Moderate framed, deep bodied and thick made they will add great value to your calf crops.

Lot **7** **TT JOE SCHMO 714J**

ASA#	BD	Color	%Sim	BW/Ratio	205/Ratio	P/S
-3925056	2/21/2021	BB	5/8 SM 3/8 AN	88/	641/	PP

EPDs	CE	BW	WW	YW	MCE	Milk	MWW	YG	Marb.	REA	API	TI
% EPDs	16.1	-1.8	81.8	123.7	8.8	25.9	66.7	-0.3	0.83	0.79	169.3	98.6
%	15	20	30	35	20	25	20	30	3	30	4	2

Lot **8** **TT JJ 104J**

ASA#	BD	Color	%Sim	BW/Ratio	205/Ratio	P/S
-3925053	2/24/2021	BB	5/8 SM 3/8 AN	81/	583/	HP

EPDs	CE	BW	WW	YW	MCE	Milk	MWW	YG	Marb.	REA	API	TI
% EPDs	18.7	-3.6	67.5	103.1	10	25.9	59.6	-0.26	0.82	0.67	177.6	91.9
%	3	5	80	80	10	25	55	45	3	50	2	10



LOT 9 • TT JETTI 633J

Lot **9** **TT JETTI 633J**

BD	Color	%Sim	BW/Ratio	205/Ratio	P/S
2/22/2021	BB	PB SM	90/102	694/98	PP
HOOK'S BLACK HAWK 50B					
HOOK'S EAGLE 6E					
HOOK'S CRYSTAL 1C					
TT JETTI 633J Reg #-3924967					
TT COOPER 36Z					
TT MS COOPER 633D					
TT MS SUBSTANCE 433B					

EPDs	%
CE	14.2
BW	-0.5
WW	86.1
YW	136.6
MCE	6.9
Milk	22.1
MWW	65.2
YG	-0.35
Marb.	0.45
REA	0.88

633J is out of a up and coming Cooper daughter that has performed well. This homo polled and black Eagle son has grades in the top 4% for both API and TI. Don't miss him on sale day, he is made right and super complete in all aspects of the beef industry.

API	TI
166.5	4
94.7	4



LOT 10 • TT JOHN WAYNE 681J

Lot **10** **TT JOHN WAYNE 681J**

BD	Color	%Sim	BW/Ratio	205/Ratio	P/S
2/16/2021	BB	3/4 SM 1/4 AN	85/96	771/109	PP
HOOK'S BLACK HAWK 50B					
HOOK'S EAGLE 6E					
HOOK'S CRYSTAL 1C					
TT JOHN WAYNE 681J Reg #-3924967					
TT COOPER 36Z					
TT MS COOPER 681D					
TT MS EIGHTBALL 486B					

EPDs	%
CE	16.2
BW	-1.4
WW	78.1
YW	121.6
MCE	7.5
Milk	31
MWW	70
YG	-0.29
Marb.	0.39
REA	0.8

Pay attention here pilgrim, this powerhouse Eagle son has all the bells and whistles. Another Cooper daughter making a statement. John Wayne is a top performer with a weaning index of 109, tallying a 771, 205 adjusted weight. He will certainly add pay weight to your calf crops.

API	TI
162.4	10
90	10

Watch & Bid online for FREE at

DVAuction
Broadcasting Real-Time Auctions



Can't make the sale? Bid from home with DV Auction's "real-time" internet bidding service! Buying online is as easy as 1, 2, 3...

1. Create an account at www.dvauction.com under the "register" tab.
2. Apply for bidding approval by clicking on the "details" tab at least 24 hours prior to the auction - a DV representative will notify you once you have been approved.
3. Tune in for the sale and make your purchases!

After the sale, contact the sale manager or owner to arrange transportation and payment. **High speed internet** is required for successful bidding – be sure to check the lag-time monitor in the top left corner to ensure real-time broadcasts.

Proxy Bidding: If you can't make time to watch the sale, register a proxy bid and let our system represent your bid while you're away. Look for the "proxy bid" tab on the auction listing and fill in your maximum bids. We'll handle the rest!

Having troubles? During the auction, you can type a message to the operator at any time for assistance. Our full-time support team can also always be reached at (402) 474-5557.



Reference Sire **TJ GOLD 274G**

Sire: HOOK'S EAGLE 6E MGS: CCR SANTA FE 9349Z

CE	BW	WW	YW	MCE	ADG	YG	Marb.	REA	API	TI
17.5	-2.6	84	133	9	0.31	-0.28	0.42	0.82	171	96

TJ Gold was high selling bull in Triangle J's 2020 sale and was our pick to sample of the Eagle sons from that year. The Gold's have been very impressive and accepted from the early results of offspring sold. They are moderate framed and big middle with tons of mass and muscle.



LOT 11 • TT JACK OF ALL TRADES



LOT 12 • TT JAKE 999J

Lot **11** **TT JACK OF ALL TRADES**

BD	Color	%Sim	BW/Ratio	205/Ratio	P/S
2/16/2021	BB	PB SM	84/95	749/106	PP

HOOK'S EAGLE 6E
 TJ GOLD 274G
 TJ 12C
 TT JACK OF ALL TRADES Reg #-3924999
 TT PROGRESS 215B
 TT MS PROGRESS 614D
 TT MS SUBSTANCE 414B

EPDs	%	
CE	19.4	1
BW	-3.4	1
WW	73.8	65
YW	118.2	45
MCE	10.9	1
Milk	27.6	25
MWW	64.5	40
YG	-0.24	99
Marb.	0.62	1
REA	0.7	90
API	178	1
TI	95.4	4

This purebred Gold son is one of our highest API bulls with a 178 ranking in the top 1%. He is the Jack of All Trades and can do it all. Comes out of an elite TT Progress daughter, who are beginning to make their mark. A heifer bull prospect with a 106-weaning index.

Lot **12** **TT JAKE 999J**

BD	Color	%Sim	BW/Ratio	205/Ratio	P/S
2/17/2021	BR	PB SM	76/93	695/98	PP

HOOK'S EAGLE 6E
 TJ GOLD 274G
 TJ 12C
 TT JAKE 999J Reg #-3924998
 TT ELITE 610E
 TT MS ELITE 999G
 TT MS RED ZONE 699D

EPDs	%	
CE	14.1	15
BW	1.1	40
WW	82.9	30
YW	128.5	25
MCE	6.7	35
Milk	27.2	25
MWW	68.6	25
YG	-0.38	75
Marb.	0.6	2
REA	0.88	50
API	170.2	3
TI	94.9	4

A hetero black Gold son out of a first calf heifer. 999J is a heifer bull prospect that ranks in the top 3% for API. A low birth weight bull that has a lot of genetic merit to add value to your calf crop.

Lot **13** **TT JACK REACHER 295J**

BD	Color	%Sim	BW/Ratio	205/Ratio	P/S
2/16/2021	BB	PB SM	87/98	592/84	PP

HOOK'S EAGLE 6E
 TJ GOLD 274G
 TJ 12C
 TT JACK REACHER 295J Reg #-3924948
 HOOKS SHEAR FORCE 38K
 KNH HAZEL 295Y
 KS MISS 004 U295

EPDs	%	
CE	17.1	2
BW	-2.2	4
WW	61.2	99
YW	87.9	99
MCE	8.2	15
Milk	29.5	15
MWW	60	65
YG	-0.27	99
Marb.	0.45	5
REA	0.65	95
API	161.3	10
TI	81.5	35

Jack Reacher comes from a long-time performer, KNH Hazel, we purchased at the ND State Sale 10 years ago. She is still producing great one's year after year. This Gold son is homo polled and black who will add profit and value to your calf crops.

Lot **14** **TT JOE DIRT 824J**

BD	Color	%Sim	BW/Ratio	205/Ratio	P/S
2/20/2021	BB	PB SM	74/87	632/90	PP

HOOK'S EAGLE 6E
 TJ GOLD 274G
 TJ 12C
 TT JOE DIRT 824J Reg #-3924955
 TT DYNAMIC 495D
 TT MS DYNAMIC 824F
 TT MS PROGRESS 421B

EPDs	%	
CE	15.8	5
BW	-3.9	1
WW	68.2	90
YW	104.5	75
MCE	8.5	10
Milk	27.8	20
MWW	61.8	55
YG	-0.28	99
Marb.	0.45	5
REA	0.65	95
API	164.5	4
TI	87.9	15

Here is a real head turner. This Gold son is going back to the 421B donor female. His Mother had one of the highlight Black Hawks in last years sale. Joe Dirt is a big-time calving ease bull with added growth. He is moderate framed with thick top and deep sweeping rib and will add volume and fleshing ability to daughters, along with pounds and performance to his steers.

Lot **15** **TT JOHN HANCOCK 804J**

BD	Color	%Sim	BW/Ratio	205/Ratio	P/S
2/13/2021	BB	PB SM	77/90	719/102	PP
HOOK'S EAGLE 6E					
TJ GOLD 274G					
TJ 12C					
TT JOHN HANCOCK 804J Reg #-3924951					
IR PROSPECTOR C870					
TT MS PROSPECTOR 804F					
TT MS COOPER 604D					

EPDs		%
CE	16.5	3
BW	-1.6	10
WW	78.3	50
YW	130	25
MCE	8.7	10
Milk	30.8	10
MWW	69.9	20
YG	-0.34	90
Marb.	0.4	10
REA	1.04	20
API	168.8	3
TI	91.4	10

Looking for a homo polled and black heifer bull, here is an excellent candidate. He had an actual birth weight of 77 and posted a 719-weaning weight with an index of 102. He ranks in the top 3% for calving ease and top 5% for birth weight.



LOT 16 • TT JAMISON 892J



LOT 17 • TT JIMMY MACK 871J

Reference Sire **HOOK'S BLACK HAWK 50B**

Sire: HOOK'S XAVIER 14X MGS: HOOK'S QUEST 86U

CE	BW	WW	YW	MCE	ADG	YG	Marb.	REA	API	TI
17.2	-2.9	88	137	9.2	0.31	-0.34	0.29	1.5	159	90

Hook's Black Hawk is a calving ease bull with the extra performance everyone is looking for. Black Hawk is the smooth sided, deep bodied, moderate sized, sound footed bull you might expect from his pedigree.

Reference Sire **GW PTO 536D**

Sire: GW PTO 345B MGS: LBR GOLD DIGGER W524

CE	BW	WW	YW	MCE	ADG	YG	Marb.	REA	API	TI
12.3	0.8	73	136	6.8	0.39	-0.1	0.25	0.25	162	86

GW PTO 536D was our pick of the purebred bulls at the Gateway sale in 2017. He is moderate framed and very easy fleshing. He has passed that on to his females. Combines a complete package of calving ease, power, and carcass.

Lot **16** **TT JAMISON 892J**

BD	Color	%Sim	BW/Ratio	205/Ratio	P/S
3/10/2021	BR	PB SM	89/104	751/106	PP
GW PTO 345B					
GW PTO 536D					
GW MISS GOLD DIGGER 582A					
TT JAMISON 892J Reg #-3924901					
TT FIREBALL 280B					
TT MS FIREBALL 892F					
TT MS ATLANTIC 692D					

EPDs		%
CE	12.5	30
BW	0.9	35
WW	74.1	65
YW	125.5	30
MCE	7.6	20
Milk	24.5	45
MWW	61.5	55
YG	-0.06	99
Marb.	0.32	15
REA	0.21	99
API	134.2	40
TI	77.1	55

Jamison is a PTO son that is a stout, thick and massive. He is optimum frame with added muscle and growth. This homo polled powerhouse will increase value in his calf crops. Don't miss this PTO son.

Lot **17** **TT JIMMY MACK 871J**

BD	Color	%Sim	BW/Ratio	205/Ratio	P/S
3/10/2021	BB	3/4 SM 1/4 AN	87/100	731/104	PP
GW PTO 345B					
GW PTO 536D					
GW MISS GOLD DIGGER 582A					
TT JIMMY MACK 871J Reg #-3924936					
S A V FINAL ANSWER 0035					
TT MS ANSWER 871F					
TT MS BOZEMAN 671D					

EPDs		%
CE	14.6	25
BW	1.8	80
WW	84.1	20
YW	137.8	15
MCE	8.3	25
Milk	23.9	40
MWW	65.9	25
YG	-0.16	75
Marb.	0.31	50
REA	0.45	85
API	140.1	35
TI	82.3	35

Check out this 3/4 blood homo polled and black PTO son, out of a Final Answer daughter. He tallied a 104-weaning index. Jimmy Mack comes with a very balanced set of numbers that will add great genetic merit. He will sire big bodied thick stout calves that will demand premiums on sale day.

Lot **18** **TT JAGGER 918J**

BD	Color	%Sim	BW/Ratio	205/Ratio	P/S
2/16/2021	BB	3/4 SM 1/4 AN	70/85	735/104	PP
HOOK'S XAVIER 14X					
HOOK'S BLACK HAWK 50B					
HOOK'S YVETTE 100Y					
TT JAGGER 918J Reg #-3924928					
HOOK'S BEACON 56B					
TT MS BEACON 918G					
TT MS TEN X 718E					

EPDs		%
CE	21.5	1
BW	-4	4
WW	74.4	55
YW	113.5	60
MCE	12.7	1
Milk	24.2	40
MWW	61.3	45
YG	-0.28	35
Marb.	0.4	35
REA	1.2	1
API	169.8	4
TI	86.3	20

Study this one closely, this homo polled and black, Black Hawk son is a heifer bull candidate. He ranks in the top 1% for calving ease, the top 4% for birth weight. A unique combo of top calving ease and growth in one package. Jagger is out of a first calve Beacon daughter that did a fantastic job.



Reference Sire **SFG COWBOY LOGIC D627**

Sire:CCR COWBOY CUT 5048Z MGS: MCM TOP GRADE 018X

CE	BW	WW	YW	MCE	ADG	YG	Marb.	REA	API	TI
16.4	0.7	104	162	9.8	0.36	-0.26	0.41	0.89	162	103

SFG Cowboy Logic is another new addition to the sire lineup. We have had continued requests for baldie bulls from customers and decided to try and fill those requests. Logic was our choice as a sire to complete that task. We were excited with the number of baldies, but more importantly have been extremely impressed with the performance of his offspring.



LOT 19 • TT JOE BLOW 318J

Lot **19** **TT JOE BLOW 318J**

BD	Color	%Sim	BW/Ratio	205/Ratio	P/S
2/18/2021	BR	PB SM	91/102	800/113	PP

CCR COWBOY CUT 5048Z
SFG COWBOY LOGIC D627
SFG QUEEN B01

TT JOE BLOW 318J Reg #-3924981

RFS RED IRON T20
TT MS RED IRON 318A
TT MS GUNNER 910U

EPDs		%
CE	13.2	20
BW	0.4	25
WW	88.9	15
YW	129	25
MCE	7.4	25
Milk	23.4	55
MWW	67.8	25
YG	-0.35	85
Marb.	0.17	40
REA	0.9	45

Here is a ranch favorite from early on. This Cowboy Logic baldie puts it all in one package. Joe Blow is not any average JOE but big, deep, and thick. Check out his numbers, he ranks in the top 15% for WW growth. Tallied an 800 pounds adjusted weight and indexed 113.



LOT 20 • TT JOHNNY CASH 215J

Lot **20** **TT JOHNNY CASH 215J**

BD	Color	%Sim	BW/Ratio	205/Ratio	P/S
2/23/2021	BR	PB SM	90/102	684/97	PP

CCR COWBOY CUT 5048Z
SFG COWBOY LOGIC D627
SFG QUEEN B01

TT JOHNNY CASH 215J Reg #-3924940

HOOKS SHEAR FORCE 38K
TT MS FORCE 215Z
TT MS MAJORITY 045X

EPDs		%
CE	17.6	2
BW	-2.1	4
WW	73.2	70
YW	105	75
MCE	10.8	1
Milk	26.1	30
MWW	62.7	50
YG	-0.32	95
Marb.	0.36	10
REA	0.78	75

Another Logic baldy, 215J a lot to Johnny Cash in his frame that is a big volume bull. His mother has been a big-time producer for years. She is the mother to TT Progress who continues to be used here at Double T.

API	161.9	5
TI	86.3	20





LOT 21 • TT JACKSON 428J

Lot **21 TT JACKSON 428J**

BD 2/25/2021 Color BB %Sim PB SM BW/Ratio 90/100 205/Ratio 671/95 P/S PP

CCR COWBOY CUT 5048Z
 SFG COWBOY LOGIC D627
 SFG QUEEN B01
 TT JACKSON 428J Reg #-3924926
 TT COOPER 36Z
 TT MS COOPER 428B
 BTS ON TRACK 108Y

EPDs		%
CE	15.1	10
BW	-0.2	20
WW	78.1	50
YW	120.7	40
MCE	8	15
Milk	26.7	30
MWW	65.7	35
YG	-0.43	50
Marb.	0.32	15
REA	0.91	45

A tremendous bull with a ton of potential. His pedigree runs deep, a direct son of Logic and out of a TT Cooper daughter that has been a super cow here for years. Jackson's mother is the granddam of our State Sale heifer this year that was the high selling female going to Rydeen Farms. 428J ranks in the top 20% for API and top 20% for TI.

API	148.5	20
TI	87	20



LOT 22 • TT JOE MILLIONAIRE 553J

Lot **22 TT JOE MILLIONAIRE 553J**

BD 2/19/2021 Color BB %Sim PB SM BW/Ratio 89/100 205/Ratio 667/94 P/S PP

CCR COWBOY CUT 5048Z
 SFG COWBOY LOGIC D627
 SFG QUEEN B01
 TT JOE MILLIONAIRE 553J Reg #-3924952
 HOOKS ATLANTIC 18A
 TT MS ATLANTIC 553C
 KSR MS DEX 850T

EPDs		%
CE	14.1	15
BW	-1.3	10
WW	79.7	40
YW	121.2	40
MCE	9.7	3
Milk	22.5	60
MWW	62.3	50
YG	-0.36	80
Marb.	0.08	60
REA	0.94	40

Joe Millionaire is another super made Cowboy Logic son that stems from a wonderful Atlantic female. This homo polled and black baldy son has all the pieces and potential. He will add performance, pounds, and profit to your calf crops.

API	134.4	40
TI	82.4	30



Lot **23 TT JIM BEAM 851J**

BD 3/2/2021 Color BB %Sim PB SM BW/Ratio 87/102 205/Ratio 766/109 P/S PP

CCR COWBOY CUT 5048Z
 SFG COWBOY LOGIC D627
 SFG QUEEN B01
 TT JIM BEAM 851J Reg #-3924988
 GW PTO 536D
 TT MS PTO 851F
 TT MS COOPER 441B

EPDs		%
CE	16.9	2
BW	0.6	30
WW	83.3	30
YW	133.1	20
MCE	9.5	4
Milk	25.6	35
MWW	67.2	30
YG	-0.24	99
Marb.	0.23	25
REA	0.75	80

Jim Beam is a powerhouse who indexed 109 on weaning and tallied a 766 adjusted weaning weight. Ranks in the top 30% for weaning weight EPD and Top 20% for yearling weight. All of that, with top 15% API and 20% TI ranking.

API	150.3	15
TI	86.3	20

This sale will be broadcast live on the internet.

DVAuction
 Broadcasting Real-Time Auctions

Real time bidding & proxy bidding available.



Reference Sire **TJ FRANCHISE 451D**
Sire: CCR COWBOY CUT 5048Z MGS: S A V NET WORTH 4200

CE	BW	WW	YW	MCE	ADG	YG	Marb.	REA	API	TI
12.3	1.8	79	120	6.1	0.26	0.03	0.38	0.37	134	79

TJ Franchise is a ½ blood sire out of Cowboy Cut that will add body, mass and performance. He is a sire that will improve feet and udder quality in his offspring.



LOT 24 • TT JERRY JEFF 752J

Lot **24 TT JERRY JEFF 752J**

BD	Color	%Sim	BW/Ratio	205/Ratio	P/S
2/9/2021	BB	1/2 SM 1/2 AN	101/114	656/93	PP

CCR COWBOY CUT 5048Z
TJ FRANCHISE 451D
TJ MISS NET WORTH U11
TT JERRY JEFF 752J Reg #-3924917
S A V BRUISER 9164
TT MS BRUISER 752E
TT MS COOPER 452B

EPDs		%
CE	11.3	65
BW	3.1	95
WW	83.2	25
YW	128.8	25
MCE	5.8	70
Milk	18.2	90
MWW	59.8	55
YG	-0.07	95
Marb.	0.25	65
REA	0.48	80
API	118.3	75
TI	76.6	60

Look into this ½ blood homo polled and black Franchise son. This genetic powerhouse comes out of a young SAV Bruiser daughter that is going to be heard of more in the future. He is deep sided and full of volume and muscle. A half blood you won't want to miss.

Lot **25 TT JASPER 859J**

BD	Color	%Sim	BW/Ratio	205/Ratio	P/S
2/21/2021	BB	1/2 SM 1/2 AN	103/119	693/98	PP

CCR COWBOY CUT 5048Z
TJ FRANCHISE 451D
TJ MISS NET WORTH U11
TT JASPER 859J Reg #-3924908
MAR INNOVATION 251
TT MS INNOVATION 859F
TT DREAM GIRL 859T

EPDs		%
CE	8.7	90
BW	4.4	99
WW	92.7	5
YW	144.1	10
MCE	5.1	80
Milk	19.7	80
MWW	66	25
YG	-0.1	90
Marb.	0.24	65
REA	0.72	40
API	116.2	80
TI	80.7	40

Another ½ blood TJ Franchise cow bull that has a bit more frame. Look for this guy to add more frame and stretch to his calf crops. He falls in the top 5% for weaning EPD and top 10% for Yearling weight.

Lot **26 TT JUGGERNAUT 669J**

BD	Color	%Sim	BW/Ratio	205/Ratio	P/S
2/24/2021	BR	1/2 SM 1/2 AN	71/79	633/90	PP

CCR COWBOY CUT 5048Z
TJ FRANCHISE 451D
TJ MISS NET WORTH U11
TT JUGGERNAUT 669J Reg #-3924975
S A V FINAL ANSWER 0035
KINNS MS ANSWER 669D
BTS MS IRON 4105B

EPDs		%
CE	17.8	5
BW	-2.8	10
WW	66.8	85
YW	93	95
MCE	10.5	5
Milk	21.1	70
MWW	54.5	80
YG	-0.06	95
Marb.	0.53	20
REA	0.16	99
API	155.7	15
TI	81.1	40

This TJ Franchise comes from a big stout Final Answer daughter who was high selling female at the ND State sale a few years back from Kinn Simmentals. Juggernaut follows his mother in being thick, massive, and stout. He will add that to your calf crops as well.



Reference Sire **W/C LOCK DOWN 206Z**
Sire: REMINGTON LOCK N LOAD54U MGS: IRONWOOD NEW LEVEL

CE	BW	WW	YW	MCE	ADG	YG	Marb.	REA	API	TI
13.9	-1.6	85	134	9	0.3	0	0.4	0.57	136	88

W/C Lockdown is a calving ease sire that will add look, style and dimension to his calves.



LOT 27 • TT JAMES DEAN 4J

James Dean is a different package here on this ½ blood. This Lockdown son has been a standout from early on. We purchase his mother as a bred heifer in the Kappes dispersal sale last fall. This Barstow Cash daughter excelled on her first time out. We look forward to what she will do in the future. 4J performed extremely well tipping the scales at 738 with and index of 104 for weaning. He continues to perform extremely well throughout the winter.

Lot **27 TT JAMES DEAN 4J**

BD	Color	%Sim	BW/Ratio	205/Ratio	P/S
2/5/2021		1/2 SM 1/2 AN	77/93	738/105	PP

REMINGTON LOCK N LOAD54U
W/C LOCK DOWN 206Z
G C F MISS NEW LEVELR206

TT JAMES DEAN 4J Reg #-3925038
BARSTOW CASH
SK E FORCE A633 G4
SK E FORCE A633 E183

EPDs		%
CE	10.7	75
BW	1.1	65
WW	81.4	30
YW	126.8	30
MCE	6.9	50
Milk	23.6	45
MWW	64.2	35
YG	-0.08	90
Marb.	0.33	45
REA	0.55	70
API	131.4	50
TI	80.5	40

Reference Sire **WS PROCLAMATION E202**
Sire: CCR COWBOY CUT 5048Z MGS: CLRS GRADE-A 875 A

CE	BW	WW	YW	MCE	ADG	YG	Marb.	REA	API	TI
12.6	0.4	100	146	9	0.29	-0.27	0.52	0.91	166	104

Eye-appealing progeny exhibit tremendous performance, extra body mass, natural muscle plus great feet and legs. His daughters are attractive-fronted females with excellent volume and are destined to make awesome cows.



LOT 28 • TT JOURNEY 869J

Lot **28 TT JOURNEY 869J**

BD	Color	%Sim	BW/Ratio	205/Ratio	P/S
3/3/2021	BR	PB SM	91/106	723/102	PP

CCR COWBOY CUT 5048Z
WS PROCLAMATION E202
WS MISS SUGAR C4

TT JOURNEY 869J Reg #-3924927
HOOK'S BEACON 56B
TT MS BEACON 869F
KINNS MS ANSWER 669D

EPDs		%
CE	12	35
BW	1.3	45
WW	97	4
YW	151.4	3
MCE	9.1	10
Milk	31.8	10
MWW	80.3	2
YG	-0.28	99
Marb.	0.55	2
REA	1.06	15
API	167.7	3
TI	101.9	1

The Journey has just begun so pay attention here on the Proclamation son. Journey is our only Proclamation this year. He stems from a sweet Beacon daughter that goes back to the mother of lot 26. He profiles with a great set of numbers from end to end. Negative birth weight EPD while having top 10% weaning EPD. Topping that he ranks at 2% for API and 1% for TI.

Reference Sire **SC PAY THE PRICE C11**

Sire: CNS PAYS TO DREAM T759 MGS: GWS EBONY'S TRADEMARK 6N

CE	BW	WW	YW	MCE	ADG	YG	Marb.	REA	API	TI
7.4	2.8	80	116	4.9	0.22	-0.45	0.13	1.03	116	78

SC Pays the Price is the sire of the group of embryos we purchased. We were 3 for 3 on the embryos and all bulls. Lucky for you, these are a great set of sons that will sire some great calves.



LOT 29 • TT JACK FLASH 723J

Lots 29, 30 and 31: A set of embryo bulls that are an exciting group. Embryos we purchased sired by Pay the Price, going back to the famous Donna cow from Shoal Creek. 2 blaze face and one solid black, each a bit different. Jack Flash is solid black with that extra eye appeal and stoutness. He has been a head turner from the beginning. Lot 30 and 31 are blaze faced that are super correct with flash and style.

Lot **29 TT JACK FLASH 723J**

BD	Color	%Sim	BW/Ratio	205/Ratio	P/S
2/28/2021	BB	PB SM	110/	838/	Scurred

CNS PAYS TO DREAM T759
 SC PAY THE PRICE C11
 LLSF URABABYDOLL U194
 TT JACK FLASH 723J Reg #-3925048
 REMINGTON LOCK N LOAD54U
 SANDEEN DONNA 4532
 SANDEEN DONNA 8386

EPDs		%
CE	9.1	75
BW	3.2	85
WW	83	30
YW	128.3	25
MCE	5.6	55
Milk	20.7	75
MWW	62.2	50
YG	-0.37	80
Marb.	0.03	75
REA	0.89	50
API	115.1	85
TI	76.7	55



LOT 31 • TT JU JU 855J

Lot **30 TT JUPITER 810J**

ASA#	BD	Color	%Sim	BW/Ratio	205/Ratio	P/S
-3925046	2/26/2021	BB	PB SM	86/	623/	PP

% EPDs	CE	BW	WW	YW	MCE	Milk	MWW	YG	Marb.	REA	API	TI
9.5	-1.9	56.4	78.9	5.5	20.7	48.9	-0.42	0.12	0.99	122.2	68.6	
70	5	99	99	55	75	99	55	50	30	70	90	

Lot **31 TT JU JU 855J**

ASA#	BD	Color	%Sim	BW/Ratio	205/Ratio	P/S
-3925047	2/27/2021	BB	PB SM	89/	858/	PP

% EPDs	CE	BW	WW	YW	MCE	Milk	MWW	YG	Marb.	REA	API	TI
8.1	0.4	82.1	127	4.8	20.7	61.8	-0.25	0.04	0.53	118.6	78.9	
85	25	35	25	70	75	55	99	70	99	75	45	

Reference Sire **HOOK'S GUIDE LINE 97G**
 Sire: CDI MAINLINE 265D MGS: HOOKS SHEAR FORCE 38K

CE	BW	WW	YW	MCE	ADG	YG	Marb.	REA	API	TI
9.9	1.5	81	130	5.2	0.31	-0.26	0.24	0.96	144	84

Hook's Guideline is our newest Jr. herdsire. He is a deep bodied, stout, easy fleshing Mainline son we selected at Bred for Balance sale. He will add thickness and fleshing ability to his sons and daughters. We will be retaining a number of these heifers for our own use.



LOT 32 • TT JARRETT 783J

Lot **32** **TT JARRETT 783J**

BD	Color	%Sim	BW/Ratio	205/Ratio	P/S
3/14/2021	BR	PB SM	93/106	726/103	PP

CDI MAINLINE 265D
 HOOK'S GUIDE LINE 97G
 HOOK'S DACIA 14D
TT JARRETT 783J Reg #-3925004
 IR PLATINUM Z652
 TT MS PLATINUM 783E
 TT MS FREE 383A

783J is out of our Jr herd sire Hook's Guideline. His first calf crop has been impressive. We have several daughters we have retained. His mother has done a super job so far, her first bull went to Bata Bros, her second calf will calve for us this spring.

EPDs	%	
CE	10.4	60
BW	-1.3	10
WW	70.7	80
YW	106.2	75
MCE	6.3	40
Milk	25.4	35
MWW	60.7	60
YG	-0.32	95
Marb.	0.16	40
REA	0.8	70
API	145.8	20
TI	78	50

Lot **33** **TT JOKER 953J**

BD	Color	%Sim	BW/Ratio	205/Ratio	P/S
2/23/2021	BB	PB SM	88/106	710/101	PP

CLRS AFTER SHOCK 604 A
 CLRS DIVIDEND 405D
 CLRS BONNIA 405 B
TT JOKER 953J Reg #-3925002
 CDI MAIN ATTRACTION 259D
 TT MS ATTRACTION 953G
 TT MS ATLANTIC 553C

New genetics here with this Homo polled and black Pure-bred Dividend. Note the EPD profile on this guy. He indexed 106 on birth weight and 101 on weaning. Out of a first calf heifer and grand dam is the mother to lot 22. A solid cow family behind this bull.

EPDs	%	
CE	9.9	65
BW	1.8	55
WW	82.5	30
YW	120.1	40
MCE	4.7	70
Milk	18.3	90
MWW	59.5	65
YG	-0.33	90
Marb.	0.15	40
REA	0.82	65
API	132.7	45
TI	80.4	40

Lot **34** **TT JOLLY 907J**

BD	Color	%Sim	BW/Ratio	205/Ratio	P/S
2/16/2021	BR	1/2 SM 1/2 AN	82/98	859/122	PP

V A R DISCOVERY 2240
 MGR TREASURE
 SJH IMPRESSION OF 6108 1614
TT JOLLY 907J Reg #-3924995
 CDI MAIN ATTRACTION 259D
 TT MS ATTRACTION 907G
 TT MS FORCE 005X

Look up this 1/2 blood on sale day. 859 205 adjusted weaning weight with 122 index. Come with top 20% growth along with top 20% API and top 5% TI.

EPDs	%	
CE	14.2	30
BW	-3.3	10
WW	84	20
YW	134.1	20
MCE	11	4
Milk	21.6	65
MWW	63.6	35
YG	-0.16	75
Marb.	0.56	15
REA	0.71	45
API	149.7	20
TI	94.1	5

Lot **35** **TT JARVIS 980J**

BD	Color	%Sim	BW/Ratio	205/Ratio	P/S
2/19/2021	BR	3/4 SM 1/4 AR	81/97	630/89	PP

NICHOLS LEGACY G151
 HOOKS SHEAR FORCE 38K
 C&D TRACY
TT JARVIS 980J Reg #-3924919
 H2R PROFITBUILDER B403
 TT MS PROFITBUILDER 980G
 TT MS RED ZONE 780E

980J is a hetero black 3/4 blood out of the old-time favorite Shear Force. Heifer bull prospect with a negative 1.6 BW EPD. If a heifer bull is what you need, look no further than here.

EPDs	%	
CE	16	15
BW	-1.6	20
WW	59.2	95
YW	83.9	99
MCE	9.2	15
Milk	25.6	30
MWW	55.2	80
YG	-0.4	10
Marb.	0.32	50
REA	0.81	25
API	141.9	30
TI	71.8	80

Red Bulls



Reference Sire **CDI HOMETOWN 246A**

Sire: GW REDESTINED 642X MGS: NF TRUMP S582

CE	BW	WW	YW	MCE	ADG	YG	Marb.	REA	API	TI
4.8	5.2	103	158	1.8	0.34	-0.57	0.31	1.32	131	94

CDI Hometown has been around for a some time now and continues to be the go to bull for extra performance and muscle. We used him on some of our half blood females to make ¾ bloods and maintain a more moderate frame. Hometown certainly adds that extra growth kick and mass.



LOT 36 • TT JETHRO 176J



LOT 37 • TT JACK DANIELS 845J

Lot **36** **TT JETHRO 176J**

BD	Color	%Sim	BW/Ratio	205/Ratio	P/S
2/24/2021	R	3/4 SM 1/4 AR	92/103	831/118	PP

GW REDESTINED 642X
 CDI HOMETOWN 246A
 CDI MS TRUMP 86U
TT JETHRO 176J Reg #-3924934
 SCHULER REBEL 0029X
 KS MISS REBEL D176
 KS BETTE B800

EPDs		%
CE	7.3	99
BW	1.5	75
WW	96.6	3
YW	147.6	5
MCE	3.2	95
Milk	31.8	4
MWW	80.1	1
YG	-0.34	20
Marb.	0.62	10
REA	0.99	10
API	149.3	20
TI	97.9	2

Jethro is the full meal deal here. Examine the performance and pedigree on this one. This Hometown standout combines it all. 831-pound 205 adjusted weight with 118 index. 96 WW EPD and 148 YW EPD which rank in the top 3 and 5%. Out of an awesome Rebel daughter we purchased from Kenner Simmentals.

Lot **37** **TT JACK DANIELS 845J**

BD	Color	%Sim	BW/Ratio	205/Ratio	P/S
2/26/2021	R	3/4 SM 1/4 AR	96/111	724/103	PP

GW REDESTINED 642X
 CDI HOMETOWN 246A
 CDI MS TRUMP 86U
TT JACK DANIELS 845J Reg #-3924945
 OOO SIR LOIN 5122
 TT MS SIRLOIN 845F
 TT MS RED ZONE 645D

EPDs		%
CE	5	99
BW	3.4	99
WW	92.4	10
YW	147.1	5
MCE	2.7	99
Milk	20.5	75
MWW	66.6	25
YG	-0.32	25
Marb.	0.37	40
REA	0.93	15
API	126.9	60
TI	85.3	25

Another ¾ blood Hometown that goes back to a sweet made Sirloin female with a bright future. Ranks in the top 5% for growth traits of weaning and yearling. Jack Daniels packs a ton of weight in a small package. This guy is a moderate framed bull full of meat and muscle. If you want to add pounds, you will find it here.



LOT 38 • TT JUMBO 498J

Lot **38** **TT JUMBO 498J**

BD	Color	%Sim	BW/Ratio	205/Ratio	P/S
2/19/2021	R	3/4 SM 1/4 AR	100/112	882/125	PP

GW REDESTINED 642X
 CDI HOMETOWN 246A
 CDI MS TRUMP 86U

TT JUMBO 498J Reg #-3925025

HXC CONQUEST 4405P
 TT MS CONQUEST 498B
 TT MS TJ 895T

EPDs	%
CE	5.6 99
BW	3.9 99
WW	99.6 2
YW	150.5 4
MCE	3.6 95
Milk	29.2 10
MWW	79 2
YG	-0.48 2
Marb.	0.37 40
REA	1.2 1

Jumbo is the weaning weight leader and rightfully named. A homo polled 3/4 blood Hometown again. Jumbo is a larger framed big-time performer, who's adjusted weaning tallied 882 with an index of 125. Look at his growth EPD's at 99 and 151, which ranks him in the top 2%.

API	126.3 60
TI	90.4 10

Reference Sire **TT ELITE 610E**
 Sire: BROWN COMMITMENT S7206 MGS: CNS DREAM ON L186

CE	BW	WW	YW	MCE	ADG	YG	Marb.	REA	API	TI
7	3.5	78	113	2.5	0.22	-0.25	0.53	0.41	142	80

TT Elite was one of our top selling bulls in 2018. We collected and sampled him within our herd. We are extremely satisfied with his success. He sired very functional cattle with great volume, mass, and growth. We are excited to see how his daughters will do as well.



LOT 39 • TT JOCK 593J

Lot **39** **TT JOCK 593J**

BD	Color	%Sim	BW/Ratio	205/Ratio	P/S
2/28/2021	R	3/4 SM 1/4 AR	100/112	707/100	PP

BROWN COMMITMENT S7206
 TT ELITE 610E
 BTS SWEET DREAM S610

TT JOCK 593J Reg #-3925019

WS BEEF MAKER R13
 TT MS BEEF MAKER 593C
 KR MS RODGE Z93

EPDs	%
CE	10.1 80
BW	1.5 75
WW	73.2 60
YW	105.8 75
MCE	5.2 80
Milk	26.4 25
MWW	62.9 40
YG	-0.41 10
Marb.	0.38 40
REA	0.71 45

You won't have trouble finding this Jock on sale day. This Elite son has rose to the top, he is long sided, with tremendous thickness and depth. Very well balanced set of EPD's all the way across and will add exceptional profit to his offspring.

API	143.7 25
TI	77.4 55



LOT 40 • TT JIMMY 200J

Lot **40** **TT JIMMY 200J**

BD	Color	%Sim	BW/Ratio	205/Ratio	P/S
3/1/2021	R	PB SM	105/117	727/103	PP

TT ELITE 610E
 TT GERONIMO 280G
 TT MS FORCE 280Z

TT JIMMY 200J Reg #-3924933

HSF MAJORITY 141S
 TT MS MAJORITY 200Z
 KSR RED PASSION 400N

EPDs	%
CE	9.6 70
BW	2.1 60
WW	67.2 90
YW	95.2 95
MCE	7.7 20
Milk	28.3 20
MWW	61.9 55
YG	-0.33 90
Marb.	0.05 70
REA	0.74 85

This dark red Geronimo son has been a ranch favorite all summer long. Geronimo was high selling bull in 2020 and were fortunate to get him collected and used within our own herd. 200J tipped the scale at 727 pounds at weaning with a 103 index. Look for him to add extra performance and pounds to your calf crops.

API	132.7 45
TI	69.1 90



Reference Sire **KBHR ALL AMERICAN G104**

Sire: WS ALL ABOARD B80 MGS: GW REDESTINED 642X

CE	BW	WW	YW	MCE	ADG	YG	Marb.	REA	API	TI
4.8	5.2	103	158	1.8	0.34	-0.57	0.32	1.37	131	94

KBHR All American was sampled as he is the new performance bull of 2020. He is a breed leading performance red bull with faultless structure.



LOT 41 • TT JUSTICE W4J

Lot **41** **TT JUSTICE W4J**

BD	Color	%Sim	BW/Ratio	205/Ratio	P/S
2/27/2021	R	PB SM	95/	680/	PP

WS ALL ABOARD B80
KBHR ALL AMERICAN G104
KBHR C078

TT JUSTICE W4J Reg #-3925045

HOOK'S RED ZONE 79Z
TT MS REDZONE 490B
TT MS MAJORITY 190Y

EPDs		%
CE	12.8	25
BW	3	80
WW	97	4
YW	151.1	3
MCE	6.6	35
Milk	25.1	40
MWW	73.5	10
YG	-0.56	3
Marb.	0.41	10
REA	1.28	2
API	160.8	10
TI	97	3

Lots 41-44 – Study this great set of All American embryo sons, out of our 490B Red Zone donor daughter. This is a set of true power bulls that rank in the top 3% for growth. These big-time performers are thick, deep, and stout. Make sure you look these up on sale day.

Lot **42** **TT JOE NAMATH 024J**

ASA#	BD	Color	%Sim	BW/Ratio	205/Ratio	P/S
-3924939	2/27/2021	R	PB SM	87/	681/	PP

EPDs	CE	BW	WW	YW	MCE	Milk	MWW	YG	Marb.	REA	API	TI
%	9.8	2.5	85.6	131.2	4.6	25.1	67.9	-0.49	0.36	1.24	149	88.6
%	65	70	25	20	75	40	25	20	10	3	15	15

Lot **43** **TT JUNGLE JIM 111J**

ASA#	BD	Color	%Sim	BW/Ratio	205/Ratio	P/S
-3925049	3/6/2021	R	PB SM	102/	712/	PP

EPDs	CE	BW	WW	YW	MCE	Milk	MWW	YG	Marb.	REA	API	TI
%	9	5	94.1	145.4	4	25.1	72.1	-0.59	0.24	1.27	142	88.2
%	75	99	10	10	85	40	15	1	25	2	25	15

Lot **44** **TT JIGSAW 313J**

ASA#	BD	Color	%Sim	BW/Ratio	205/Ratio	P/S
-3925050	3/5/2021	R	PB SM	89/	740/	PP

EPDs	CE	BW	WW	YW	MCE	Milk	MWW	YG	Marb.	REA	API	TI
%	9.7	4.7	96.3	152.5	4.7	25.1	73.2	-0.49	0.39	1.13	151.3	93.4
%	70	99	4	3	70	40	10	20	10	10	15	5

Lot **45** **TT JIMMY BUFFET 205J**

BD	Color	%Sim	BW/Ratio	205/Ratio	P/S
3/10/2021	R	PB SM	98/111	695/98	PP

WS ALL ABOARD B80
KBHR ALL AMERICAN G104
KBHR C078

TT JIMMY BUFFET 205J Reg #:-3924931

WS BEEF MAKER R13
TT MS BEEF 205Z
TT MS GUN 957U

EPDs	%	
CE	7.2	90
BW	1.9	55
WW	78.6	45
YW	113.2	55
MCE	3.7	85
Milk	27.3	25
MWW	66.5	30
YG	-0.47	25
Marb.	0.38	10
REA	1.01	25
API	143.9	25
TI	84.5	25

Jimmy Buffett is another All American that is a great performer. He is a homo polled moderate framed meat wagon. He will add pounds and profit to his calf crops.



LOT 46 • TT JUDGE 947J

Lot **46** **TT JUDGE 947J**

BD	Color	%Sim	BW/Ratio	205/Ratio	P/S
3/11/2021	R	PB SM	85/103	708/100	PP

HOOK'S BEACON 56B
TT FORWARD 668 F
TT MS TUITION 668D

TT JUDGE 947J Reg #:-3924979

IR IMPERIAL D948
TT MS IMPERIAL 947G
TT MS RED ZONE 547C

EPDs	%	
CE	16.1	4
BW	-2.2	4
WW	64.2	95
YW	93.4	95
MCE	8.8	10
Milk	21.8	65
MWW	53.9	90
YG	-0.42	55
Marb.	0.78	1
REA	1.02	25
API	181.9	1
TI	91.4	10

A whole new deal here. The sire here is a Beacon out of a Tuiton a unique red factor pedigree for sure. 947J dam is a first calf heifer out of Imperial that did a super job. Study this set of numbers. This homo polled heifer bull prospect tallies a 182 API ranking in the top 1% with 91 TI top 10%.



LOT 48 • TT JUDSON 933J

Lot **47** **TT JUD 919J**

BD	Color	%Sim	BW/Ratio	205/Ratio	P/S
3/15/2021	R	PB SM	90/108	706/100	PP

HOOK'S BEACON 56B
TT FORWARD 668 F
TT MS TUITION 668D

TT JUD 919J Reg #:-3925020

CDI BOLT 273C
TT MS BOLT 919G
TT MS RED IRON 318A

EPDs	%	
CE	11.8	40
BW	1.6	50
WW	84.6	25
YW	123.5	35
MCE	7.6	20
Milk	24	50
MWW	66.3	30
YG	-0.4	65
Marb.	0.22	30
REA	1.05	20
API	146.5	20
TI	84.9	25

Here is another TT Forward purebred red bull with an out-cross pedigree. A homo polled bull that certainly puts it all together. One to keep in mind sale day.

Lot **48** **TT JUDSON 933J**

BD	Color	%Sim	BW/Ratio	205/Ratio	P/S
3/13/2021	R	PB SM	90/108	795/113	PP

HOOK'S BEACON 56B
TT FORWARD 668 F
TT MS TUITION 668D

TT JUDSON 933J Reg #:-3925024

CHSR CARSON 36C
TT MS CARSON 933G
TT MS COOPER 633D

EPDs	%	
CE	12.6	30
BW	0.6	30
WW	92.3	10
YW	141.8	10
MCE	6.9	30
Milk	25	40
MWW	71.1	15
YG	-0.34	90
Marb.	0.39	10
REA	0.95	35
API	158.7	10
TI	95.3	4

Unique pedigree homo polled red bull here. He may work as heifer bull but has a great set of growth EPD's to keep in mind. Top 10% on WW and YW EPD's and top 10% in API.

Lot **49** **TT JOE CAMEL 780J**

BD	Color	%Sim	BW/Ratio	205/Ratio	P/S
4/2/2021	R	3/4 SM 1/4 AR	81/93	691/98	PP

HXC CONQUEST 4405P
TT FIREBALL 280B
TT MS FORCE 280Z

TT JOE CAMEL 780J Reg #:-3924911

HOOK'S RED ZONE 79Z
TT MS RED ZONE 780E
KSR RED RUBY 801T

EPDs	%	
CE	14.8	25
BW	-1.6	20
WW	69.9	75
YW	100.2	85
MCE	9.3	15
Milk	25.7	30
MWW	60.6	50
YG	-0.39	10
Marb.	0.19	75
REA	0.89	15
API	121.6	70
TI	75	65

Heifer bull candidate here out of TT Fireball and a Red Zone daughter. Low birth weight bull that has calving ease with good performance.

The Elite 8

The ELITE 8 is an opportunity to own our best. We again have selected some our top female prospects for you. We will retain the right of one flush on each of these females. We could not let this quality of females go without this opportunity to maintain their genetics. Take some time and analyze these elite females.



LOT 50 • TT MS PTO 063H

Lot **50** **TT MS PTO 063H**

BD	Color	%Sim	BW/Ratio	205/Ratio	P/S
3/14/2020	BB	PB SM	85/106	703/105	PP
			GW PTO 345B		
			GW PTO 536D		
			GW MISS GOLD DIGGER 582A		
			TT MS PTO 063H Reg #:3769461		
			IR RANGE BARON B773		
			TT MS RANGE 733E		
			TT MS ATLANTIC 533C		

EPDs	%
CE	8.6 80
BW	3.1 80
WW	84.9 20
YW	148.3 3
MCE	6.4 40
Milk	23.7 45
MWW	66.1 30
YG	-0.15 99
Marb.	0.21 30
REA	0.49 99
API	140 30
TI	82.8 25

Ms PTO 063 is how you want you females made. She is moderate framed with a big sweeping rib shape and a wide thick top. She combines phenotype with a great EPD profile. She indexed a 106 for BW, 105 for WW and ,110 for YW. Bred on 5/22/21 to W/C Night Watch. Confirmed AI bred with heifer calf.





LOT 51 • TT MS TREASURE 051H

The *Elite 8*

Lot 51 TT MS TREASURE 051H

BD	Color	%Sim	BW/Ratio	205/Ratio	P/S
2/6/2020	BB	1/2 SM 1/2 AN	68/88	674/101	PP
V A R DISCOVERY 2240					
MGR TREASURE					
SJH IMPRESSION OF 6108 1614					
TT MS TREASURE 051H Reg #:3769582					
GW PTO 536D					
TT MS PTO 851F					
TT MS COOPER 441B					

EPDs		%
CE	18.4	3
BW	-2.3	15
WW	74.1	55
YW	135.3	15
MCE	12.9	1
Milk	18.5	85
MWW	55.5	75
YG	0.15	99
Marb.	0.8	2
REA	0.04	99
API	168.9	3
TI	92.6	4

TT Ms Treasure is a homo polled and black 1/2 blood that boosts a 169 API and 93 TI ranking in top 3 and 4%. Bred on 5/22/21 to LRS Iconic. Confirmed AI bred

Lot 52 TT MS RED ZONE 099H

BD	Color	%Sim	BW/Ratio	205/Ratio	P/S
2/14/2020	R	PB SM	81/105	687/111	HP
WS BEEF KING W107					
HOOK'S RED ZONE 79Z					
HOOK'S UNCENSORED 47U					
TT MS RED ZONE 099H Reg #:3769508					
CDI HOMETOWN 246A					
TT MS HOMETOWN 899F					
TT MS MAJORITY					

EPDs		%
CE	10.1	60
BW	2.2	65
WW	89	15
YW	135.7	15
MCE	4.2	80
Milk	24.3	40
MWW	68.8	20
YG	-0.58	2
Marb.	0.04	75
REA	1.39	1
API	128.3	55
TI	83.2	25

Purebred Red Zone daughter that has that brood cow look. She is big bodied with big top and hip. Pasture bred to GW Hawkeye June 26th.



LOT 52 • TT MS RED ZONE 099H

The *Elite 8*

The Elite 8



LOT 53 • TT MS IMPERIAL 045H

Lot 53 TT MS IMPERIAL 045H

BD	Color	%Sim	BW/Ratio	205/Ratio	P/S
2/25/2020	R	3/4 SM 1/4 AR	81/104	562/91	PP
IR IMPERIAL B772					
IR IMPERIAL D948					
IR MS DUAL FOCUS W086					
TT MS IMPERIAL 045H Reg #:3769481					
OOO SIR LOIN 5122					
TT MS SIRLOIN 845F					
TT MS RED ZONE 645D					

EPDs		%
CE	11.4	65
BW	-2.3	15
WW	68.1	75
YW	112.5	55
MCE	6.4	60
Milk	17.5	90
MWW	51.5	90
YG	-0.27	40
Marb.	0.54	15
REA	0.63	55
API	152.8	15
TI	82.7	30

Here is an Imperial daughter out of a super productive 1/2 blood cow. 045H is a maternal sister to the lot 37 bull. She is a broody heifer that has a ton of potential. Bred on 5/22/21 to KBHR Sniper. Confirmed AI bred with a bull calf.

Lot 54 TT JOLENE 134J

BD	Color	%Sim	BW/Ratio	205/Ratio	P/S
2/19/2021	BB	PB SM	65/81	600/94	PP
HOOK'S EAGLE 6E					
TJ GOLD 274G					
TJ 12C					
TT JOLENE 134J Reg #-3924989					
BTS SHEAR BRILLIANCE104Y					
TT 634DD					
TT MS B TOTAL 334A					

EPDs		%
CE	21.2	1
BW	-3.9	1
WW	63.4	95
YW	106	75
MCE	11	1
Milk	25.6	35
MWW	57.2	75
YG	-0.24	99
Marb.	0.45	5
REA	0.71	90
API	178.8	1
TI	85.9	20

Take a look here at this lead off open heifer for the Elite 8. There is not enough room to write everything one could say about her. This sweet purebred TJ Gold heifer ranks in the top 1% for API. When you study her physically, she hits you hard with her overall balance and style from end to end. She is the real deal.

The Elite 8



LOT 54 • TT JOLENE 134J



The Elite 8

LOT 55 • TT JENNY 168J

Lot **55** **TT JENNY 168J**

BD	Color	%Sim	BW/Ratio	205/Ratio	P/S
2/23/2021	BB	PB SM	64/84	590/101	PP

HOOK'S BEACON 56B
 CLRS GUARDIAN 317G
 CLRS ALWAYS XCELLENT
TT JENNY 168J Reg #-3925001
 HOOK'S BOZEMAN 8B
 TT MS BOZEMAN 868F
 BTS MS GAMBLER 715T

EPDs		%
CE	16	4
BW	-2.9	2
WW	78.8	45
YW	120.8	40
MCE	9	10
Milk	24.9	40
MWW	64.3	40
YG	-0.47	25
Marb.	0.48	4
REA	1.22	4
API	175	2
TI	94.6	4

Stellar pedigree in this elite heifer. She is a Guardian out of a up and coming Bozeman daughter, going back to our 715T donor cow. An elite pedigree with elite numbers here, at 175 API ranks top 2% and top 4% for TI at 95.



The Elite 8



LOT 56 • TT JESSIE 128J

Lot 56 TT JESSIE 128J

BD	Color	%Sim	BW/Ratio	205/Ratio	P/S
2/15/2021	BB	PB SM	68/	518/	PP
HOOK'S BLACK HAWK 50B					
HOOK'S EAGLE 6E					
HOOK'S CRYSTAL 1C					
TT JESSIE 128J Reg #-3924966					
BTS SHEAR BRILLIANCE104Y					
TT MS BUBBA 529C					
TT MS PAYDIRT 029X					

EPDs	%
CE	9.4 70
BW	3 80
WW	87.6 20
YW	142 10
MCE	5.1 65
Milk	25.1 40
MWW	68.8 20
YG	-0.43 50
Marb.	0.28 20
REA	1.15 10
API	144.3 25
TI	87.3 15

Purebred homo polled and black Eagle daughter who was a twin with another heifer. Don't worry about the weaning weight on this female as her mother raised both calves and weaned over 1000 pounds of calf. Performance potential is built into this one. The Eagles have become sought after as great mothers and this one will be no different.

Lot 57 TT JOY 114J

BD	Color	%Sim	BW/Ratio	205/Ratio	P/S
3/2/2021	R	PB SM	90/113	681/107	PP
WS ALL ABOARD B80					
KBHR ALL AMERICAN G104					
KBHR C078					
TT JOY 114J Reg #-3924997					
RFS RED IRON T20					
TT MS RED IRON 612D					
TT MS MAJORITY 200Z					

EPDs	%
CE	6.2 95
BW	5.4 99
WW	90.7 10
YW	131 20
MCE	4.9 70
Milk	28.6 20
MWW	73.9 10
YG	-0.51 15
Marb.	0.09 60
REA	1.09 15
API	122.1 70
TI	80.7 40

TT Joy is a high-performance All-American daughter. These All America's are high growth cattle with extra muscle. Look for her to add power and growth.



LOT 57 • TT JOY 114J

The Elite 8

Open Heifers



LOT 58 • TT MS DIVIDEND 106J

Lot 58 TT MS DIVIDEND 106J

BD	Color	%Sim	BW/Ratio	205/Ratio	P/S
2/19/2021	BB	PB SM	68/	513/	PP
CLRS AFTER SHOCK 604 A					
CLRS DIVIDEND 405D					
CLRS BONNIA 405 B					
TT MS DIVIDEND 106J Reg #-3924938					
TT COOPER 36Z					
TT MS COOPER 806F					
TT MS YELLOWSTONE 508C					

This Dividend heifer will add a lot of genetic value for anyone. She has a great set of performance numbers along with her EPD's.

EPDs		%
CE	16.2	4
BW	-2.9	2
WW	60.1	99
YW	100.7	85
MCE	7.6	20
Milk	18.8	90
MWW	48.8	99
YG	-0.12	99
Marb.	0.28	20
REA	0.29	99
API	157.6	10
TI	76.5	55

Lot 59 TT MS PTO 162J

BD	Color	%Sim	BW/Ratio	205/Ratio	P/S
3/16/2021	BB	PB SM	85/106	626/98	PP
GW PTO 345B					
GW PTO 536D					
GW MISS GOLD DIGGER 582A					
TT MS PTO 162J Reg #-3924958					
ASR AUGUSTUS Z2165					
TT MS AUGUSTUS 662D					
TT MS PIONEER 162Y					

Take note on this PTO female. The PTO daughters are great mothers that are good uddered and easy fleshing.

EPDs		%
CE	13.1	20
BW	-0.9	10
WW	51.9	99
YW	85.2	99
MCE	7.8	20
Milk	22.6	60
MWW	48.5	99
YG	-0.22	99
Marb.	0.27	20
REA	0.36	99
API	145.8	20
TI	69.1	90

Lot 60 TT MS PTO 152J

BD	Color	%Sim	BW/Ratio	205/Ratio	P/S
4/5/2021	BR	3/4 SM 1/4 AR	90/115	639/101	PP
GW PTO 345B					
GW PTO 536D					
GW MISS GOLD DIGGER 582A					
TT MS PTO 152J Reg #-3924953					
HOOK'S RED ZONE 79Z					
TT MS RED ZONE 812F					
TT MS MOJO 602D					

Cannot say enough about the PTO's. They do a lot of things right from frame size, growth and staying sound. Raise big stout calves with lots of muscle.

EPDs		%
CE	11.5	65
BW	3.1	95
WW	72.6	65
YW	126.1	30
MCE	5.8	70
Milk	25.4	30
MWW	61.6	45
YG	-0.17	70
Marb.	0.52	20
REA	0.56	70
API	140	35
TI	79.1	45





LOT 61 • TT MS FRANCHISE 118J

Lot **61** **TT MS FRANCHISE 118J**

BD	Color	%Sim	BW/Ratio	205/Ratio	P/S
2/18/2021	B	5/8 SM 3/8 AN	80/104	567/89	P
CCR COWBOY CUT 5048Z					
TJ FRANCHISE 451D					
TJ MISS NET WORTH U11					
TT MS FRANCHISE 118J Reg #-3924961					
TT COOPER 36Z					
TT MS COOPER 813F					
TT DIAMOND GIRL 913U					

EPDs		%
CE	12.7	45
BW	-0.6	35
WW	64	90
YW	102.1	80
MCE	5.7	70
Milk	20.9	70
MWW	52.9	90
YG	-0.07	95
Marb.	0.46	25
REA	0.21	99
<hr/>		
API	139.1	35
TI	75.3	65

TJ Franchise out of a Cooper. Sweet looking very appealing heifer here. Keep an eye on her sale day.



LOT 63 • TT MS FIREBALL 148J

Lot **62** **TT MS GUIDELINE 122J**

BD	Color	%Sim	BW/Ratio	205/Ratio	P/S
3/16/2021	BR	PB SM	80/104	579/90	PP
CDI MAINLINE 265D					
HOOK'S GUIDE LINE 97G					
HOOK'S DACIA 14D					
TT MS GUIDELINE 122J Reg #-3924978					
HOOKS ATLANTIC 18A					
TT MS ATLANTIC 802F					
TT MS FORCE 302A					

EPDs		%
CE	10.5	55
BW	0.6	30
WW	72.4	75
YW	122.7	35
MCE	7.2	25
Milk	26.1	30
MWW	62.2	50
YG	-0.29	99
Marb.	0.01	80
REA	0.87	55
<hr/>		
API	129.1	55
TI	74.1	70

Our first set of Guide Lines, our new herd sire. He is deep, stout, and thick. His offspring are the same. Here is a chance to own one out of a young Atlantic female.

Lot **63** **TT MS FIREBALL 148J**

BD	Color	%Sim	BW/Ratio	205/Ratio	P/S
3/14/2021	R	3/4 SM 1/4 AR	70/89	604/95	PP
HXC CONQUEST 4405P					
TT FIREBALL 280B					
TT MS FORCE 280Z					
TT MS FIREBALL 148J Reg #-3924899					
HOOK'S RED ZONE 79Z					
TT MS RED ZONE 768E					
TT MS MAJORITY 008X					

EPDs		%
CE	18.8	3
BW	-3.9	4
WW	56.2	99
YW	78.6	99
MCE	11	4
Milk	25.4	30
MWW	53.4	85
YG	-0.33	25
Marb.	0.21	70
REA	0.73	40
<hr/>		
API	129.9	50
TI	70	85

You want them moderate deep and easy doing. Look no further, here she is. Typical Fireball, extremely easy doing with abundance of volume and capacity.

Lot **64** TT MS FIREBALL 193J

BD	Color	%Sim	BW/Ratio	205/Ratio	P/S
3/17/2021	R	3/4 SM 1/4 AR	85/106	622/98	PP

HXC CONQUEST 4405P
 TT FIREBALL 280B
 TT MS FORCE 280Z
TT MS FIREBALL 193J Reg #-3925035
 HOOK'S RED ZONE 79Z
 TT MS RED ZONE 699D
 TT MS MAJORITY

Another opportunity for a Fireball. The Fireball's have been problem free, easy calving, easy fleshing and easy going.

EPDs		%
CE	14	30
BW	0.1	45
WW	61.9	95
YW	86.2	99
MCE	8.1	30
Milk	27.7	15
MWW	58.6	60
YG	-0.31	30
Marb.	0.23	70
REA	0.81	25
API	122	70
TI	68.7	90

Lot **65** TT MS GERONIMO 157J

BD	Color	%Sim	BW/Ratio	205/Ratio	P/S
2/28/2021	R	PB SM	90/111	529/83	PP

TT ELITE 610E
 TT GERONIMO 280G
 TT MS FORCE 280Z
TT MS GERONIMO 157J Reg #-3924944
 RFS RED IRON T20
 TT MS REDIRON 457B
 TT MS GUN 957U

First set of Geronimo's, he was high selling bull in 2020. We collected him to use for ourselves as well. A chance for some new fresh genetics.

EPDs		%
CE	6.3	95
BW	2.9	80
WW	71.7	75
YW	99.3	85
MCE	3.7	85
Milk	22	65
MWW	57.8	75
YG	-0.45	35
Marb.	0.11	55
REA	0.88	50
API	124.2	65
TI	71.4	80



LOT 66 • TT MS FIREBALL 198J

Lot **66** TT MS FIREBALL 198J

BD	Color	%Sim	BW/Ratio	205/Ratio	P/S
4/1/2021	R	1/2 SM 1/2 AR	85/106	590/93	P

HXC CONQUEST 4405P
 TT FIREBALL 280B
 TT MS FORCE 280Z
TT MS FIREBALL 198J Reg #-3924907
 SCHULER REBEL 0029X
 TT MS REBEL 798E
 KS MISS AUTHORITY C598

1/2 blood homo polled Fireball out of an awesome Rebel daughter. She's got that special brood cow look. Don't miss this chance for a super female out of Fireball.

EPDs		%
CE	14.5	25
BW	-2.1	15
WW	69.3	75
YW	107.4	70
MCE	9.1	15
Milk	30.8	5
MWW	65.3	30
YG	-0.02	99
Marb.	0.3	55
REA	0.09	99
API	132.7	45
TI	77.2	55



Lot **67** TT TT MS GERONIMO 117J

BD	Color	%Sim	BW/Ratio	205/Ratio	P/S
2/25/2021	R	PB SM	68/	569/	PP

TT ELITE 610E
 TT GERONIMO 280G
 TT MS FORCE 280Z
TT TT MS GERONIMO 117J Reg #-3925040
 BTS NIGHT RIDER H817
 TT MS NIGHT RIDER 715E
 TT MS MAJORITY 200Z

A PB red heifer out of Geronimo. Take advantage of an opportunity here.

EPDs		%
CE	10.4	60
BW	1.2	40
WW	71.2	80
YW	103	80
MCE	7.4	25
Milk	26.6	30
MWW	62.1	50
YG	-0.42	55
Marb.	0.06	65
REA	0.93	40
API	136.6	35
TI	73.3	75

Lot **68** TT MS ALL AMERICAN 189J

BD	Color	%Sim	BW/Ratio	205/Ratio	P/S
3/4/2021	R	PB SM	90/114	614/97	PP

WS ALL ABOARD B80
 KBHR ALL AMERICAN G104
 KBHR C078
TT MS ALL AMERICAN 189J Reg #-3925028
 RFS RED IRON T20
 TT MS RED IRON 689D
 KSR CURL 889T

And we end with an awesome All-American heifer with performance and power. These All American's will be power cows who raise big calves.

EPDs		%
CE	5	99
BW	5	99
WW	89.4	15
YW	135.8	15
MCE	2.8	95
Milk	23.2	55
MWW	67.9	25
YG	-0.53	10
Marb.	0.16	40
REA	1.23	3
API	129.7	50
TI	81.9	35



Tim & Tam Clark
1999 18th St NW
Turtle Lake, ND 58575

