

Annual production sale
Feb. 17, 2024
At the Ranch • Turtle Lake, ND • 2 p.m.
www.DoubleTSimmentals.com

Our philosophy is simple:
Profit



It is with great pleasure that we welcome you to our 15th Annual production sale. We are extremely excited about the 2024 class of bulls. We strive to use breed leading bulls to advance our program and, in the end, advance your program as well.

As the industry moves into a new era of genomic data, we too have included more genomic data for your evaluation. With the entire cow herd and herd bulls being tested. We moved forward now to test our complete calf crop. This will enhance the overall accuracy and power of the genomic data. All bulls in the sale have been DNA profiled to provide Genomic Enhanced EPD's. With this increase in overall accuracy of young animals, this in turn will reduce some of the risk in making your bull selection. We work hard to offer as much information as possible to our customers, to make your decisions easier and more informed. **New this year we have also included Allied Genetic Resources, Right Choice genomic designation to bull lots. Learn more on this program on page 3.** All the bulls have also been tested for homo polled along with all black bulls tested for coat color. Black bulls will be indicated by a BB for homo black and BR for hetero black. Homo polled will be indicated by PP and hetero polled by HP. All the red bulls are diluter free. Which means, if used on black cows, no worries of producing a gray calf.

We pride ourselves on offering you all the information needed to make your bull selections. We will have yearling weights and scrotal measurements on a supplement sheet provided sale day. If you would like to break down these numbers before sale day, please give us a call. We will have them available prior to the sale.

We continue to breed cattle that will work for you and the entire industry. We want to raise cattle that are functional and profitable. The first order of business in any operation is to have a live calf. We have focused on cattle with calving ease and acceptable birth weights, while maintaining growth and performance for our commercial cattlemen.

Again, this year, we will be broadcasting the sale thru DV Auction service. We invite you to come walk through the bulls and females prior to the sale one on one. This will give you the opportunity to see them firsthand and on sale day bid over DV Auction in the comforts of your home. We will assist you any way we can to make it easier for you to purchase.

Simmental influenced cattle are more popular than any time before and sought after in every segment of the industry. Cattlemen across the country are looking to the Simmental breed to improve growth, maternal traits, and overall red meat yield. With the trend of increased carcass weights and demand for higher quality grading cattle, Simmentals have the traits to help you increase profit and demand.

Let us help you find a bull that will fit your program and needs to improve profit and functionality.

Please join us on February 17th for Lunch at 11:30 with sale to follow at 2 PM.

Thanks for your interest
Tim and Tam Clark
Michael and Jessie Martin
Shane and Kayla Swanson

Our philosophy is simple:
Profit

Improved Buying Confidence with Greater Genomic **ASSURANCE**

Access to more and better information has always been key to making wise decisions. The evolution and improvement of genetic evaluation tools too has given us an ever-clearer picture of the true genetic makeup of cattle and thus a better view of the value proposition. RightMate, powered by Top Genomics LLC is taking the evaluation of genetics and genomics one giant step further. By combining specific genomic information with the long-proven value of EPDs, this new advancement in technology improves our depth and precision when evaluating the actual ability to transmit value and profit.

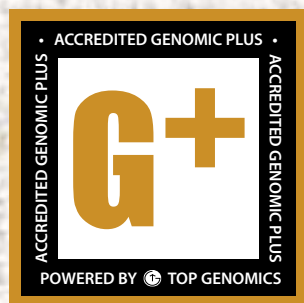
The 3 Accreditation Logos below are designed to simplify bull selection and improve buyer confidence by more accurately describing the genetics offered and by reducing risk. What this means to you as a customer is a much greater assurance that you are getting both what you want and need from the genetics you purchase. What it means to your seedstock provider is access to RightMate technology that simply sets them apart from the rest of the industry.



ACCREDITED CALVING EASE – Simply find bulls with the ACE logo for third party Accredited, secure Calving Ease bulls. Though we have had tools in the past to assist in choosing heifer bulls, we've never had one nearly this effective. The reduced risk that comes with this genomic certification will simply make your decisions easier and your heifer calving season more successful. Purchase special purpose ACE bulls with confidence. They will deliver consistent and predictable calving ease.



ACCREDITED TERMINAL MATE – Just like an ATM machine makes it simpler to access your cash, the ATM Logo highlights bulls accredited to generate extra cash income as soon as your next calf crop! These bulls are meant specifically to use only on mature cows and for the purpose of adding performance, pay weight and end product value to market.



ACCREDITED GENOMIC PLUS – For the majority of producers who simply need consistent and balanced genetic improvement, without genomic setbacks, G+ Accredited bulls should be on your list for premium purchase. These sires will absolutely move you forward for both cost reduction and income producing traits and substantially reduce risk when compared to all other evaluation programs. It's simple, the right genes are in these bulls to help secure a profitable future and they have great EPDs to match!

CLARITY IS CASH



\$20+
**MORE PER
CARCASS**

74lb.
LIGHTER COWS

Today's industry pays big for heavy fat steers, but your pocketbook demands smaller cows. What to do?

The answer is clear, dependable data and the courage to bypass traditional straightbreeding.

Simmental-influenced cows are an average **74 lb. lighter** at maturity than Angus-sired counterparts.^a

Meanwhile, packers pay **\$20 to \$34 more** for SimAngus™ and Simmental-sired steers than English-sired calves.^b

Finally, raise efficient cows and high-performance calves. The proof is in the data – and the cash.

**STAND STRONG
SIMMENTAL**

406-587-4531 • simmental.org

^aUSMARC, Zimmerman, M., et al., "Breed and heterotic effects for mature weight in beef cattle," *J. of Anim. Sci.*, Vol. 99, 2021. Adjusted for sire sampling, Angus was the heaviest at maturity among the 16 breeds evaluated. Solutions are deviations from Angus. YW EPDs were extracted from genetic evaluations conducted in 2019. Estimate of MWT differences at 6 years of age. The study considered 108,857 weight records from 5,156 crossbred cows sired by 787 bulls. ^bEffect of sire breed group on carcass value of feedlot cattle harvested through Tri-County Steer Carcass Futurity Cooperative, Lewis, Iowa, 2002 to 2018. Odde, K. & King, M. (March 2021). Kansas State University. Relationships Among Sire-Breed Group, Calf Sex and Year Group on Carcass Traits. Breeds represented in the English-sired group: Angus, Red Angus, South Devon, Hereford and Shorthorn.

Our philosophy is simple: **PROFIT**

Double T Simmental Ranch

Profit

Our philosophy is simple:

15th Annual Production Sale
Feb. 17th 2024

At the Ranch, Turtle Lake, ND • 2 p.m. CST

Physical Address: 1999 18th St. NW Turtle Lake ND 58575

Complimentary Lunch will be served from 11:30 to 1:30

Location:

At the Ranch – 11 miles north of Turtle Lake on Hi-way 41 to county road 8N (note: do not take county road 8) then west 3 miles on county road 8N.

From Velva – approximately 25 miles south on Hi-way 41 to county road 8N, 3 miles west on 8N.

Accommodations:

Scotwood Motel, Washburn, ND701-462-8191 (40 mins)

North Shore Inn, Garrison, ND.....701-463-7202 (30 mins)

Contact information:

Home..... 701-448-2815

Tim's Cell 701-799-7752

Tam's Cell 701-315-0032

Auctioneer:

Mike Ostrem 701-208-0164

Sale Staff:

Tony Heins..... 701-400-4435

Vern Frey 701-721-0344

Russ Danielson..... 701-261-2742

Farm Visits: Bulls will be available to view at any time prior to sale day. For those who view prior to sale day, will receive a credit of \$100 on a purchase of a bull.

Guarantee: Bulls are guaranteed as breeders; if failing to be satisfactory, they must be reported to us by August 1. Our goal is for each customer to be satisfied; if not we will work with each individual to resolve any issues.

Herd Health: Calves were all vaccinated with 7 way, Bovishield Gold 5, and One Shot in the spring and fall. Bulls will receive 2 shots of Fusogard prior to delivery. Open Heifers will receive spring vaccination of Bovishield 5 VL5 prior to sale date. Bred females have been vaccinated with 2 shots of Scour Guard 4KC along with Virashield VL5 HB.

Semen interest: Double T will retain one-third semen interest on all bulls. Selling two-thirds semen interest and full possession.

Wintering: Bulls will be semen tested early April. When the bulls have completed breeding soundness exam we will begin delivering. Bulls being winter here will be charged a fee of \$180 per head at time of purchase, which includes feeding, semen testing, delivery, and insurance for 6 months. Free delivery will be limited to 300 miles.

Terms and conditions: All cattle sell under terms and conditions of the American Simmental Association and will be available on request the day of sale.

Risk: Double T Simmentals will not be responsible for any lost or stolen items or liable for any personal injury

Volume Discount: 3 bulls = 4% discount; 4 bulls = 5% discount; 5 or more bulls = 6% discount

Selling

43 Simmental & SimAngus™ Yearling Bulls

20 Open Heifers

& The Elite 8 4 Elite Breds
4 Elite Opens

DVAuction
Broadcasting Real-Time Auctions

Never Miss An Auction Again!
Watch & Bid online for FREE!



Catalog & Advertisements designed by
Strommen Livestock Services •Solen, ND • (701) 290-3886



REFERENCE SIRE **TEHAMA TAHOE B767**

Sire: TEHAMA UPWARD Y238 MGS: S A V FINAL ANSWER 0035

EPDs	CE	BW	WW	YW	ADG	MCE	MARB	YG	REA	API	TI
	16	-1	93.1	157.7	0.4	6.5	0.79	0.13	0.51	162.6	94.9

We selected Tahoe on the Angus side for his multi-purpose attributes of calving ease, growth and end product. His females are becoming sought after for their perfect udders and overall performance.



LOT 1 • TT LOMBARDI 104L

Lot **1** **TT LOMBARDI 104L**



BD	Color	%Sim	BW/Ratio	205/Ratio	P/S
2/12/2023	BB	1/2 SM 1/2 AN	80/96	800/112	PP
TEHAMA UPWARD Y238					
TEHAMA TAHOE B767					
TEHAMA MARY BLACKBIRD Y684					
TT LOMBARDI 104L Reg #: -4203352					
CLRS DIVIDEND 405D					
TT MS DIVIDEND 104J					
TT MS COOPER 604D					

Lombardi is the epitome of today's Simangus cross. He combines the elite genetics from each breed into flawless package. He is massively ribbed, massively topped and massively muscled. His tremendous phenotype coupled with his EPD profile makes him special and deserving of Lot 1 status. He ranks in the top 3% in weaning with a 97, top 1% for yearling weight with a 167 and top 1% for ADG.

EPDs	%
CE	14.6
BW	2
WW	96.8
YW	166.4
ADG	0.43
MCE	6.9
Milk	29.9
MWW	77.2
YG	-0.13
Marb.	0.42
REA	0.64
API	150.7
TI	94.3





LOT 2 • TT LAMBEAU 913L

Lot 2 TT LAMBEAU 913L



BD	Color	%Sim	BW/Ratio	205/Ratio	P/S
2/25/2023	BB	1/2 SM 1/2 AN	87/	774/	PP

TEHAMA UPWARD Y238

TEHAMA TAHOE B767

TEHAMA MARY BLACKBIRD Y684

TT LAMBEAU 913L Reg #: -4203453

WS EIGHT BALL W114

TT MS EIGHT BALL 688D

KSR BLACK BEAUTY

Lambeau is another Tahoe son that is equally impressive as his Lot 1 counterpart. An embryo mating from the famed 688D donor female who has two Rainfall sons the past two years, which were top sellers. Do not miss this great 1/2 blood bull, he will sire performance and profit to his calf crops.

EPDs	%
CE	14.8
BW	-0.1
WW	78.3
YW	130.6
ADG	0.33
MCE	7.5
Milk	34.2
MWW	72.2
YG	-0.19
Marb.	0.46
REA	0.72
API	153.6
TI	86.8





REFERENCE SIRE **KBHR GUNSMOKE J131**

Sire: LBRS GENESIS G69 MGS: HOOK'S BEACON 56B

EPDs	CE	BW	WW	YW	ADG	MCE	MARB	YG	REA	API	TI
	12.5	-0.2	88.9	134.7	0.29	8.7	0.95	-0.21	0.91	194.1	108.1

Gunsmoke is a new sire we sampled for his added growth and performance. We hoped he would pass on the added growth of Genesis without the extra added frame. He answered the call with more moderate frame with growth and muscle as expected.



LOT 3 • TT LONGMIRE 634L

Lot **3** **TT LONGMIRE 634L**



BD	Color	%Sim	BW/Ratio	205/Ratio	P/S
2/28/2023	BB	PB SM	92/102	720/101	PP
LBRS GENESIS G69					
KBHR GUNSMOKE J131					
KBHR E197					
TT LONGMIRE 634L Reg #: -4203383					
BTS SHEAR BRILLIANCE104Y					
TT 634DD					
TT MS B TOTAL 334A					

Longmire is a purebred Gunsmoke son that meets all expectations. He is a big bodied, thick muscled bull with impressive performance. His 185 API ranks him in the top 2%, along with top 2% for marbling. Longmire will sire high dollar feeders and fat cattle that will earn more profit. He carries the ACE and G+ logos. A heifer bull prospect with performance and pounds.

EPDs	%
CE	15.5
BW	-0.8
WW	73.1
YW	109.5
ADG	0.23
MCE	8.9
Milk	24.7
MWW	61
YG	-0.27
Marb.	0.69
REA	1.04
API	184.7
TI	93.2

Lot **4** **TT LANDRY 633L**



BD	Color	%Sim	BW/Ratio	205/Ratio	P/S
3/16/2023	BB	PB SM	88/102	730/102	PP
LBRS GENESIS G69					
KBHR GUNSMOKE J131					
KBHR E197					
TT LANDRY 633L Reg #: -4203380					
GW PTO 536D					
TT MS PTO 060H					
SRF MISS 509C					

Landry is a long bodied, well-balanced bull with great phenotype and numbers. He ranks in the top 10% for API and TI. He is marbling at .56 puts him in the top 5%. This together with his growth gives him great value. His mother's second calf has done an excellent job, she will be heard of more in the future.

EPDs	%
CE	13.2
BW	1
WW	87
YW	135.7
ADG	0.3
MCE	8.6
Milk	23.7
MWW	66.9
YG	-0.2
Marb.	0.56
REA	0.76
API	167.1
TI	95.6

Lot **5** **TT LITTLE BLUESTEM 647L**



BD	Color	%Sim	BW/Ratio	205/Ratio	P/S
3/23/2023	BB	PB SM	95/106	710/99	PP

EPDs	%
CE	13.2
BW	0.8
WW	76.1
YW	113.3
ADG	0.23
MCE	7.2
Milk	23.6
MWW	61.4
YG	-0.38
Marb.	0.56
REA	1.02
API	165.6
TI	89.8

LBRS GENESIS G69
KBHR GUNSMOKE J131
KBHR E197
TT LITTLE BLUESTEM 647L Reg #: -4203368
HOOK'S BOZEMAN 8B
TT MS BOZEMAN 647D
BTS MS GAMBLER 715T

This Gunsmoke bull hales from a great cow that continues to put one in the bull pen. Her bull two years ago, was the lot 1 bull, going to Maier Ranch in Elgin. This guy is very well balanced from end to end. Deep and thick from end to end.



REFERENCE SIRE **KBHR BOLD RULER H152**

Sire: WS PROCLAMATION E202 MGS: WS HOT BEEF X38

EPDs	CE	BW	WW	YW	ADG	MCE	MARB	YG	REA	API	TI
	18.3	-2.5	81.7	130.4	0.3	12.6	0.77	-0.25	0.59	189.5	103.3

Another young sire we elected to sample for his genetic package and overall genetic value. He has a stunning look along with an EPD profile that is elite as you can find.

Lot **6** **TT BOLD LEADER 50L**



BD	Color	%Sim	BW/Ratio	205/Ratio	P/S
3/3/2023	BB	3/4 SM 1/4 AN	90/	693/	PP

EPDs	%
CE	16.1
BW	-0.6
WW	92.1
YW	144.9
ADG	0.33
MCE	9
Milk	32.1
MWW	77.9
YG	-0.12
Marb.	0.63
REA	0.67
API	158.8
TI	99.2

WS PROCLAMATION E202
KBHR BOLD RULER H152
BAR CK MS X38 106Z
TT BOLD LEADER 50L Reg #: -4203283
TJ MAIN EVENT 503B
ADV MS MAIN EVENT E7032
TRPH MS CATALYST A384

Here is a new deal, Bold Ruler is a new bull we sampled with impressive results. Check out the pedigree on this guy. He is an embryo mating out of the 7032 female that is making her mark here and in the Simmental breed. He possesses top 10% growth along with top 10% API and top 3% TI. Bold Leader will add growth and pounds to his offspring.

Lot **7** **TT LEVI 301L**



BD	Color	%Sim	BW/Ratio	205/Ratio	P/S
3/8/2023	BB	PB SM	96/108	654/91	PH

EPDs	%
CE	17.4
BW	0.7
WW	78.5
YW	119.8
ADG	0.26
MCE	10.8
Milk	20.1
MWW	59.1
YG	-0.28
Marb.	0.51
REA	0.94
API	164.4
TI	90

WS PROCLAMATION E202
KBHR BOLD RULER H152
BAR CK MS X38 106Z
TT LEVI 301L Reg #: -4203333
HOOKS SHEAR FORCE 38K
TT ABBY 301A
TT DIAMOND GIRL 913U

Another Bold Ruler son that is impressive. He is moderate framed with tons of middle and body. He carries the G+ logo. He will sire great replacement females along with big stout high profit feeder cattle.





REFERENCE SIRE **SFG COWBOY LOGIC D627**

Sire:CCR COWBOY CUT 5048Z MGS: MCM TOP GRADE 018X

EPDs	CE	BW	WW	YW	ADG	MCE	MARB	YG	REA	API	TI
	15.3	0.8	95.7	152	0.35	10.1	0.46	-0.2	0.83	152.7	99.5

We have used Logic for a number of years now with great success. We only have one son this year out of him, but he is a powerhouse. Make sure you take note of him and his power.



LOT 8 • TT LOGIC 4L

Lot **8** **TT LOGIC 4L**



BD	Color	%Sim	BW/Ratio	205/Ratio	P/S
2/25/2023	BB	3/4 SM 1/4 AN	105/118	765/107	PP

CCR COWBOY CUT 5048Z
SFG COWBOY LOGIC D627
SFG QUEEN B01

TT LOGIC 4L Reg #: -4203372

BARSTOW CASH
SK E FORCE A633 G4
SK E FORCE A633 E183

EPDs	%
CE	10.1
BW	3.6
WW	94.1
YW	149.7
ADG	0.35
MCE	6.8
Milk	26.3
MWW	73.1
YG	-0.19
Marb.	0.33
REA	0.79
API	121.6
TI	86.7



BARSTOW CASH

Logic is a high-performance growth bull with tremendous meat and muscle. He carries a big thick quarter with a huge top and massive rib. Ranks in the top 5% for weaning and yearling growth and 10% for gain. Keep an eye out for this big, massive bull.



REFERENCE SIRE **G A R HOME TOWN**

Sire: G A R ASHLAND MGS: G A R SURE FIRE

EPDs	CE	BW	WW	YW	ADG	MCE	MARB	YG	REA	API	TI
	19.5	-0.9	77	138	0.38	13.2	1.29	-0.04	0.8	171.1	97.7

Was the other Angus bull we sampled. Hometown is noted for his calving ease, growth and breed leading marbling. An excellent set of females and bulls.

Lot **9** **TT LARAMIE 195L**



BD	Color	%Sim	BW/Ratio	205/Ratio	P/S	EPDs	%	
2/22/2023	BB	1/2 SM 1/2 AN	77/92	738/103	PP	CE	18.7	4
G A R ASHLAND						BW	-1.3	25
G A R HOME TOWN						WW	74.1	55
CHAIR ROCK SURE FIRE 6095						YW	129.8	25
TT LARAMIE 195L Reg #: -4203338						ADG	0.35	10
GW PTO 536D						MCE	11.3	4
TT MS PTO 195J						Milk	24	50
TT MS BOZEMAN 695D						MWW	61.1	55
Laramie is a GAR Hometown heifer bull prospect with a 11.8 CE EPD with extra growth. He also totes top 10% API and TI, along with top 5% marbling. Laramie is out of an exciting young PTO daughter we are excited about. If you need a heifer bulls, do not look past this one.						YG	-0.1	85
						Marb.	0.81	5
						REA	0.68	55
						API		
TI			93.6	10				

DVAuction
Broadcasting Real-Time Auctions

Visit www.DVAuction.com
and Register Today!

For General Questions Please Contact Our Office:
(402) 316-5460 or support@dvauction.com



REFERENCE SIRE **HA JUSTICE 30J**

Sire: HOOK'S GALILEO 210G MGS: HOOKS SHEAR FORCE 38K

EPDs	CE	BW	WW	YW	ADG	MCE	MARB	YG	REA	API	TI
	12	1.1	95.9	155.9	0.37	7.4	1.01	-0.23	1.07	197	113.6

Lot **10** **TT LONE RANGER 804L**



BD	Color	%Sim	BW/Ratio	205/Ratio	P/S	EPDs	%	
3/22/2023	BB	PB SM	86/97	748/105	PP	CE	12.1	40
HOOK'S GALILEO 210G						BW	1.1	45
HA JUSTICE 30J						WW	76.7	55
HOOK'S DACIA 14D						YW	123	35
TT LONE RANGER 804L Reg #:-4203342						ADG	0.29	20
IR PROSPECTOR C870						MCE	7	30
TT MS PROSPECTOR 804F						Milk	33.6	2
TT MS COOPER 604D						MWW	71.7	15
Lone Ranger is the one and only Justice bull, there will be more coming out of this exciting new bull. Lone Ranger is a combo G+/ATM bull with tons of performance. Look for him to add that extra pay weight to his calf crop.						YG	-0.28	90
						Marb.	0.68	2
						REA	1.07	15
						API	165.3	10
						TI	93.7	10



LOT 10 • TT LONE RANGER 804L



REFERENCE SIRE **GW HAWKEYE 805H**

Sire: GW BREAKTHRU 045C MGS: HOOK'S BEACON 56B

EPDs	CE	BW	WW	YW	ADG	MCE	MARB	YG	REA	API	TI
	14.6	-2.5	67	113.3	0.29	9.2	1.27	0.04	0.16	194.3	101.4

We purchased Hawkeye from Gateway and has been a great addition. Purchased his for his overall EPD profile as a heifer bull prospect. He has done a great job in siring calving ease while maintaining growth and elite carcass value.



LOT 11 • TT LINCOLN 173L

Lot **11** **TT LINCOLN 173L**



BD	Color	%Sim	BW/Ratio	205/Ratio	P/S
3/12/2023	BB	5/8 SM 3/8 AN	72/87	768/107	PP

GW BREAKTHRU 045C
GW HAWKEYE 805H
GW MISS BEACON 886E
TT LINCOLN 173L Reg #: -4203327
HOOK'S EAGLE 6E
TT MS EAGLE 173J
TT MS PROGRESS 421B

EPDs	%
CE	17.6
BW	-2.9
WW	80.2
YW	130.8
ADG	0.32
MCE	9.7
Milk	29.3
MWW	69.1
YG	-0.04
Marb.	1.08
REA	0.45
API	193.6
TI	105.7

Pay attention to the Hawkeye son. His dam, a bright and upcoming Eagle daughter out of the 421-donor cow. An impeccable bottom side to this bull, and out of Hawkeye who was one of top selling bull in Gateway's sale. He ranks in the top 1% on both API, TI, and marbling. Top 10% for CE and BW and still ranks in the top 25% for YW. To top it off, you will be amazed at his overall depth, volume, and muscle.

Lot **12** **TT LIGNITE 111L**



BD	Color	%Sim	BW/Ratio	205/Ratio	P/S
3/10/2023	BB	5/8 SM 3/8 AN	77/92	691/97	PP

GW BREAKTHRU 045C
GW HAWKEYE 805H
GW MISS BEACON 886E
TT LIGNITE 111L Reg #: -4203423
HOOK'S EAGLE 6E
TT MS EAGLE 111J
TT MS PROGRESS 421B

EPDs	%
CE	14.3
BW	0.1
WW	76.8
YW	133.8
ADG	0.36
MCE	8
Milk	27.7
MWW	65.9
YG	-0.13
Marb.	0.88
REA	0.71
API	167.7
TI	95.4

Lignite is a full brother in blood to Lincoln, lot 11. Their mothers are flush sisters. Here is another great heifer bull prospect with great calving ease, great growth, and fantastic API and TI.



LOT 13 • TT LIVINGSTON 130L

Lot 13 TT LIVINGSTON 130L



BD	Color	%Sim	BW/Ratio	205/Ratio	P/S
3/10/2023	BB	PB SM	85/101	680/95	PP

GW BREAKTHRU 045C
 GW HAWKEYE 805H
 GW MISS BEACON 886E
TT LIVINGSTON 130L Reg #: -4203427
 TJ GOLD 274G
 TT MS GOLD 130J
 TT AVA330A

Livingston is the last Hawkeye son out of a Gold daughter. He is another high indexing bull with top 1% marbling. He will sire high gaining feeder cattle with high value.

EPDs	%
CE	11.4
BW	-1.3
WW	70.8
YW	124.1
ADG	0.33
MCE	7.6
Milk	26.9
MWW	62.1
YG	0
Marb.	0.89
REA	0.23
API	178.1
TI	97



REFERENCE SIRE CLRS JACKPOT 8018J

Sire:EGL FIRESTEEL 103F MGS: HOOK'S XPECTATION 36X

EPDs	CE	BW	WW	YW	ADG	MCE	MARB	YG	REA	API	TI
	13.4	1.1	86.7	130.6	0.27	3	0.44	-0.4	1.25	146.5	89.3

We purchased this hetero black sire to use on our hetero black females to make some outcross red pedigrees. Like most things it takes time and patience to accomplish progress in this species. Jackpot did just what we had hoped, we do have some outcross red pedigreed sons and daughters that are flat out good. Watch for them going forward.



Lot 14 TT LUMBERJACK 851L



BD	Color	%Sim	BW/Ratio	205/Ratio	P/S
3/19/2023	BR	PB SM	80/90	739/103	PP

EGL FIRESTEEL 103F
 CLRS JACKPOT 8018J
 HOOK'S FREDERICA 18F
TT LUMBERJACK 851L Reg #: -4203381
 GW PTO 536D
 TT MS PTO 851F
 TT MS COOPER 441B

Lumberjack is out of our exciting new herd sire Jackpot. Lumberjack is a stout, heavy muscled bull with performance and power. Another great PTO daughter is his mother. He will add extra weight and pounds to his calf crop.

EPDs	%
CE	13.6
BW	1
WW	85.3
YW	137
ADG	0.32
MCE	5
Milk	29.2
MWW	71.6
YG	-0.33
Marb.	0.24
REA	1.03
API	150.9
TI	88.1

Lot **15** **TT LONGFELLOW 956L**



BD	Color	%Sim	BW/Ratio	205/Ratio	P/S
4/4/2023	BR	5/8 SM 3/8 AN	95/107	763/107	PH

EPDs	%
CE	12.2
BW	0.8
WW	84.1
YW	133.5
ADG	0.31
MCE	4.5
Milk	27
MWW	68.7
YG	-0.33
Marb.	0.35
REA	0.92
API	139.6
TI	85.7

EGL FIRESTEEL 103F
CLRS JACKPOT 8018J
HOOK'S FREDERICA 18F
TT LONGFELLOW 956L Reg #: -4203424
TT EQUITY 060E
TT GIZELLE 956G
TT MS TOUR 656D

Longfellow is another Jackpot son that performed well. He indexed 107 within his contemporary group. He ranks top 20% growth and carries the ATM/G+ logos. He will sire that extra growth and pounds going forward.

REFERENCE SIRE **GW PTO 536D**

Sire: GW PTO 345B MGS: LBR GOLD DIGGER W524

EPDs	CE	BW	WW	YW	ADG	MCE	MARB	YG	REA	API	TI
	13.3	0.3	73.2	135.5	0.39	7	0.5	-0.01	0.26	160	87.3

PTO has been our senior herd sire here for some time now. He remains perfectly sound with a big solid foot and flawless structure. He continues to sire daughters who are moderate framed and easy doing with impeccable udders.



LOT 17 • TT LEGEND 865L

Lot **17** **TT LEGEND 865L**



BD	Color	%Sim	BW/Ratio	205/Ratio	P/S
3/27/2023	BB	PB SM	99/111	780/109	PP

EPDs	%
CE	12.9
BW	0.9
WW	79.8
YW	135.2
ADG	0.35
MCE	5.9
Milk	29.9
MWW	69.5
YG	-0.27
Marb.	0.37
REA	0.74
API	154.8
TI	88.4

GW PTO 345B
GW PTO 536D
GW MISS GOLD DIGGER 582A
TT LEGEND 865L Reg #: -4203290
IR PROSPECTOR C870
TT MS PROSPECTOR 865F
TT MS BOZEMAN 695D

Legend is a super made high performance PTO son who has the look. If you retain females, make him a must. The PTO daughters just flat get it done, and Legend's daughter will be no different.





LOT 18 • TT LEVON 9205L

Lot 18 TT LEVON 9205L



BD	Color	%Sim	BW/Ratio	205/Ratio	P/S
3/19/2023	BB	1/2 SM 1/2 AN	90/100	693/97	PP

GW PTO 345B
GW PTO 536D
GW MISS GOLD DIGGER 582A
TT LEVON 9205L Reg #: -4203329
SILVEIRAS STYLE 9303
RUST MS ROSE 9205G
SOO LINE ROSE 1019

Here is a 1/2 blood PTO with style, balance, and guts. Extremely balanced EPDs, he will do it all well. His daughters will be a great asset to any herd and will sire steers with value and pounds.

EPDs	%
CE	13.3
BW	0.9
WW	70.4
YW	124
ADG	0.33
MCE	6.9
Milk	22.3
MWW	57.1
YG	0.05
Marb.	0.58
REA	0.27
API	151.2
TI	81.5

Lot 19 TT LOCKWOOD 841L

BD	Color	%Sim	BW/Ratio	205/Ratio	P/S
3/31/2023	BB	PB SM	101/114	715/100	PP

GW PTO 345B
GW PTO 536D
GW MISS GOLD DIGGER 582A
TT LOCKWOOD 841L Reg #: -4203389
HOOK'S BOZEMAN 8B
TT MS BOZEMAN 841F
BTS MS GAMBLER 715T

Lockwood puts a lot together as you look through his pedigree. On his dam's side, he is a Bozeman out of our long time Gambler donor. On the top side, our current senior herd sire PTO. There is maternal longevity built in her. A bull that will sire flat out good one whether they are steers or females.

EPDs	%
CE	9
BW	1.4
WW	67.1
YW	121.8
ADG	0.34
MCE	3.9
Milk	22.1
MWW	55.4
YG	-0.34
Marb.	0.25
REA	0.88
API	139.2
TI	76.4



LOT 20 • TT LEO 838L

Lot 20 TT LEO 838L



BD	Color	%Sim	BW/Ratio	205/Ratio	P/S
3/10/2023	BB	PB SM	82/92	714/100	PP

GW PTO 345B
GW PTO 536D
GW MISS GOLD DIGGER 582A
TT LEO 838L Reg #: -4203334
IR RANGE BARON B773
TT MS RANGE 838F
TT MS COOPER 428B

Leo is another well balanced phenotype bull with well balanced EPD's from one end to the other. Very consistent in his profile. A bull that will do it all sire market topping steer calves or raise replacement females for the herd.

EPDs	%
CE	13.4
BW	-0.4
WW	71.1
YW	120.9
ADG	0.31
MCE	6.8
Milk	28.1
MWW	63.4
YG	-0.17
Marb.	0.36
REA	0.38
API	152.6
TI	83.8



LOT 22 • TT LEROY 859L

Lot 21 TT LONGTIME 953L

BD	Color	%Sim	BW/Ratio	205/Ratio	P/S
3/12/2023	BB	PB SM	85/97	682/95	PP
GW PTO 345B					
GW PTO 536D					
GW MISS GOLD DIGGER 582A					
TT LONGTIME 953L Reg #: -4203397					
CDI MAIN ATTRACTION 259D					
TT MS ATTRACTION 953G					
TT MS ATLANTIC 553C					

This PTO son hales from an elite female foundation. His dam is sired by the Main Attraction going back to our 533-donor cow. Longtime is big, massive bull with extra muscle and mass. Look for him to breed the same.

EPDs	%
CE	10
BW	-2.2
WW	64.3
YW	107.5
ADG	0.27
MCE	5.2
Milk	24.5
MWW	56.4
YG	-0.17
Marb.	0.38
REA	0.23
API	142.9
TI	81



Lot 22 TT LEROY 859L

BD	Color	%Sim	BW/Ratio	205/Ratio	P/S
3/9/2023	BB	3/4 SM 1/4 AN	83/92	681/95	PP
GW PTO 345B					
GW PTO 536D					
GW MISS GOLD DIGGER 582A					
TT LEROY 859L Reg #: -4203288					
MAR INNOVATION 251					
TT MS INNOVATION 859F					
TT DREAM GIRL 859T					

A 3/4 blood PTO son out of a sweet Innovation daughter. This powerhouse has all the pieces. A G+ bull that will do an excellent job siring both steers and females.

EPDs	%
CE	13
BW	1.5
WW	79
YW	133.5
ADG	0.34
MCE	8.6
Milk	23.1
MWW	62.2
YG	-0.18
Marb.	0.48
REA	0.62
API	147.2
TI	84.5

Lot 23 TT LAD 614L

BD	Color	%Sim	BW/Ratio	205/Ratio	P/S
3/23/2023	BB	PB SM	91/101	720/101	PP
GW PTO 345B					
GW PTO 536D					
GW MISS GOLD DIGGER 582A					
TT LAD 614L Reg #: -4203393					
TT PROGRESS 215B					
TT MS PROGRESS 614D					
TT MS SUBSTANCE 414B					

This purebred PTO is yet another example of the complete package that he stamps in his calves. They are well balanced, stout made and super complete from end to end. Just an all-around bull that will get it done.

EPDs	%
CE	15.8
BW	-0.2
WW	77.5
YW	136.6
ADG	0.37
MCE	9.1
Milk	24.8
MWW	63.3
YG	-0.1
Marb.	0.61
REA	0.47
API	165.3
TI	93.6



REFERENCE SIRE **LBR DAKOTA PRIDE J68**

Sire: KRJ HZN DIRECT IMPACT F805 MGS: LBR GOLD RUSH B853

EPDs	CE	BW	WW	YW	ADG	MCE	MARB	YG	REA	API	TI
	14.9	0.2	89.4	142.6	0.33	7.9	0.27	-0.31	1.01	165.7	91.8

LBR Dakota Pride is our new addition to the bull battery. We purchased Pride for his growth traits while still maintaining reasonable birth weight. He has done all we had hoped for at this point. His offspring are modest frame, deep bodied while maintaining mass and muscle from end to end. We look forward to seeing him provide sons and daughters for years to come.



LOT 24 • TT LIGHTNING JACK 051L

Lot **24** **TT LIGHTNING JACK 051L**



BD	Color	%Sim	BW/Ratio	205/Ratio	P/S
3/31/2023	BB	3/4 SM 1/4 AN	83/96	783/109	PP

KRJ HZN DIRECT IMPACT F805
LBR DAKOTA PRIDE J68
LBR DAISY D68

TT LIGHTNING JACK 051L Reg #: 4203351
MGR TREASURE
TT MS TREASURE 051H
TT MS PTO 851F

EPDs	%
CE	18.2
BW	-2
WW	86.2
YW	152.8
ADG	0.42
MCE	11.5
Milk	26.1
MWW	70.2
YG	-0.01
Marb.	0.47
REA	0.44
API	171.9
TI	93.5

Pay attention here, this guy is out of our new herd sire LBR Dakota Pride. Powerhouse bull packed with performance. Moderate framed bull that is big topped along with big, massive rib. This guy will add extra pay weight and growth.

Lot **25** **TT LEWIS 004L**



BD	Color	%Sim	BW/Ratio	205/Ratio	P/S
3/14/2023	BB	PB SM	92/107	720/101	PP

KRJ HZN DIRECT IMPACT F805
LBR DAKOTA PRIDE J68
LBR DAISY D68

TT LEWIS 004L Reg #: 4203300
HOOK'S BLACK HAWK 50B
TT MS BLACK HAWK 004H
TT MS PROSPECTOR 804F

EPDs	%
CE	13.6
BW	1.1
WW	90.4
YW	143.2
ADG	0.33
MCE	6.6
Milk	24.8
MWW	69.8
YG	-0.33
Marb.	0.42
REA	1.17
API	160.9
TI	95.3

Another power packed Dakota Pride son, who qualified as a G+/ATM. Check out his growth EPD's at a 90 and 143, ranking him in the top 15 and 10%. Doing all this with a modest 1.0 BW EPD. A true power bull without excess birth weight.

Lot 26 TT LEONARDO 087L



BD	Color	%Sim	BW/Ratio	205/Ratio	P/S
4/15/2023	BB	PB SM	96/111	733/102	PP

KRJ HZN DIRECT IMPACT F805
LBRS DAKOTA PRIDE J68
LBR DAISY D68

TT LEONARDO 087L Reg #: -4203291

GW PTO 536D

TT MS PTO 087H

TT MS PROGRESS 794E

You are going to really like the Dakota Pride sons, they are consistently thick topped, big butted and deep bodied. Performance built in to add more pay weight and profit.

EPDs	%
CE	9.8
BW	2.7
WW	85.5
YW	142.8
ADG	0.36
MCE	4.4
Milk	22.4
MWW	64.9
YG	-0.21
Marb.	0.35
REA	0.93
API	152.3
TI	87.5

Lot 27 TT LONDON 829L



BD	Color	%Sim	BW/Ratio	205/Ratio	P/S
3/25/2023	BB	PB SM	86/97	742/104	PP

KRJ HZN DIRECT IMPACT F805
LBRS DAKOTA PRIDE J68
LBR DAISY D68

TT LONDON 829L Reg #: -4203386

TJ MAIN EVENT 503B

TT MS EVENT 529F

TT MS BUBBA 529C

Landon ranks in the top 15% for WW and YW. Indexed 104 within his contemporary group with a 742 adjusted weaning weight. This purebred bull will be a powerful addition for sireng replacement females and performance packed feeder calves.

EPDs	%
CE	14.3
BW	-0.3
WW	89
YW	137.7
ADG	0.3
MCE	8
Milk	27.2
MWW	71.4
YG	-0.33
Marb.	0.19
REA	1.02
API	159.5
TI	90.4



LOT 28 • TT LUCKENBACH 823L

Lot 28 TT LUCKENBACH 823L



BD	Color	%Sim	BW/Ratio	205/Ratio	P/S
3/27/2023	BB	PB SM	93/105	778/109	PP

KRJ HZN DIRECT IMPACT F805
LBRS DAKOTA PRIDE J68
LBR DAISY D68

TT LUCKENBACH 823L Reg #: -4203294

IR RANGE BARON B773

TT MS RANGE 823F

TT MS SUREBET 220Z

This top performer had a weaning weight ratio of 109, with a 788 adjusted 205-day weight. He ranks in the top 15% for weaning and top 10% for yearling weight. A powerful G+ bull with extra punch of pounds.

EPDs	%
CE	15
BW	2.3
WW	88.1
YW	142.9
ADG	0.34
MCE	7.8
Milk	24.9
MWW	68.7
YG	-0.35
Marb.	0.44
REA	1.12
API	163.4
TI	93.3

Lot 29 TT LINEMAN 808L



BD	Color	%Sim	BW/Ratio	205/Ratio	P/S
3/6/2023	BB	PB SM	89/100	739/103	PP

KRJ HZN DIRECT IMPACT F805
LBRS DAKOTA PRIDE J68
LBR DAISY D68

TT LINEMAN 808L Reg #: -4203341

TT COOPER 36Z

TT MS COOPER 808F

BTS ON TRACK 108Y

A power packed pedigree here in Lineman A Dakota Pride son that indexed 103 in his group. A G+ designation, this guy will add great value to his offspring. A solid stout Pride son you will not want to miss.

EPDs	%
CE	13.9
BW	0.2
WW	77.8
YW	124.1
ADG	0.29
MCE	6.1
Milk	29.4
MWW	68
YG	-0.39
Marb.	0.3
REA	0.7
API	155.4
TI	86.4

REFERENCE SIRE **TT FORWARD 668 F**

Sire: HOOK'S BEACON 56B MGS: TNT TUITION U238

EPDs	CE	BW	WW	YW	ADG	MCE	MARB	YG	REA	API	TI
	11.9	0.5	84.8	127.7	0.27	7.6	0.7	-0.3	1.22	173.7	98.6

TT Forward is a bull we retained that has done a wonderful job of siring high profit, high value offspring. He is unique in his pedigree and overall genetic profile.



LOT 30 • TT LAWTON 014L

REFERENCE SIRE **TT PROGRESS 215B**

Sire: G A R PROGRESS MGS: HOOKS SHEAR FORCE 38K

EPDs	CE	BW	WW	YW	ADG	MCE	MARB	YG	REA	API	TI
	21.9	-4.4	66.5	97.4	0.19	12.9	0.84	-0.06	0.36	178.4	92.8

TT Progress we had collected a number of years ago and went back to using him on heifers. He has sired some of the most prolific maternal females we have had around. They continue to raise high quality offspring.



LOT 31 • TT LONESTAR 178L

Lot **30** **TT LAWTON 014L**

BD	Color	%Sim	BW/Ratio	205/Ratio	P/S	EPDs	%
4/5/2023	B	PB SM	80/93	760/106	PP		
						CE	15.9 10
						BW	-0.4 20
						WW	82.2 30
						YW	127.6 25
						ADG	0.28 25
						MCE	9.1 10
						Milk	23 50
						MWW	63.9 40
						YG	-0.3 90
						Marb.	0.5 10
						REA	1.04 20
						API	167.5 10
						TI	93.8 10

HOOK'S BEACON 56B
TT FORWARD 668 F
TT MS TUITION 668D
TT LAWTON 014L Reg #: -4203434
CLRS FANFARE 654F
TT MS FANFAIR 043H
TT MS PTO 843F

Lawton is a later born calf that has performed well. Moderate framed with big top with extra volume, this guy will do it all. His daughters will perform well and steer mates with grow and add value.

Lot **31** **TT LONESTAR 178L**

BD	Color	%Sim	BW/Ratio	205/Ratio	P/S	EPDs	%
2/19/2023	B	1/2 SM 1/2 AN	75/	701/	PP		
						CE	19 4
						BW	-2.6 15
						WW	77.4 45
						YW	120.7 40
						ADG	0.27 45
						MCE	9.8 15
						Milk	28.3 20
						MWW	66.6 30
						YG	0 99
						Marb.	0.67 15
						REA	0.35 95
						API	160.2 15
						TI	92.9 15

G A R PROGRESS
TT PROGRESS 215B
TT MS FORCE 215Z
TT LONESTAR 178L Reg #: -4206805
TJ MAIN EVENT 503B
MS ALASKA 178J
SYS MS FRONTIER G68

Lonestar is a 1/2 blood heifer bull prospect with the ACE logo. This Progress son is impressively made being deep bodied and big topped. He also carries the G+ to move forward genetically with your future calf crops.

Lot **32** **TT LONE WOLF 138L**

BD	Color	%Sim	BW/Ratio	205/Ratio	P/S	EPDs	%
2/20/2023	BB	3/4 SM 1/4 AN	74/89	688/96	PP		
						CE	16.2 15
						BW	-2.1 15
						WW	69.1 75
						YW	109.4 65
						ADG	0.25 60
						MCE	8.9 20
						Milk	30.1 10
						MWW	64.4 35
						YG	-0.11 85
						Marb.	0.77 10
						REA	0.36 95
						API	162 10
						TI	90.1 20

G A R PROGRESS
TT PROGRESS 215B
TT MS FORCE 215Z
TT LONE WOLF 138L Reg #: -4203443
HOOK'S GUIDE LINE 97G
TT 138J
TT MS RANGE 838F

He is another heifer bull prospect with great value. Ranks in the top 10% for API and 20% for TI. A moderate framed bull that will sire excellent replacements. Do not miss out.



REFERENCE SIRE **BAR CK RED EMPIRE 9153G**

Sire: IR IMPERIAL D948 MGS: CDI VERDICT 220Y

EPDs	CE	BW	WW	YW	ADG	MCE	MARB	YG	REA	API	TI
	16.9	-2.4	72.8	113	0.25	9.9	0.52	-0.45	1.24	171.1	91.6

Bar CK Red Empire is a sire that offers a complete package of genetics and eye appeal. He provides excellent calving ease along with growth and high-end carcass traits.



LOT 33 • TT RED LASER 723L

REFERENCE SIRE **CLRS JACKPOT 8018J**

Sire: EGL FIRESTEEL 103F MGS: HOOK'S XPECTATION 36X

EPDs	CE	BW	WW	YW	ADG	MCE	MARB	YG	REA	API	TI
	13.4	1.1	86.7	130.6	0.27	3	0.44	-0.4	1.25	146.5	89.3

We purchased this hetero black sire to use on our hetero black females to make some outcross red pedigrees. Like most things it takes time and patience to accomplish progress in this species. Jackpot did just what we had hoped, we do have some outcross red pedigreed sons and daughters that are flat out good. Watch for them going forward.



LOT 34 • TT LEXINGTON 869L

Lot **33** **TT RED LASER 723L**



BD	Color	%Sim	BW/Ratio	205/Ratio	P/S
2/26/2023	R	PB SM	88/	723/	PP
IR IMPERIAL D948					
BAR CK RED EMPIRE 9153G					
WS MISS NORTHSTAR B180					
TT RED LASER 723L Reg #: -4203455					
W/C EXECUTIVE ORDER 8543B					
HILB MISS VERSACE E57C					
AJE MS CHANEL Y32					

EPDs	%
CE	16.6
BW	-2
WW	73.5
YW	111.8
ADG	0.24
MCE	8.1
Milk	24.2
MWW	60.7
YG	-0.32
Marb.	0.32
REA	0.92
API	150.3
TI	85.9

Red Lazer is a result of an embryo package we had purchased. A Red Empire that has been impressive from the beginning. He is well balanced with mass, volume, and muscle. Make sure you look him up on sale day.

Lot **34** **TT LEXINGTON 869L**



BD	Color	%Sim	BW/Ratio	205/Ratio	P/S
3/22/2023	R	3/4 SM 1/4 AN	98/109	810/113	PP
EGL FIRESTEEL 103F					
CLRS JACKPOT 8018J					
HOOK'S FREDERICA 18F					
TT LEXINGTON 869L Reg #: -4203314					
HOOK'S BEACON 56B					
TT MS BEACON 869F					
KINNS MS ANSWER 669D					

EPDs	%
CE	12.7
BW	1.1
WW	88
YW	133.8
ADG	0.29
MCE	6.2
Milk	29.5
MWW	73.2
YG	-0.31
Marb.	0.57
REA	1.12
API	158.4
TI	92.9

Lexington is a truly unique outcross red bull. Study his pedigree and you will see he is a out of two black parents. His sire we purchased just for this; we are using him on hetero black cows to these outcross reds. Lexington's dam is a Beacon out of the high selling bred at the ND State Sale we purchased from Kinn's. He is a bigger framed powerhouse who will add growth and performance.





REFERENCE SIRE **GW HILGER ONE 454H**

Sire: GW MOVIN ON 183C MGS: GW YUKON JACK 612B

EPDs	CE	BW	WW	YW	ADG	MCE	MARB	YG	REA	API	TI
	11.1	-0.1	99	152.1	0.33	4.6	0.45	-0.26	0.96	157.6	97.5

GW Hilger One we sampled for his unique EPD profile. He offers calving ease with top 2% growth for weaning and yearling. These cattle are moderate with muscle expression and upper end carcass.



LOT 35 • TT LAVA 200L



Lot **35** **TT LAVA 200L**

BD	Color	%Sim	BW/Ratio	205/Ratio	P/S	EPDs	%
3/6/2023	R	PB SM	91/101	787/110	PP	CE	10.5 65
						BW	0.9 45
						WW	89.9 15
						YW	130.2 25
						ADG	0.25 45
						MCE	7.2 30
						Milk	28.1 15
						MWW	72.8 10
						YG	-0.33 80
						Marb.	0.09 65
						REA	1.05 20
						API	136.6 40
						TI	85.9 30

GW MOVIN ON 183C
 GW HILGER ONE 454H
 GW MISS YUKON JACK 913E
TT LAVA 200L Reg #: -4203323
 HSF MAJORITY 141S
 TT MS MAJORITY 200Z
 KSR RED PASSION 400N

Lava is another exciting prospect out of Hilger. His mother is one of our last Majority daughters that continues to get it done year after year. Lava indexed 110 in the contemporary group, not bad for an 11-year-old cow. A big powerful bull that will impress.



LOT 36 • TT LAREDO 131L

Lot 36 TT LAREDO 131L



BD	Color	%Sim	BW/Ratio	205/Ratio	P/S
2/15/2023	R	5/8 SM 1/4 AR 1/8 AN	81/97	723/101	PP
GW MOVIN ON 183C					
GW HILGER ONE 454H					
GW MISS YUKON JACK 913E					
TT LAREDO 131L Reg #: -4203408					
TT FIREBALL 280B					
TT MS FIREBALL 131J					
KS MISS ALL IN C931					

Another Hilger son that has the look. He is stout with extra meat and muscle. Out of an exciting young Fireball female that will continue to excel in the future.

EPDs	%
CE	13.8
BW	-0.6
WW	87.2
YW	133.3
ADG	0.29
MCE	7.9
Milk	29.1
MWW	72.5
YG	-0.22
Marb.	0.26
REA	0.89
API	134.9
TI	86.4

Lot 37 TT LAWMAN 170L



BD	Color	%Sim	BW/Ratio	205/Ratio	P/S
2/19/2023	R	3/4 SM 5/32 AR 3/32 AN	73/88	706/99	PP
GW MOVIN ON 183C					
GW HILGER ONE 454H					
GW MISS YUKON JACK 913E					
TT LAWMAN 170L Reg #: -4203439					
TT FIREBALL 280B					
TT MS FIREBALL 490J					
TT MS REDZONE 490B					

Hilger X Fireball once again, this combo works well. Lawman is a heifer bull prospect with plenty of growth and performance. On top of that it looks like these will make great females as well.

EPDs	%
CE	16.2
BW	-2.4
WW	77.3
YW	111.7
ADG	0.22
MCE	8.4
Milk	26.5
MWW	64.9
YG	-0.26
Marb.	0.28
REA	0.67
API	145.3
TI	83



LOT 38 • TT LANDMARK 045L

Lot 38 TT LANDMARK 045L



BD	Color	%Sim	BW/Ratio	205/Ratio	P/S
3/9/2023	R	3/4 SM 5/32 AR 3/32 AN	86/99	700/98	PP
GW MOVIN ON 183C					
GW HILGER ONE 454H					
GW MISS YUKON JACK 913E					
TT LANDMARK 045L Reg #: -4203306					
IR IMPERIAL D948					
TT MS IMPERIAL 045H					
TT MS SIRLOIN 845F					

Consistently good as here is another Hilger son. They were born light and grew impressively throughout the summer. Landmark is a G+/ATM bull that will add pay weight to his calf crops for extra income.

EPDs	%
CE	11.4
BW	-0.3
WW	85.4
YW	130.8
ADG	0.28
MCE	5.3
Milk	20.8
MWW	63.2
YG	-0.19
Marb.	0.51
REA	0.77
API	151.9
TI	90.1



REFERENCE SIRE **SRF MAJOR MOVE 145J**

Sire:GW MAJOR MOVE 590E MGS: HOOKS SHEAR FORCE 38K

EPDs	CE	BW	WW	YW	ADG	MCE	MARB	YG	REA	API	TI
	9.9	0.2	83.9	123	0.24	3.5	0.33	-0.41	1.24	158.7	90

SRF Major Move was our choice of the 2022 Edge of the West sale. He is our senior herd sire for the reds and has fulfilled all expectations. He sires them deep bodied, stout made with tremendous muscle pattern. Along with that he provides a genetic EPD profile that is flawless.



LOT 39 • TT LUBBOCK 639L

Lot **39** TT LUBBOCK 639L



BD	Color	%Sim	BW/Ratio	205/Ratio	P/S
3/19/2023	R	PB SM	104/116	801/112	PP

GW MAJOR MOVE 590E
SRF MAJOR MOVE 145J
SRF MISS 541C

TT LUBBOCK 639L Reg #: -4203385

HOOK'S RED ZONE 79Z
TT MS RED ZONE 639D
KSR FREEDOM 839T

EPDs	%
CE	8.5
BW	2.2
WW	88
YW	134.2
ADG	0.29
MCE	4.4
Milk	29.4
MWW	73.1
YG	-0.49
Marb.	0.24
REA	1.23
API	141.8
TI	87.9

Want to pay attention here, Lubbock is out of our new Major Moves sire from SRF. Lubbock is an absolute stud. He is a powerpack bull with massive top and rear quarter. Dark cherry red with a big, massive body. He puts it all together in one fine package.

Lot **40** TT LOADED 930L



BD	Color	%Sim	BW/Ratio	205/Ratio	P/S
3/22/2023	R 5/8 SM	5/16 AR 1/16 AN	89/100	764/107	PP

GW MAJOR MOVE 590E
SRF MAJOR MOVE 145J
SRF MISS 541C

TT LOADED 930L Reg #: -4203373

H2R PROFITBUILDER B403
TT MS PROFITBUILDER 930G
TT MS EIGHTBALL 730E

EPDs	%
CE	11.8
BW	-0.2
WW	81.4
YW	123.2
ADG	0.26
MCE	6.3
Milk	32.3
MWW	72.7
YG	-0.13
Marb.	0.43
REA	0.67
API	144.3
TI	86.3

Loaded is just that, Loaded. He tallied a 107 index with a 764 adjusted weaning weight. He puts it all together in one awesome package. He is stout from fore to rear, big middled and correct overall.



LOT 41 • TT LONESOME DOVE 092L

Lot 41 TT LONESOME DOVE 092L



BD	Color	%Sim	BW/Ratio	205/Ratio	P/S
3/2/2023	R 3/4 SM	3/16 AR 1/16 AN	86/99	702/98	PP

GW MAJOR MOVE 590E
 SRF MAJOR MOVE 145J
 SRF MISS 541C
TT LONESOME DOVE 092L Reg #: -4203358
 TT ELITE 610E
 TT MS IMPERIAL 092H
 TT MS REDZONE 490B

EPDs	%
CE	11.8
BW	0.5
WW	84.3
YW	126.5
ADG	0.26
MCE	5.1
Milk	26.7
MWW	68.6
YG	-0.45
Marb.	0.41
REA	1.18
API	156.2
TI	87.6

Lonesome Dove is another big stout Major son with extra thickness and power. These guys are extremely consistent in their overall design. Built for the commercial cow man these sons will perform with pounds and profit.



LOT 42 • TT LEGACY 900L

Lot 42 TT LEGACY 900L



BD	Color	%Sim	BW/Ratio	205/Ratio	P/S
3/10/2023	R 3/4 SM	5/32 AN 3/32 AR	75/85	736/103	PP

GW MAJOR MOVE 590E
 SRF MAJOR MOVE 145J
 SRF MISS 541C
TT LEGACY 900L Reg #: -4203398
 IR PROSPECTOR C870
 TT MS PROSPECTOR 900G
 TT MS TOUCHDOWN 700E

EPDs	%
CE	16.2
BW	-1.6
WW	76.6
YW	108
ADG	0.2
MCE	8.2
Milk	34
MWW	72.1
YG	-0.41
Marb.	0.38
REA	0.96
API	147.3
TI	85.4

Check out this unique package. Legacy is labeled an ACE/G+ bull, to qualify his as a heifer bull prospect. This star faced bull is big bodied dark red with plenty of power. Do not miss him on sale day with plenty of growth and performance. On top of that it looks like these will make great females as well.

Lot 43 TT LEAP AHEAD 820L



BD	Color	%Sim	BW/Ratio	205/Ratio	P/S
3/21/2023	R 5/8 SM	5/16 AR 1/16 AN	102/114	671/94	PP

GW MAJOR MOVE 590E
 SRF MAJOR MOVE 145J
 SRF MISS 541C
TT LEAP AHEAD 820L Reg #: -4203282
 H2R PROFITBUILDER B403
 TT MS PROFITBUILDER 820F
 TT ARELLA 320A

EPDs	%
CE	7.6
BW	-1
WW	73.9
YW	109.9
ADG	0.23
MCE	4.1
Milk	24.2
MWW	60.9
YG	-0.24
Marb.	0.52
REA	0.6
API	149.9
TI	83.9

Leap Ahead with this Major Moves son. A G+ designation, he will move you forward genetically with higher profit cattle.

The Elite 8

The ELITE 8 is an opportunity to own our best. We again have selected some of our top female prospects for you. We will retain the right of one flush on each of these females. We could not let this quality of females go without this opportunity to maintain their genetics. Take some time and analyze these elite females.



LOT 44 • TT MS TRUSTEE 277K

Lot 44 TT MS TRUSTEE 277K

ELITE
eight

BD	Color	%Sim	BW/Ratio	205/Ratio	P/S	EPDs		%
2/26/2022	R	3/4 SM 1/4 AR	85/106	563/105	PP	CE	13.5	40
						BW	0.4	55
						WW	88.9	10
						YW	134.7	20
						ADG	0.29	35
						MCE	7	50
						Milk	30.3	10
						MWW	74.5	5
						YG	-0.4	10
						Marb.	0.36	50
						REA	0.89	20
						API	140.9	35
						TI	89.6	20

CDI REVIVAL 370D
 CDI TRUSTEE 387F
 CDI MISS HOMETOWN 163C
TT MS TRUSTEE 277K Reg #: 4090469
 SCHULER REBEL 0029X
 KS MISS REBEL D176
 KS BETTE B800

A special one here. A red Trustee daughter that is big bodied and thick from end to end. This girl has all the pieces and power to be a special one. Due around 3/20/24 with heifer calf, by LRS Cornerstone.



Elite 8

LOT 45 • TT MS DREAM ON 274K

Lot 45 TT MS DREAM ON 274K

BD	Color	%Sim	BW/Ratio	205/Ratio	P/S
3/11/2022	BR	PB SM	70/92	600/101	PP

NICHOLS LEGACY G151

CNS DREAM ON L186

CNS SHEEZA DREAM K107W

TT MS DREAM ON 274K Reg #: 4090440

MR NLC CHUM 6122D

SRF MISS 974G

SRF MISS 51U

Look at this baldie. A super eye appealing female with class. This Dream On daughter has the look to go places. She is bred to LRS Cornerstone with a heifer calf due around 3/24/24.

EPDs	%
CE 13.3	25
BW 0.1	30
WW 69.7	80
YW 92.4	95
ADG 0.14	99
MCE 9	10
Milk 16.3	95
MWW 50.9	95
YG -0.54	3
Marb. 0.13	60
REA 0.93	40
API 131.7	50
TI 75.3	70

Lot 46 TT MS GUARDIAN 209K

BD	Color	%Sim	BW/Ratio	205/Ratio	P/S
3/4/2022	BB	PB SM	72/97	508/85	PP

HOOK'S BEACON 56B

CLRS GUARDIAN 317G

CLRS ALWAYS XCELLENT

TT MS GUARDIAN 209K Reg #: 4090455

HOOK'S BLACK HAWK 50B

TT MS BLACK HAWK 006H

TT MS COOPER 806F

This Guardian stacks the numbers. She ranks top 2% for API and Top 5% for TI. Bred to Schooley Haggard with a bull calf, due around 2/23/24.

EPDs	%
CE 17	4
BW -4	1
WW 76.6	55
YW 116.2	50
ADG 0.25	45
MCE 9.1	10
Milk 28.6	15
MWW 66.7	30
YG -0.39	55
Marb. 0.58	5
REA 1.11	15
API 181.5	2
TI 97.6	5

Elite 8



CLRS GUARDIAN 317G • SIRE OF LOT 46



Elite 8

LOT 47 • TT MS SNIPER 264K

Lot 47 TT MS SNIPER 264K

BD	Color	%Sim	BW/Ratio	205/Ratio	P/S
2/26/2022	R	PB SM	80/	668/	PP
BAR CK HUNTER 3006A					
KBHR SNIPER E036					
KBHR C078					
TT MS SNIPER 264K Reg #: 4090604					
HOOK'S RED ZONE 79Z					
TT MS RED ZONE 698D					
TT MS CONQUEST 498B					

An embryo daughter out of a sweet Red Zone female that earned her way to the donor pen. This Sniper heifer is moderate framed with a big bold rib with lots of capacity. An elite heifer with tons of potential. She is due around 2/21/24 with a heifer calf by Red Empire.

EPDs	%
CE	16.2
BW	1.5
WW	96.5
YW	142.7
ADG	0.29
MCE	9.8
Milk	27
MWW	75
YG	-0.38
Marb.	0.33
REA	1.18
API	142.1
TI	96.2

Lot 48 TT LAINEY 371L

BD	Color	%Sim	BW/Ratio	205/Ratio	P/S
3/18/2023	BB	1/2 SM 1/2 AN	67/85	592/97	PP
EGL FIRESTEEL 103F					
SCHOOLEY HAGGARD A411H					
SCHOOLEY MISS 3000A 823F					
TT LAINEY 371L Reg #: -4203326					
S A V FINAL ANSWER 0035					
TT MS ANSWER 871F					
TT MS BOZEMAN 671D					

TT Lainey is a one-of-a-kind heifer with elite look and EPD's. She ranks top 1% in API with a 192, Top 1% TI at 104. She also excels with top 1% marbling with 1.1. You will have to look long and hard to find a female with this profile and the striking look she possesses. We will retain the rights of 6 transferrable embryos on this heifer.

EPDs	%
CE	20.6
BW	-3.7
WW	76.5
YW	115
ADG	0.24
MCE	11.7
Milk	26.7
MWW	64.7
YG	0.02
Marb.	1.09
REA	0.22
API	191
TI	103.7

Elite 8



LOT 48 • TT LAINEY 371L



Elite 8

LOT 49 • TT LEXI 323L

Lot 49 TT LEXI 323L

BD	Color	%Sim	BW/Ratio	205/Ratio	P/S
3/8/2023	BB	3/4 SM 1/4 AN	72/95	590/97	PP

WS PROCLAMATION E202
KBHR BOLD RULER H152
BAR CK MS X38 106Z

TT LEXI 323L Reg #: -4203292

SYDGEN ENHANCE
TT MS ENHANCE 023H
TT MS RANGE 823F

TT Lexi is another extra special heifer with an EPD profile that could be matched by very few. She is top 2% for API, top 1% TI, Top 4 marbling along with top 10% for weaning and top 2% yearling. A rare find to have all this and a heifer as striking as Lexi. We will retain the right of 6 transferable embryos.

EPDs	%
CE	18.1
BW	0.1
WW	92.5
YW	155.6
ADG	0.39
MCE	10.7
Milk	27.4
MWW	74.4
YG	-0.19
Marb.	0.83
REA	0.82
API	181.4
TI	104.4



Elite 8

LOT 50 • TT LIBERTY 327L

Lot 50 TT LIBERTY 327L

BD	Color	%Sim	BW/Ratio	205/Ratio	P/S
2/18/2023	BB	1/2 SM 1/2 AN	70/96	624/103	PP

G A R ASHLAND
G A R HOME TOWN
CHAIR ROCK SURE FIRE 6095

TT LIBERTY 327L Reg #: -4203415

HOOK'S GUIDE LINE 97G
TT MS GUIDELINE 127J
TT MS RANGE 823F

TT Liberty is a 1/2 Hometown daughter that is conservative frame with tremendous rib and volume. An easy keeping female with big time EPD profile. We can only let these type of females be offered by retaining some of their genetics. We will retain the rights for 6 transferrable embryos at our expense.

EPDs	%
CE	16.6
BW	-1.2
WW	67.7
YW	114.1
ADG	0.29
MCE	10.2
Milk	24.2
MWW	58.1
YG	-0.15
Marb.	0.81
REA	0.85
API	159.3
TI	89.3



Elite 8

LOT 51 • TT LACEY 305L

Lot 51 TT LACEY 305L

BD	Color	%Sim	BW/Ratio	205/Ratio	P/S
2/24/2023	R	PB SM	79/	597/	PP

GW MOVIN ON 183C
GW HILGER ONE 454H
GW MISS YUKON JACK 913E

TT LACEY 305L Reg #: -4203412

HOOK'S RED ZONE 79Z
TT MS REDZONE 490B
TT MS MAJORITY 190Y

A red embryo heifer out of Hilger One and our 490 Red Zone donor cow. Another elite female with a combination of EPD profile and overall class and appearance. Lacey holds top 10% growth; she will raise high growth offspring that will be sought after. We will retain the rights for 6 transferrable embryos at our expense.

EPDs	%
CE	12.4
BW	2.5
WW	93.4
YW	145.9
ADG	0.33
MCE	5.6
Milk	23.1
MWW	69.6
YG	-0.42
Marb.	0.3
REA	1.15
API	150.9
TI	92.3

BRED females

Lot 52 TT MS EPIC 295K

BD	Color	%Sim	BW/Ratio	205/Ratio	P/S
2/23/2022	BB	PB SM	79/99	547/102	PP
WS ALL-AROUND Z35					
OMF EPIC E27					
OMF TIME LESS B100					
TT MS EPIC 295K Reg #: 4090483					
HOOKS SHEAR FORCE 38K					
KNH HAZEL 295Y					
KS MISS 004 U295					

A sweet made Epic daughter with a load of potential. She is bred to LRS Cornerstone with a bull to calve around 3/1/24.

EPDs		%
CE	12	40
BW	0.7	40
WW	77.4	50
YW	113	55
ADG	0.22	70
MCE	6.1	45
Milk	26.6	25
MWW	65.1	35
YG	-0.39	55
Marb.	0.03	80
REA	0.95	35
API	129.9	55
TI	77.5	60

Lot 53 TT MS BLACK HAWK 207K

BD	Color	%Sim	BW/Ratio	205/Ratio	P/S
3/5/2022	BR	PB SM	82/110	726/115	PP
HOOK'S XAVIER 14X					
HOOK'S BLACK HAWK 50B					
HOOK'S YVETTE 100Y					
TT MS BLACK HAWK 207K Reg #: 4090446					
TT EPIC 049E					
TT MS PROSPECT 007H					
GVF MISS SPARTAN 208C					

Here is a Blackhawk that puts together a nice EPD profile with style. Bred to LRS Cornerstone and due around 4/15/24.

EPDs		%
CE	10.9	60
BW	0.7	40
WW	91.6	10
YW	137.3	15
ADG	0.29	20
MCE	5.5	60
Milk	23.8	45
MWW	69.4	20
YG	-0.4	50
Marb.	0.17	50
REA	1.47	1
API	144.6	30
TI	89.3	20

Lot 54 TT MS PTO 232K

BD	Color	%Sim	BW/Ratio	205/Ratio	P/S
3/23/2022	BB	3/4 SM 1/4 AN	80/100	592/	PP
GW PTO 345B					
GW PTO 536D					
GW MISS GOLD DIGGER 582A					
TT MS PTO 232K Reg #: 4090504					
TJ MAIN EVENT 503B					
ADV MS MAIN EVENT E7032					
TRPH MS CATALYST A384					

Here is an opportunity for a PTO daughter out of our 7032 donor. She is one sweet made heifer with body and mass. Bred to LRS Cornerstone and due around 4/24/24.

EPDs		%
CE	14.2	30
BW	-0.1	45
WW	86.3	15
YW	147.6	10
ADG	0.38	3
MCE	6.8	50
Milk	31	10
MWW	73.9	10
YG	-0.07	90
Marb.	0.43	40
REA	0.46	90
API	153	20
TI	90.3	20



LOT 54 • TT MS PTO 232K



LOT 56 • TT MS LOGIC 235K

Lot 55 TT 249K

BD	Color	%Sim	BW/Ratio	205/Ratio	P/S	EPDs	%
3/28/2022	BB	PB SM	72/94	/	PP	CE	14.1 20
						BW	-0.9 15
						WW	77.9 50
						YW	131.8 20
						ADG	0.34 5
						MCE	8.5 15
						Milk	25.9 30
						MWW	64.6 35
						YG	-0.03 99
						Marb.	0.74 2
						REA	0.3 99
						API	176 3
						TI	97.1 5

GW PTO 345B
 GW PTO 536D
 GW MISS GOLD DIGGER 582A
 TT 249K Reg #: 4090520
 HOOK'S BEACON 56B
 TT MS BEACON 940G
 TT MS PROPHET 525C

Here is a rare find here. Another chance for a PTO daughter out of a Beacon female. Bred to LRS Cornerstone with a bull due around 3/27/24.

Lot 56 TT MS LOGIC 235K

BD	Color	%Sim	BW/Ratio	205/Ratio	P/S	EPDs	%
2/19/2022	BB	PB SM	75/	654/	PP	CE	11.1 55
						BW	1 45
						WW	93.5 10
						YW	142.2 10
						ADG	0.3 20
						MCE	8.8 15
						Milk	28.5 15
						MWW	75 5
						YG	-0.29 90
						Marb.	0.24 35
						REA	1.01 25
						API	146.2 25
						TI	92 15

CCR COWBOY CUT 5048Z
 SFG COWBOY LOGIC D627
 SFG QUEEN B01
 TT MS LOGIC 235K Reg #: 4090594
 HOOKS ATLANTIC 18A
 TT MS ATLANTIC 533C
 TT MS EIGHT BALL 133Y

A Cowboy Logic female with top 10% growth. An embryo heifer out of a tremendous Atlantic cow. Bred to LRS Cornerstone with a heifer due around 3/27/24.



LOT 57 • TT MS BLACK HAWK 220K

Lot 57 TT MS BLACK HAWK 220K

BD	Color	%Sim	BW/Ratio	205/Ratio	P/S	EPDs	%
3/1/2022	BB	3/4 SM 1/4 AN	68/92	575/97	P	CE	17.1 10
						BW	-2.6 15
						WW	74.4 55
						YW	112.9 60
						ADG	0.24 65
						MCE	8.6 25
						Milk	24.7 45
						MWW	61.6 50
						YG	-0.25 45
						Marb.	0.48 30
						REA	0.93 20
						API	156.9 15
						TI	86.6 30

HOOK'S XAVIER 14X
 HOOK'S BLACK HAWK 50B
 HOOK'S YVETTE 100Y
 TT MS BLACK HAWK 220K Reg #: 4090461
 WS PROCLAMATION E202
 TT HADLEY 021H
 TT MS PROGRESS 421B

Another great opportunity with the Black Hawk daughter out of a Proclamation female. Big stout heifer here that will be a great producer. Bred to LRS Cornerstone with a bull calf due around 3/13/24.

OPEN females

Lot 58 TT MS PTO 339L

BD	Color	%Sim	BW/Ratio	205/Ratio	P/S	EPDs	%
4/14/2023	BB	PB SM	85/111	616/101	PP	CE	9.6 75
						BW	1.8 60
						WW	74.2 65
						YW	126.6 30
						ADG	0.33 10
						MCE	5.8 50
						Milk	24.7 40
						MWW	61.6 50
						YG	-0.11 99
						Marb.	0.52 10
						REA	0.46 99
						API	156.1 15
						TI	85.7 30

GW PTO 345B
 GW PTO 536D
 GW MISS GOLD DIGGER 582A
TT MS PTO 339L Reg #: -4203361
 GW PTO 536D
 TT MS PTO 939G
 TT MS ATLANTIC 533C

Here is your chance to tie into a PTO daughter. We cannot keep them all. She is a sweet made long sided heifer with big volume. Do not miss this opportunity.

Lot 59 TT MS PRIDE 324L

BD	Color	%Sim	BW/Ratio	205/Ratio	P/S	EPDs	%
3/22/2023	BB	PB SM	85/111	601/99	PP	CE	14.9 15
						BW	1 45
						WW	88 15
						YW	145.2 10
						ADG	0.36 3
						MCE	7.1 30
						Milk	23.3 50
						MWW	67 25
						YG	-0.32 80
						Marb.	0.36 20
						REA	1 25
						API	160.7 10
						TI	92.7 15

KRJ HZN DIRECT IMPACT F805
 LBRS DAKOTA PRIDE J68
 LBR DAISY D68
TT MS PRIDE 324L Reg #: -4203312
 HOOK'S EAGLE 6E
 SRF MISS 920G
 SRF MISS 109Y

An all-around good Dakota Pride female with lots of opportunity.

Lot 60 TT MS FORWARD 303L

BD	Color	%Sim	BW/Ratio	205/Ratio	P/S	EPDs	%
4/13/2023	BB	3/4 SM 1/4 AN	80/102	590/103	PP	CE	10 85
						BW	0.8 60
						WW	80.4 35
						YW	118.4 45
						ADG	0.24 65
						MCE	6.1 65
						Milk	29.9 10
						MWW	69.9 15
						YG	-0.18 65
						Marb.	0.45 35
						REA	0.7 50
						API	152.3 20
						TI	84.5 35

HOOK'S BEACON 56B
 TT FORWARD 668 F
 TT MS TUITION 668D
TT MS FORWARD 303L Reg #: -4203364
 S A V FINAL ANSWER 0035
 BTS MS ANSWER 201Z
 BTS MS DEX 025X

A big time female here in this Forward, out of the 201-donor female, she is a long-bodied heifer with tons of power and performance.

Lot 61 TT MS JACKPOT 390L

BD	Color	%Sim	BW/Ratio	205/Ratio	P/S	EPDs	%
3/24/2023		3/4 SM 1/8 AN 1/8 AR	94/120	626/110	PP	CE	9.3 90
						BW	2.8 90
						WW	89.8 10
						YW	141.4 10
						ADG	0.32 20
						MCE	3.1 95
						Milk	27.3 25
						MWW	71.9 10
						YG	-0.26 40
						Marb.	0.31 60
						REA	0.99 15
						API	125.6 60
						TI	84.9 35

EGL FIRESTEEL 103F

CLRS JACKPOT 8018J

HOOK'S FREDERICA 18F

Reg #: -4203278

TT FIREBALL 280B

TT MS FIREBALL 892F

TT MS ATLANTIC 692D

Here is a sweet one. She has all the pieces to be a great one. Unique pedigree with eye appeal.

EGL FIRESTEEL 103F
 CLRS JACKPOT 8018J
 HOOK'S FREDERICA 18F
TT MS JACKPOT 390L Reg #: -4203278
 TT FIREBALL 280B
 TT MS FIREBALL 892F
 TT MS ATLANTIC 692D

Here is a sweet one. She has all the pieces to be a great one. Unique pedigree with eye appeal.



LOT 62 • TT MS FORWARD 350L

Lot 62 TT MS FORWARD 350L

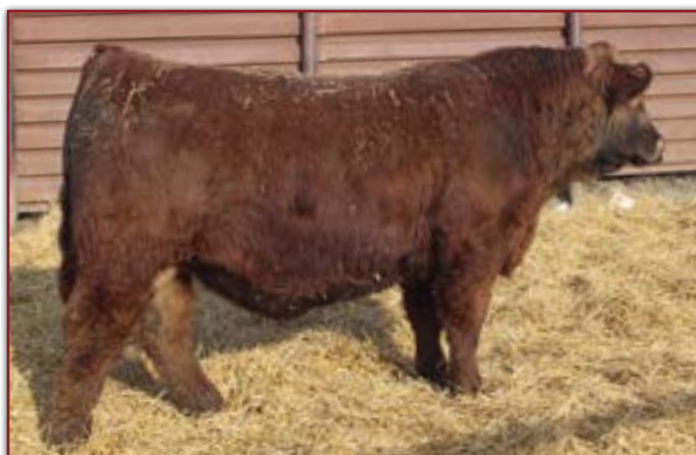
BD	Color	%Sim	BW/Ratio	205/Ratio	P/S	EPDs	%
3/15/2023	R	PB SM	55/71	555/97	PP	CE	15.2 10
						BW	-0.3 25
						WW	76.7 55
						YW	112.4 60
						ADG	0.22 70
						MCE	10.2 4
						Milk	28.5 15
						MWW	66.6 30
						YG	-0.47 20
						Marb.	0.14 55
						REA	1.18 10
						API	148.8 25
						TI	82.1 40

HOOK'S BEACON 56B
 TT FORWARD 668 F
 TT MS TUITION 668D
TT MS FORWARD 350L Reg #: -4203307
 CDI HOMETOWN 246A
 TT MS HOMETOWN 800F
 TT MS MAJORITY 200Z

A red Forward female with an outcross pedigree. Nice made heifer with all around good numbers and style.



LOT 63 • TT MS MAJOR 389L



SRF MAJOR MOVE 145J • SIRE OF LOTS 63-67

Lot **63** TT MS MAJOR 389L

BD	Color	%Sim	BW/Ratio	205/Ratio	P/S	EPDs		%
3/7/2023	R	PB SM	89/113	567/99	PP	CE	5.3	99
GW MAJOR MOVE 590E						BW	3.1	90
SRF MAJOR MOVE 145J						WW	81.7	35
SRF MISS 541C						YW	125.3	30
TT MS MAJOR 389L Reg #: -4203435						ADG	0.27	35
RFS RED IRON T20						MCE	2	99
TT MS RED IRON 689D						Milk	24.1	45
KSR CURL 889T						MWW	64.7	35
Here is a female out of Major Moves that is a powerhouse. She is big, deep, and thick. You will not want to miss this one.						YG	-0.43	35
						Marb.	0.11	65
						REA	1.22	5
						API	123.5	65
						TI	78.3	55

Lot **64** TT MS MAJOR 393L

BD	Color	%Sim	BW/Ratio	205/Ratio	P/S	EPDs		%
3/30/2023	R	PB SM	93/118	738/	PP	CE	6.7	95
GW MAJOR MOVE 590E						BW	2	65
SRF MAJOR MOVE 145J						WW	88.3	15
SRF MISS 541C						YW	124.6	30
TT MS MAJOR 393L Reg #: -4203421						ADG	0.23	60
WS BEEF MAKER R13						MCE	2.3	99
TT MS BEEF MAKER 593C						Milk	30.8	10
KR MS RODGE Z93						MWW	74.7	10
Another great Major heifer with mass and volume. She will raise you some big ones.						YG	-0.52	5
						Marb.	0.03	80
						REA	1.5	1
						API	131.4	50
						TI	82.4	40

LOT 64 • TT MS MAJOR 393L



LOT 65 • TT MS MAJOR 318L

Lot **65** **TT MS MAJOR 318L**

BD	Color	%Sim	BW/Ratio	205/Ratio	P/S	EPDs		%
3/21/2023	R	3/4 SM 3/16 AR 1/16 AN	76/100	611/107	PP	CE	13	45
<div>GW MAJOR MOVE 590E</div> <div>SRF MAJOR MOVE 145J</div> <div>SRF MISS 541C</div> <div>TT MS MAJOR 318L Reg #: -4203289</div> <div>TT FIREBALL 280B</div> <div>TT MS FIREBALL 018H</div> <div>TT MS HOMETOWN 800F</div> <div>Take a look here, this female possesses big time potential.</div> <div>She is a big massively made female with extreme potential.</div>						BW	-0.5	35
						WW	83.1	25
						YW	122.4	40
						ADG	0.25	60
						MCE	7.3	45
						Milk	34.3	2
						MWW	75.6	4
						YG	-0.35	15
Marb.	0.24	75						
REA	1.14	4						
						API	132.1	50
						TI	84.1	35

Lot **66** **TT MS MAJOR 388L**

BD	Color	%Sim	BW/Ratio	205/Ratio	P/S	EPDs	%	
3/28/2023	R	5/8 SM 5/16 AR 1/16 AN	68/86	489/86	P	CE	15.8	20
GW MAJOR MOVE 590E						BW	-1.4	25
SRF MAJOR MOVE 145J						WW	70	70
SRF MISS 541C						YW	100	85
TT MS MAJOR 388L Reg #: -4203287						ADG	0.19	95
SCHULER REBEL 0029X						MCE	8	35
TT MS REBEL 798E						Milk	31.6	5
KS MISS AUTHORITY C598						MWW	66.4	30
High quality red heifer that is moderate framed that will be easy fleshing. All the needs to add profit to your herd.						YG	-0.15	75
						Marb.	0.27	65
						REA	0.42	90
						API	144.9	30
						TI	76.9	65

Lot **67** **TT MS MAJOR 396L**

BD	Color	%Sim	BW/Ratio	205/Ratio	P/S	EPDs	%	
4/11/2023	R	PB SM	85/108	639/112	PP	CE	8.8	85
GW MAJOR MOVE 590E						BW	3.3	90
SRF MAJOR MOVE 145J						WW	92.4	10
SRF MISS 541C						YW	134.9	15
TT MS MAJOR 396L Reg #: -4203442						ADG	0.27	35
HOOK'S RED ZONE 79Z						MCE	3.6	90
TT MS RED ZONE 699D						Milk	28.9	15
TT MS MAJORITY						MWW	74.9	5
High performance heifer with lots of growth. She indexed 112 within her group.						YG	-0.42	40
						Marb.	0.31	25
						REA	1.12	10
						API	147.3	25
						TI	90.3	20



SimGenetics
PROFIT THROUGH SCIENCE
American Simmental Association

AMERICA'S COW

The **Simmental** cow can handle any environment.

She's built to last in heat, fescue or high altitudes. And thanks to the breed's built-in adaptability, you can match Simmental genetics to your environment – **SimAngus**, **SimAngus HT**, **Simbrah** or proven Simmental genetics.

Meet America's all-purpose cow – gentle and consistent, with calves that give the heterosis boost commercial cattlemen need to stay profitable.

STAND STRONG SIMMENTAL

406-587-4531 • simmental.org



LOT 68 • TT MS FORWARD 348L



HOOK'S BEACON 55B • GRANDSIRE OF LOT 68

Lot **68** TT MS FORWARD 348L

BD	Color	%Sim	BW/Ratio	205/Ratio	P/S
3/25/2023	BR	PB SM	85/108	654/115	PP

HOOK'S BEACON 56B
 TT FORWARD 668 F
 TT MS TUITION 668D
TT MS FORWARD 348L Reg #: -4203413
 WS BEEF MAKER R13
 TT MS BEEFMAKER 558C
 KR MS RODGE Z158

Another high performing female here. She indexed 115 within her group. Tallies top 25% growth numbers.

EPDs	%
CE	10.6
BW	1.1
WW	85.7
YW	127.2
ADG	0.26
MCE	6.9
Milk	29.1
MWW	71.8
YG	-0.39
Marb.	0.42
REA	1.11
API	151.5
TI	91.9

Lot **69** TT MS GUIDELINE 397L

BD	Color	%Sim	BW/Ratio	205/Ratio	P/S
1/10/2023	BR	PB SM	70/89	516/90	PP

CDI MAINLINE 265D
 HOOK'S GUIDE LINE 97G
 HOOK'S DACIA 14D
TT MS GUIDELINE 397L Reg #: -4203336
 RFS RED IRON T20
 TT MS REDIRON 457B
 TT MS GUN 957U

Here is a Guideline that will make a wonderful cow going forward. She is big and stout and will raise them stout.

EPDs	%
CE	9
BW	2.8
WW	72.5
YW	103.1
ADG	0.19
MCE	4.9
Milk	22.7
MWW	58.7
YG	-0.37
Marb.	0.05
REA	0.77
API	117.3
TI	71.3

LOT 69 • TT MS GUIDELINE 397L



LOT 70 • TT MS PRIDE 313L

Lot **70** **TT MS PRIDE 313L**

BD	Color	%Sim	BW/Ratio	205/Ratio	P/S
4/2/2023	BB	3/4 SM 1/4 AN	90/118	656/115	PP
KRJ HZN DIRECT IMPACT F805					
LBRS DAKOTA PRIDE J68					
LBR DAISY D68					
TT MS PRIDE 313L Reg #: -4203405					
HOOKS ADMIRAL 33A					
TT MS ADMIRAL 012H					
BTS MS ANSWER 201Z					

EPDs	%
CE	7.7 95
BW	3.6 95
WW	107.4 1
YW	167.2 1
ADG	0.37 4
MCE	5.2 80
Milk	25.9 35
MWW	79.4 2
YG	-0.29 30
Marb.	0.27 65
REA	1.36 1
API	130 55
TI	93.2 10

Here is a great way to end. Take a look at this powerhouse heifer. Big time numbers with top 1% growth. A big, long heifer with extra frame.

Lot **71** **5 commercial heifers**



GENETICS THAT PAY

\$20+
MORE PER
CARCASS

Success on the ranch is measured in dollars.

Data from the Tri-County Steer Carcass Futurity Cooperative finds packers pay **\$20 to \$34** more for SimAngus[®] and Simmental-sired cattle than English-sired counterparts.^a

Simmental influence also pays at auction. SimAngus-sired steer calves sold through Superior Livestock Auction earn more at sale time than all other calves.^b

It's no wonder the percentage of SimAngus calves marketed through the industry's largest video auction has grown **eightfold** since 2010.

STAND STRONG SIMMENTAL

406-587-4531 • simmental.org

^a Effect of sire breed group on carcass value of feedlot cattle harvested through Tri-County Steer Carcass Futurity Cooperative, Lewis, Iowa, 2002 to 2018. Odde, K. & King, M. (March 2021). Kansas State University, Relationships Among Sire-Breed Group, Calf Sex and Year Group on Carcass Traits. Breeds represented in the English-sired group: Angus, Red Angus, South Devon, Hereford and Shorthorn.
^b Effect of sire breed on sale price of beef steer calves sold through Superior Livestock Auction, summer 2020. Odde, K. & King, M. (December 2020). Kansas State University analysis of 394,900 head of beef calves. Estimating the Value of SimAngus-Sired Calves: Superior Livestock Auction - Summer Sales, 2020. For lots of 50 head or more.



TIME SENSITIVE MATERIAL. PLEASE DELIVER IMMEDIATELY

Tim & Tam CLark
199 18th St NW
Turtle Lake, ND 58575

15th Annual Production Sale
Feb. 17th 2024
At the Ranch, Turtle Lake, ND • 2 p.m. CST

Selling **43** Simmental & SimAngus™
Yearling Bulls
20 Open Heifers
& The *Elite 8* 4 Elite Breds
4 Elite Opens



LOT 2 • TT LAMBEAU 913L

